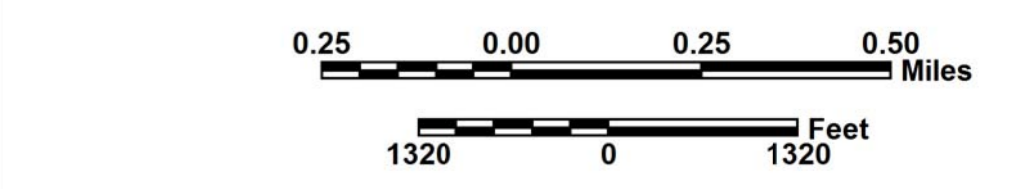


# TRAFFIC COUNT STATIONS TOWN OF BATESBURG-LEESVILLE

## LEXINGTON COUNTY

PREPARED BY THE  
**SOUTH CAROLINA DEPARTMENT OF TRANSPORTATION**  
IN COOPERATION WITH THE  
**U.S. DEPARTMENT OF TRANSPORTATION**  
**FEDERAL HIGHWAY ADMINISTRATION**

JUNE 2017



The South Carolina Department of Transportation makes no representations or warranties, implied or expressed, concerning the accuracy, completeness, reliability, or suitability, for any particular purpose of the information and data contained on this map or any information furnished in connection herewith.

For ordering information, please contact:  
**South Carolina Department of Transportation**  
Engineering Publications Sales Office  
955 Park Street - Room 122  
Columbia, SC 29201 (803) 737-4533  
E-mail: engrpubsales@scdot.org

For comments concerning this map, please contact:  
GIS/Mapping - (803) 737-3103



**ROAD SYSTEM**

INTERSTATE	.....	
U.S. ROUTE	.....	
S.C. ROUTE	.....	
SECONDARY ROUTE	.....	
EXIT NUMBER	.....	
INTERSTATE	.....	
MULTI-LANE HIGHWAY	.....	
TWO-LANE HIGHWAY	.....	
DIVIDED HIGHWAY OR ROAD	.....	
UNPAVED HIGHWAY	.....	
PAVED COUNTY	.....	
UNPAVED COUNTY	.....	
PRIVATE	.....	
RAILROAD	.....	
GENERAL HIGHWAY BRIDGE	.....	
BETWEEN 20' - 150'	.....	
BRIDGES OVER 150' ARE SHOWN AT ACTUAL SCALE	.....	

**BOUNDARY & HYDROGRAPHY**

NARROW STREAM	.....	
WIDE STREAM OR RIVER	.....	
RESERVOIR, POND OR LAKE	.....	
WETLAND OR MARSH	.....	
STATE LINE	.....	
COUNTY LINE	.....	
INCORPORATED AREA	.....	
EXTENT OF LARGE SCALE MAP	.....	
MILITARY INSTALLATIONS AND GOVERNMENT INSTITUTIONS	.....	
NATIONAL AND STATE FORESTS	.....	
STATE PARKS, AND NATIONAL WILDLIFE REFUGES	.....	

**MAP FEATURES**

PARK AND RIDE		HOSPITAL	
ARMORY		SCHOOL	
CHURCH		POINT OF INTEREST	
CEMETERY		COURTHOUSE	
CHURCH AND CEMETERY		WELCOME CENTER AND REST AREA	
AIRPORT COMPLETE FACILITIES		AIRPORT LIMITED FACILITIES	
SCDOT DISTRICT OFFICE / MAINTENANCE SHOP			

TRAFFIC COUNT STATION..... ▲  
TRAFFIC STATION NUMBER..... 111