

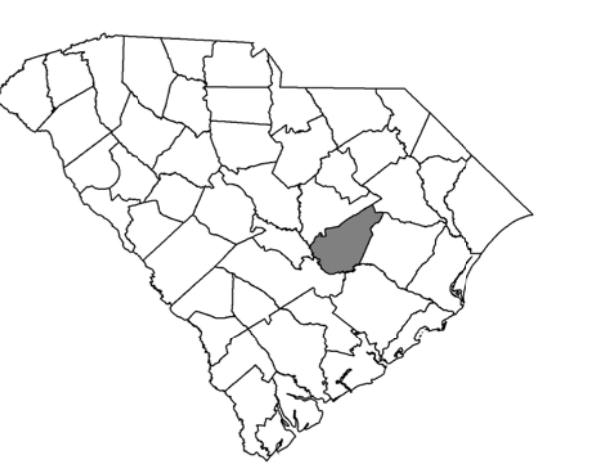
| STATE MAINTAINED ROAD NUMBER | |
|--|-------|
| INTERSTATES AA BB CC DD EE | |
| US HIGHWAYS 15 16 17 18 19 20 21 22 23 24 25 26 27 28 29 30 31 32 33 34 35 36 37 38 39 40 41 42 43 44 45 46 47 48 49 50 51 | |
| SECONDARY ROADS | |
| AS | AA BB |
| BA | BB CC |
| CA | CC DD |
| DA | DD EE |
| EA | EE FF |
| FA | FF GG |
| GA | GG HH |
| HA | HH II |
| IA | II JJ |
| JA | JJ KK |
| KA | KK LL |
| LA | LL MM |
| MA | MM NN |
| NA | NN OO |
| OA | OO PP |
| PA | PP QQ |
| QA | QQ RR |
| RA | RR SS |
| SA | SS TT |
| TA | TT UU |
| UA | UU VV |
| VA | VV WW |
| WA | WW XX |
| XA | XX YY |
| YA | YY ZZ |
| ZA | ZZ AA |



TRAFFIC COUNT STATIONS CLARENDON COUNTY South Carolina

PREPARED BY THE
SOUTH CAROLINA DEPARTMENT OF TRANSPORTATION
IN COOPERATION WITH THE
U.S. DEPARTMENT OF TRANSPORTATION
FEDERAL HIGHWAY ADMINISTRATION

January 2016



SIGNIFICANT FACTS
EST. 1855
NAMED FOR EDWARD HYDE, LORD OF CLARENDON
COUNTY POPULATION 2010 CENSUS 34,971
COUNTY AREA IN SQUARE MILES 601

For ordering information, please contact:
South Carolina Department of Transportation
Engineering Publications Sales Office
955 Park Street - Room 122 Columbia, SC 29201
(803) 737-4533
E-mail: engrpubsales@scdot.org

For comments concerning this map, please contact:
GIS/Mapping - (803) 737-3103

LEGEND

ROAD SYSTEM

- INTERSTATE: I-95, I-26
- U.S. ROUTE: US-101, US-17, US-78, US-90, US-101, US-17, US-78, US-90, US-101, US-17, US-78, US-90
- S.C. ROUTE: SC-12, SC-14, SC-16, SC-18, SC-20, SC-22, SC-24, SC-26, SC-28, SC-30, SC-32, SC-34, SC-36, SC-38, SC-40, SC-42, SC-44, SC-46, SC-48, SC-50, SC-52, SC-54, SC-56, SC-58, SC-60, SC-62, SC-64, SC-66, SC-68, SC-70, SC-72, SC-74, SC-76, SC-78, SC-80, SC-82, SC-84, SC-86, SC-88, SC-90, SC-92, SC-94, SC-96, SC-98, SC-100
- SECONDARY ROUTE: SR-1, SR-2, SR-3, SR-4, SR-5, SR-6, SR-7, SR-8, SR-9, SR-10, SR-11, SR-12, SR-13, SR-14, SR-15, SR-16, SR-17, SR-18, SR-19, SR-20, SR-21, SR-22, SR-23, SR-24, SR-25, SR-26, SR-27, SR-28, SR-29, SR-30, SR-31, SR-32, SR-33, SR-34, SR-35, SR-36, SR-37, SR-38, SR-39, SR-40, SR-41, SR-42, SR-43, SR-44, SR-45, SR-46, SR-47, SR-48, SR-49, SR-50, SR-51, SR-52, SR-53, SR-54, SR-55, SR-56, SR-57, SR-58, SR-59, SR-60, SR-61, SR-62, SR-63, SR-64, SR-65, SR-66, SR-67, SR-68, SR-69, SR-70, SR-71, SR-72, SR-73, SR-74, SR-75, SR-76, SR-77, SR-78, SR-79, SR-80, SR-81, SR-82, SR-83, SR-84, SR-85, SR-86, SR-87, SR-88, SR-89, SR-90, SR-91, SR-92, SR-93, SR-94, SR-95, SR-96, SR-97, SR-98, SR-99, SR-100
- PRIVATE: P-1, P-2, P-3, P-4, P-5, P-6, P-7, P-8, P-9, P-10, P-11, P-12, P-13, P-14, P-15, P-16, P-17, P-18, P-19, P-20, P-21, P-22, P-23, P-24, P-25, P-26, P-27, P-28, P-29, P-30, P-31, P-32, P-33, P-34, P-35, P-36, P-37, P-38, P-39, P-40, P-41, P-42, P-43, P-44, P-45, P-46, P-47, P-48, P-49, P-50, P-51, P-52, P-53, P-54, P-55, P-56, P-57, P-58, P-59, P-60, P-61, P-62, P-63, P-64, P-65, P-66, P-67, P-68, P-69, P-70, P-71, P-72, P-73, P-74, P-75, P-76, P-77, P-78, P-79, P-80, P-81, P-82, P-83, P-84, P-85, P-86, P-87, P-88, P-89, P-90, P-91, P-92, P-93, P-94, P-95, P-96, P-97, P-98, P-99, P-100

BOUNDARIES

- STATE LINE: ---
- COUNTY LINE: - - -
- MUNICIPALITY: [Symbol]
- INCORPORATED AREA: [Symbol]
- EXTENT OF LARGE SCALE MAP: [Symbol]
- MILITARY RESERVATIONS AND GOVERNMENT RESERVATIONS: [Symbol]
- NATIONAL AND STATE FORESTS: [Symbol]
- STATE FOREST AND NATIONAL WILDLIFE REFUGES: [Symbol]

HYDROGRAPHY

- MAJOR STREAM: [Symbol]
- WIDE STREAM OR RIVER: [Symbol]
- RESERVOIR, POND OR LAKE: [Symbol]
- WETLAND OR MARSH: [Symbol]

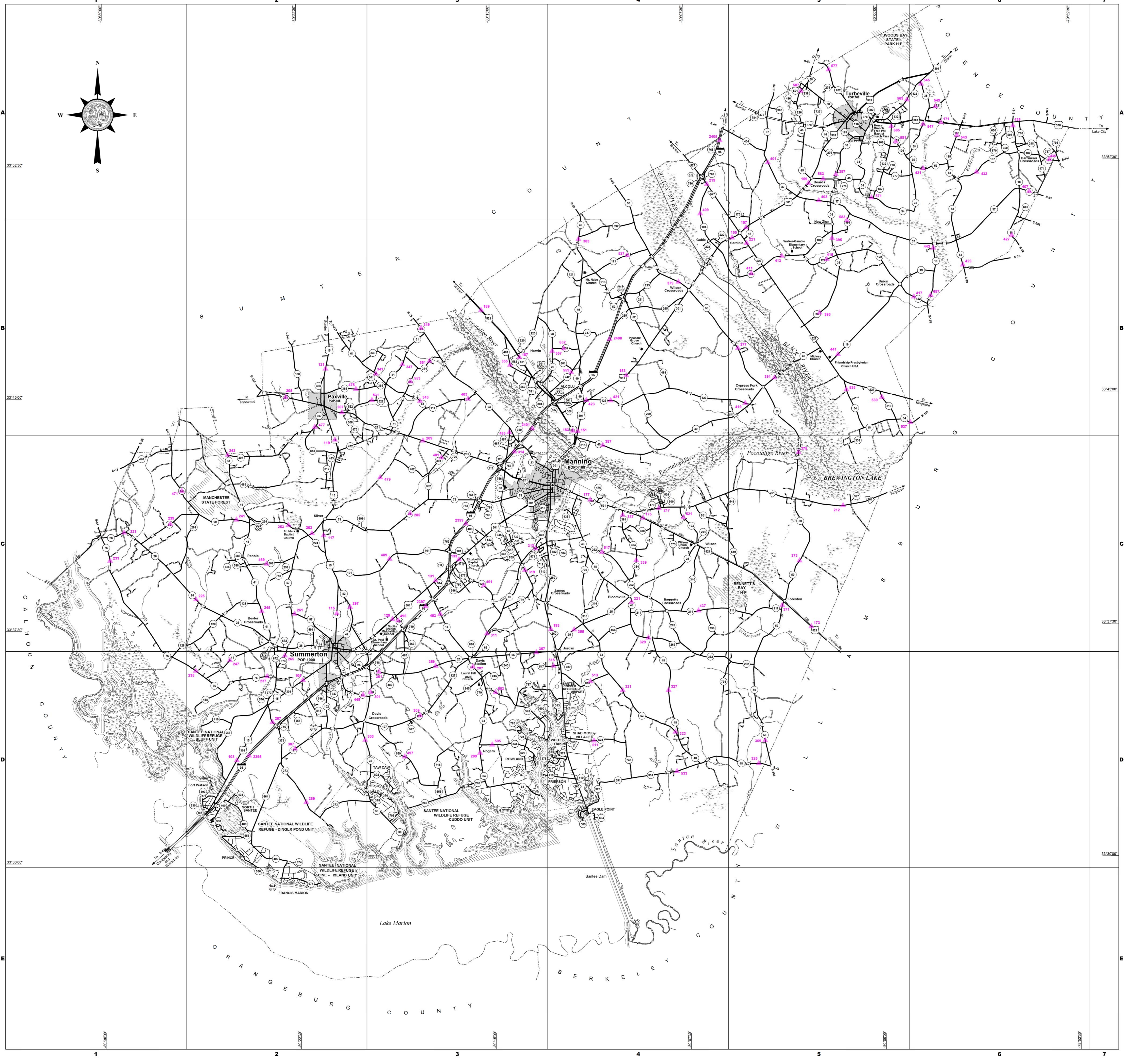
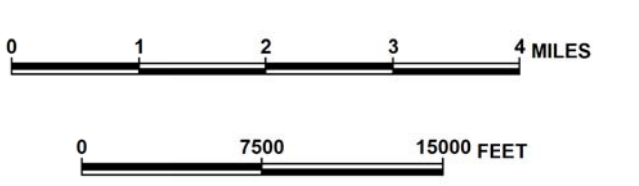
CITIES AND TOWNS

- STATE CAPITAL: [Symbol]
- COUNTY SEAT: [Symbol]
- OTHER CITY OR LOCALITY: [Symbol]

MAP FEATURES

- CHURCH: [Symbol]
- ADULTERY: [Symbol]
- CONVENTIONAL INSTITUTION: [Symbol]
- COURT AND COUNTY: [Symbol]
- COURTHOUSE: [Symbol]
- AIRPORT COMPLETE FACILITIES: [Symbol]
- AIRPORT LIMITED FACILITIES: [Symbol]
- STADIUM (BASEBALL STADIUM): [Symbol]
- MAINTENANCE SHOP: [Symbol]
- GENERAL HIGHWAY BRIDGE: [Symbol]
- OTHER TYPE OF BRIDGE (SHOW ACTUAL LENGTH): [Symbol]
- HOSPITAL: [Symbol]
- SCHOOL: [Symbol]
- POINT OF INTEREST: [Symbol]
- CEMETERY: [Symbol]
- WILDLIFE CENTER: [Symbol]
- WILDLIFE CENTER (WETLAND AREA): [Symbol]
- AIRPORT LIMITED FACILITIES: [Symbol]

TRAFFIC COUNT STATIONS
TRAFFIC STATION NUMBER: [Symbol]



The South Carolina Department of Transportation makes no representations or warranties, implied or expressed, concerning the accuracy, completeness, reliability, or suitability, for any particular purpose of the information and data contained on this map or any information furnished in connection herewith.