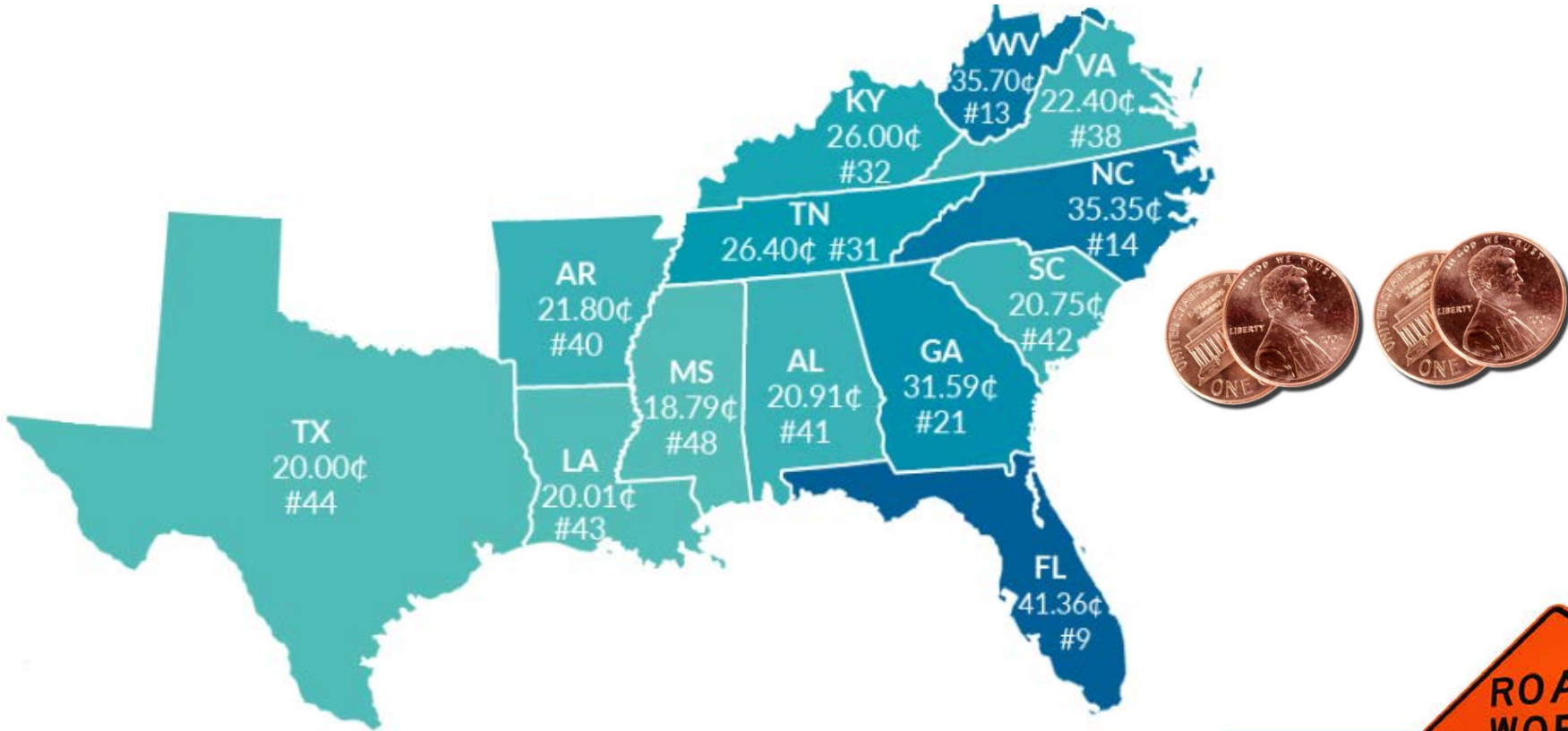




# State of SCDOT

## Feb 2019

# Year 2 of the Phased-in 12¢ Gas Tax Increase





# Infrastructure Maintenance Trust Fund (IMTF)



New Roads Bill Revenues



CTC's Share of the Increase



"Old Money" Swept In

**\$506M Deposited since July 1, 2017**

# How is the Trust Fund being utilized?



# Infrastructure Maintenance Trust Fund (IMTF)

Rural Road Safety, Pavements,  
Bridges, Interstate Widening

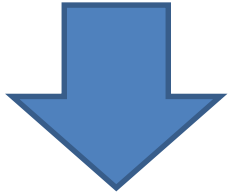
CTC's Share

Tax Credit Transfer to DOR

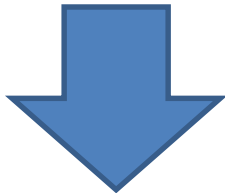


# Infrastructure Maintenance Trust Fund (IMTF)

**\$914 Million Committed**  
to Road and Bridge Projects



**\$764M** in Rural Road  
Safety, Paving, Bridges and  
Interstate Work under  
Construction



**\$150M** in Rural  
Road Safety and Bridges  
in Development





# *Contractors are Paid as the Work is Completed*



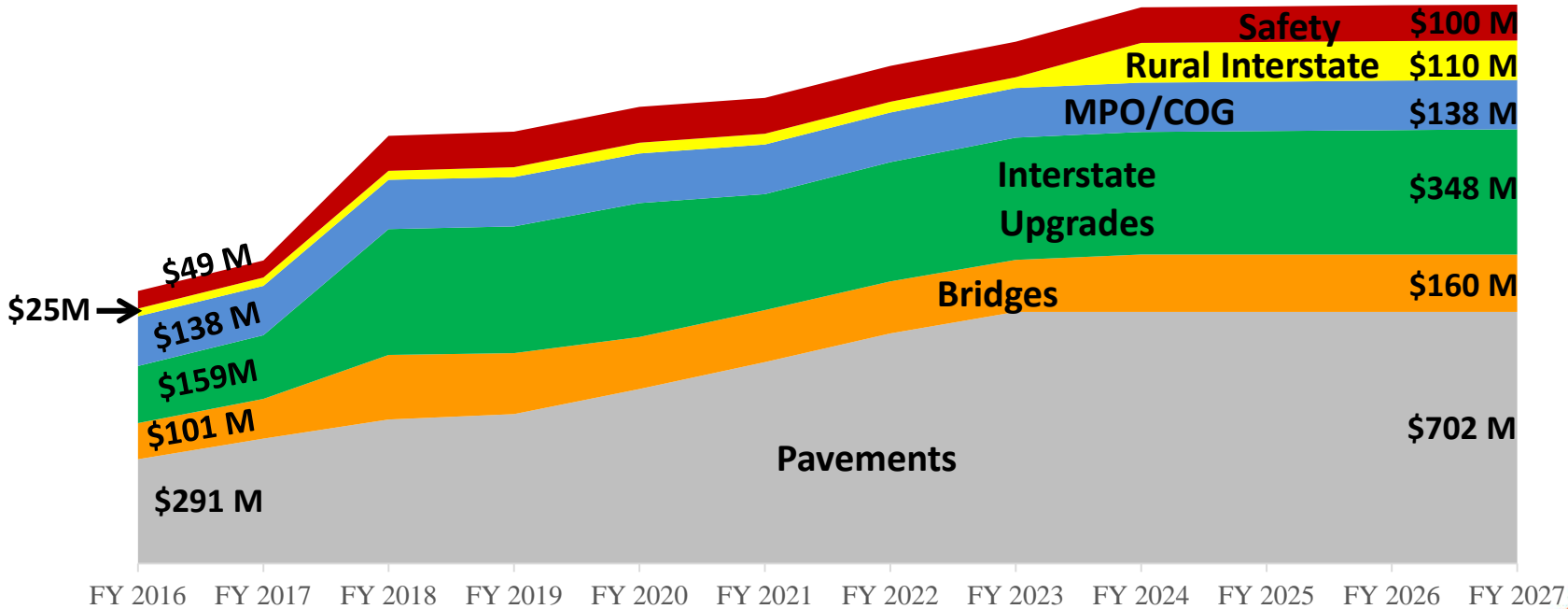
**\$98 Million Paid Out since July 1, 2017**



***The 10-Year Plan banks on the  
Infrastructure Maintenance Trust Fund,  
Federal Funds and other state funds dedicated  
to SCDOT***



# The 10-Year Plan Investment Areas



**Federal & State Funds Combined**



# 10-Year Plan Priorities

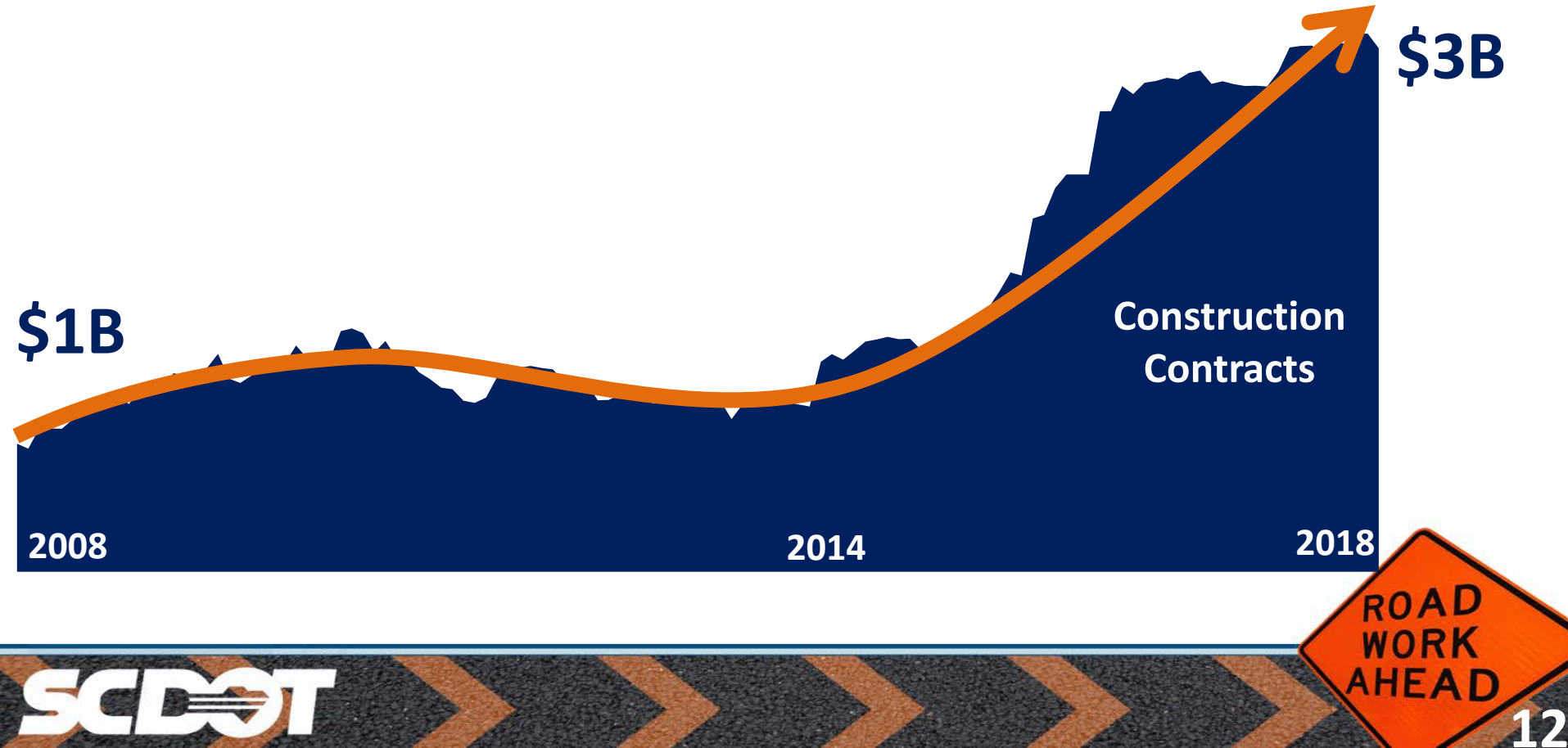


# Projects Under Construction: Year 1

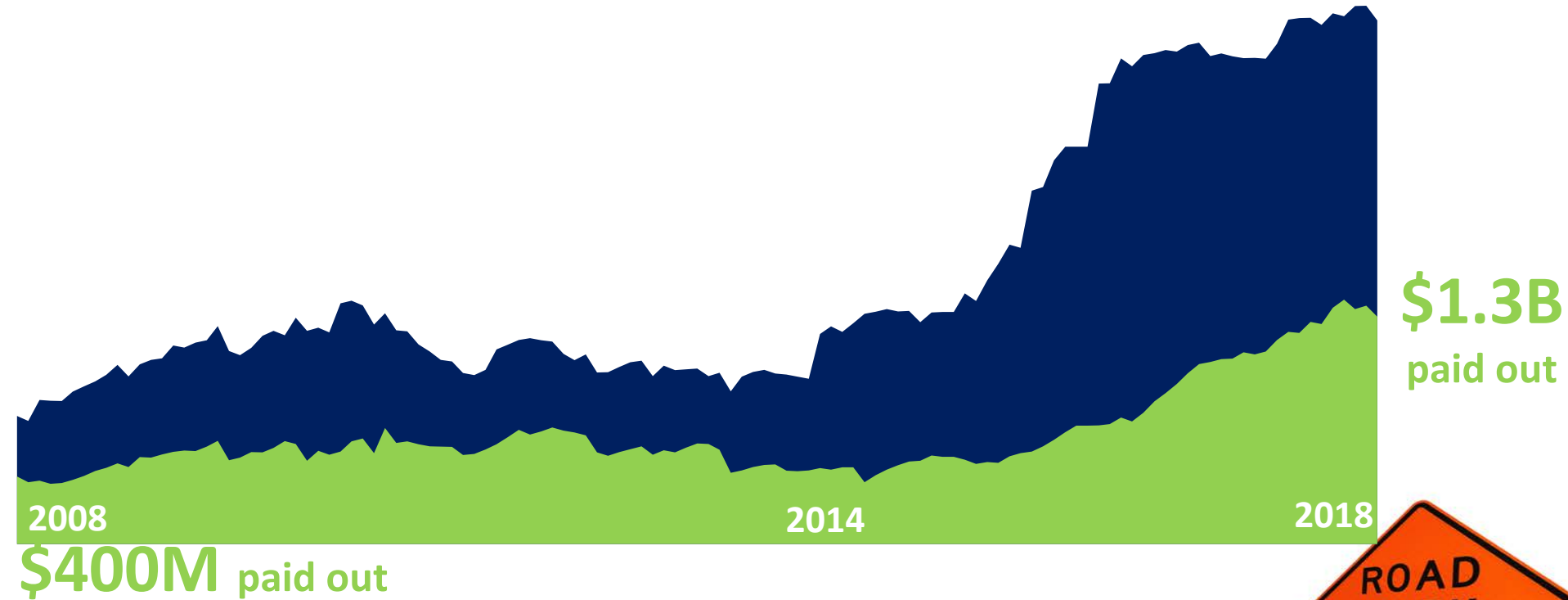




# A Historic Level of Roadwork is Underway



# Our industry partners have responded



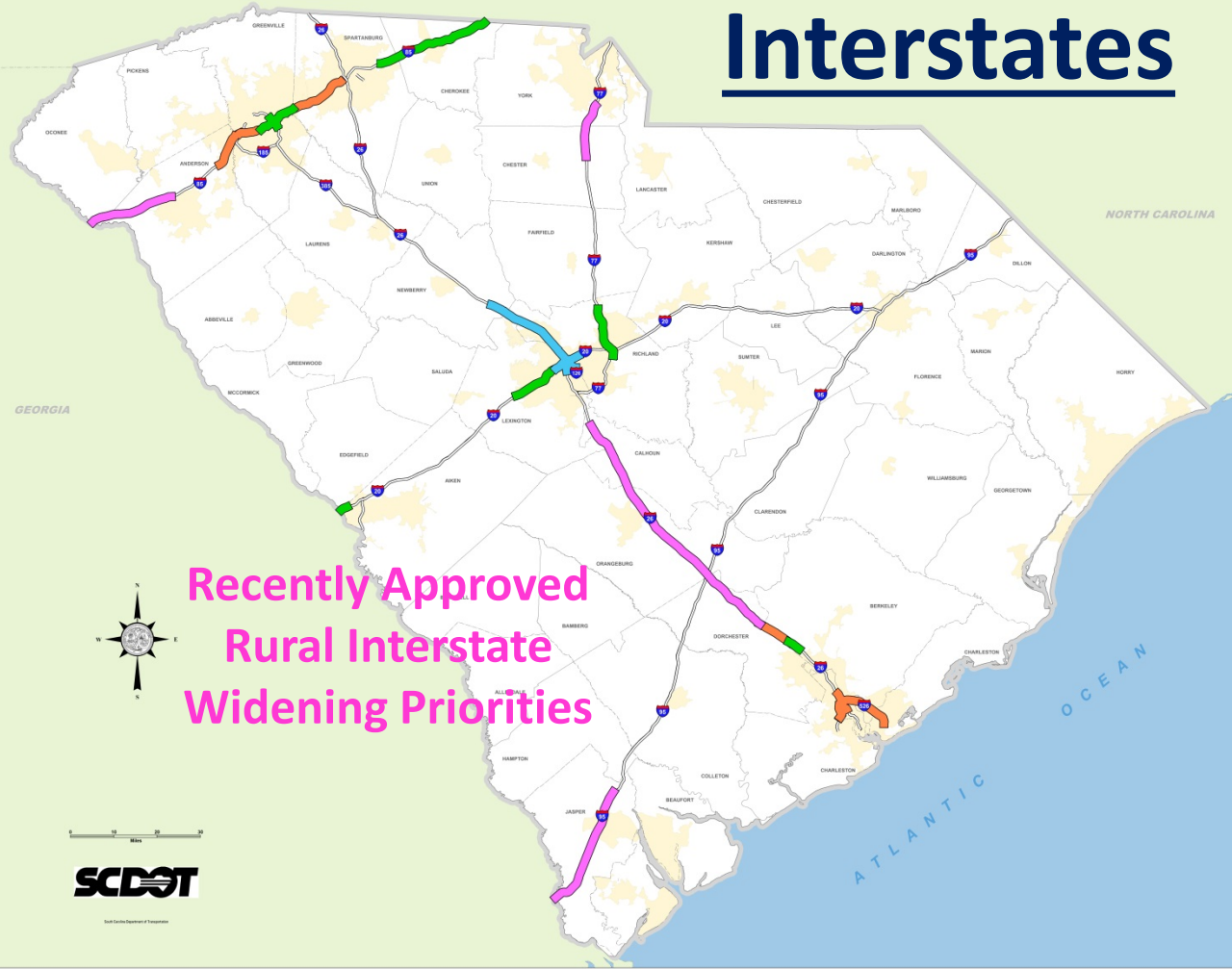
# Interstates

≈\$1 Billion is under Construction

Another ≈ \$2 Billion expected to go to contract in the next 12-18 months

> \$3 Billion in Development

Recently Approved  
Rural Interstate  
Widening Priorities



ROAD  
WORK  
AHEAD



Continuous  
improvement  
is better than  
delayed  
perfection.

Mark Twain

# Your Complete Resource for South Carolina's Transportation System

[www.scdot.org](http://www.scdot.org)



## SCDOT's Pothole Blitz

SCDOT is launching a "Pothole Blitz" across the state by focusing our Maintenance crews on repairing potholes across the state for the next several weeks.

[Details](#)



## Road Conditions at a Glance

View traffic cameras and get up to date traffic information with our 511 site.

[Go to 511 >](#)



## Public Involvement Portal

A new way to find project information. Discover what projects and improvements SCDOT is making in your area.

[Public Involvement Portal >](#)



## Infrastructure Maintenance Trust Fund

The Infrastructure Maintenance Trust Fund (IMTF) account balance is \$407,362,552.94 as of December 31, 2018. For a list of projects funded by the IMTF, and details on the account, visit our [trust fund page](#).

[Trust Fund Page >](#)



# Looking Ahead



**Renewal of the Federal Program**

**How do we deal with the growth  
and congestion needs of the  
state?**





**LET 'EM WORK,  
LET 'EM LIVE**

**ROAD  
WORK  
AHEAD**