

# Potential Corridors

Conceptual

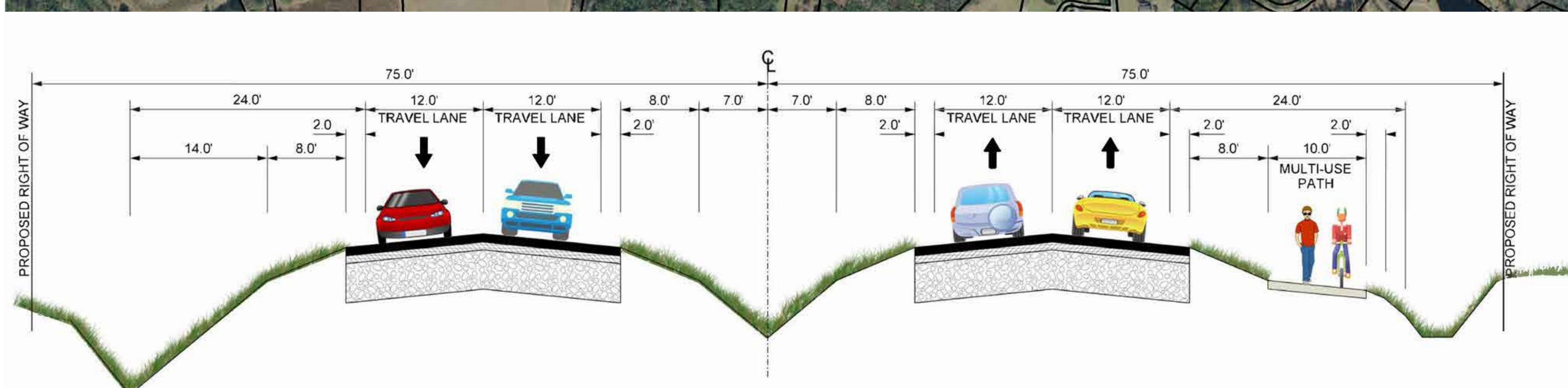
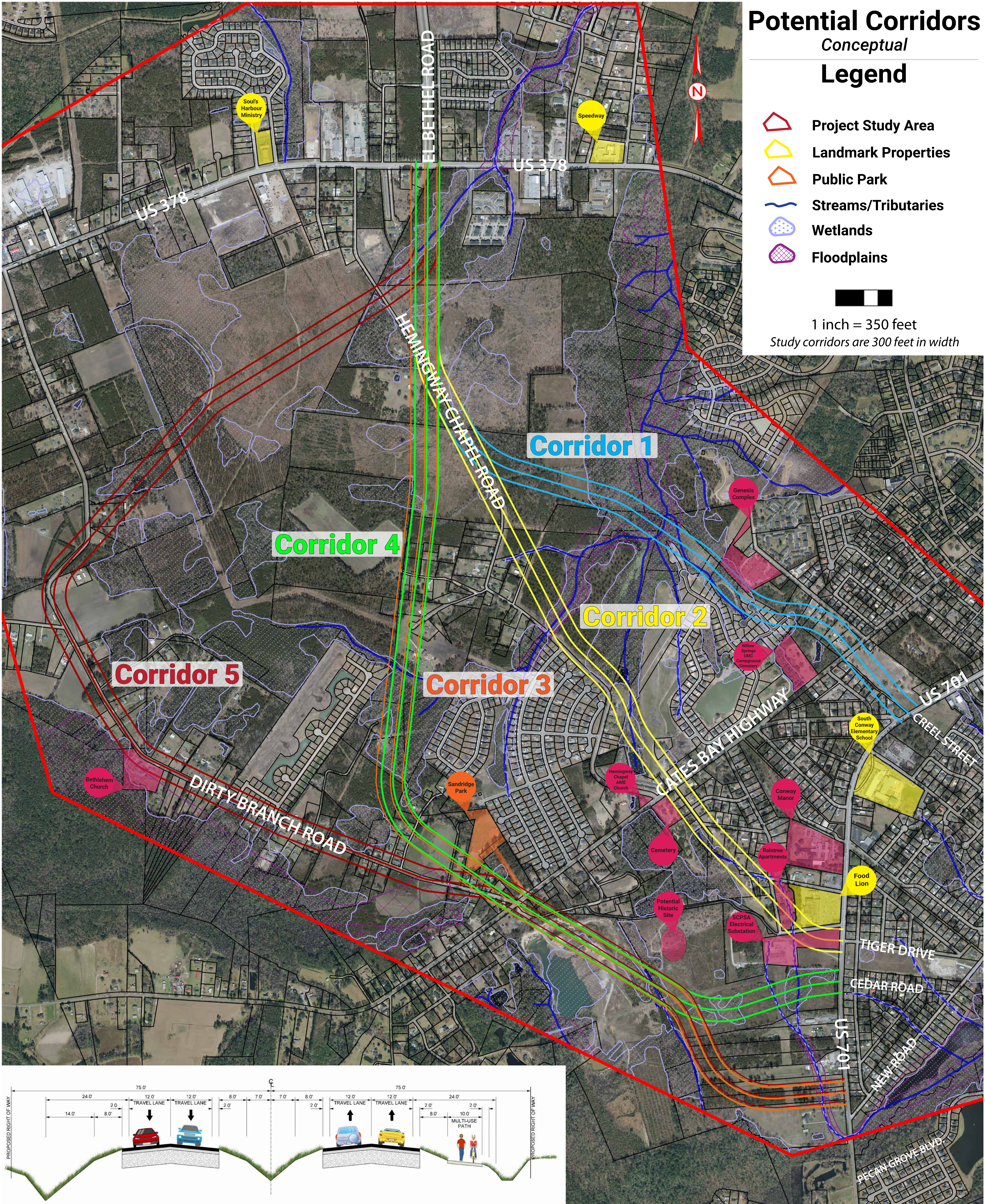
## Legend

-  Project Study Area
-  Landmark Properties
-  Public Park
-  Streams/Tributaries
-  Wetlands
-  Floodplains



1 inch = 350 feet

Study corridors are 300 feet in width



SCDOT

Mead&Hunt

Horry County  
SOUTH CAROLINA

RIDE3

Conway Perimeter Road Phase II  
(El Bethel Road Extension)