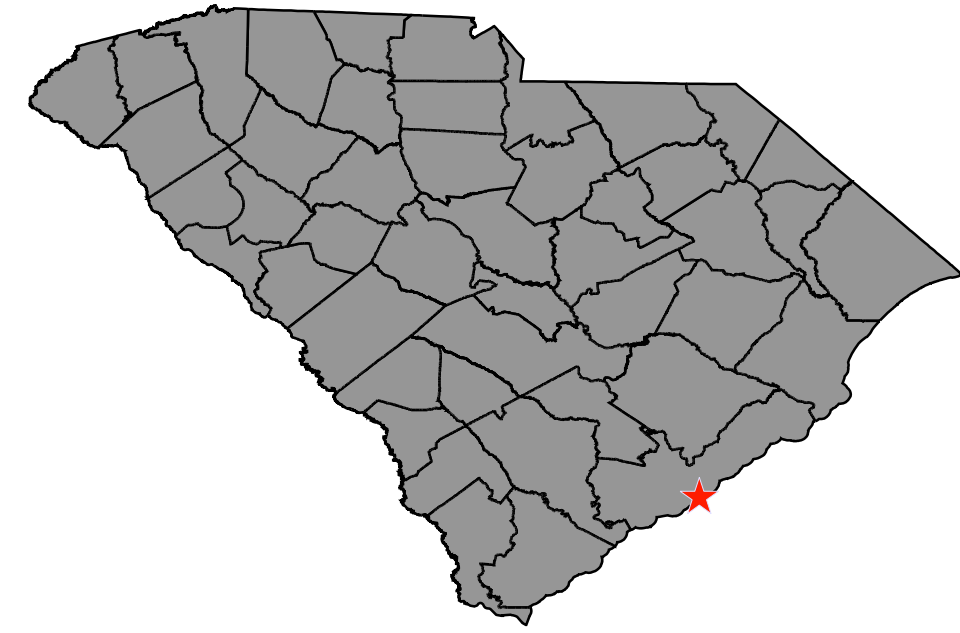


# CONCEPTUAL BIKE AND PEDESTRIAN SAFETY IMPROVEMENTS

S-107 (MEETING STREET), S-104 (KING STREET), AND S-106 (SAINT PHILIP STREET)

## Project Location CHARLESTON COUNTY



## Map Legend

-  **ROADWAY PAVEMENT**
-  **PROPOSED CONCRETE**
-  **PROPOSED SIDEWALK**
-  **EXISTING RIGHT OF WAY**
-  **EXISTING PROPERTY LINE**
-  **PROPOSED RECTANGULAR RAPID-FLASHING BEACON (RRFB)**
-  **PROPOSED BIKE MARKINGS**
-  **PROPOSED DETECTABLE WARNING SURFACE**
-  **EXISTING SIGNAL**

IMPROVEMENTS THROUGHOUT CORRIDOR INCLUDE:

- LEADING PEDESTRIAN INTERVALS TO PRIORITIZE PEDESTRIANS ENTERING THE INTERSECTION AND REDUCE CONFLICTS
- RETRO REFLECTIVE BACK PLATES TO IMPROVE SIGNAL HEAD VISIBILITY AND REDUCE SUN GLARE
- REPLACE 8" SIGNAL HEADS WITH 12" SIGNAL HEADS
- REPLACE EXISTING DROP INLET GRATES WITH BICYCLE FRIENDLY ONES
- UPGRADE PAVEMENT MARKINGS AND RAISED PAVEMENT MARKERS
- INSTALL UNIFORM STREET LIGHTING (CALHOUN ST. AND ST. PHILLIPS ST)

SCALE IN FEET  
0 100 200 400

## Contact Information

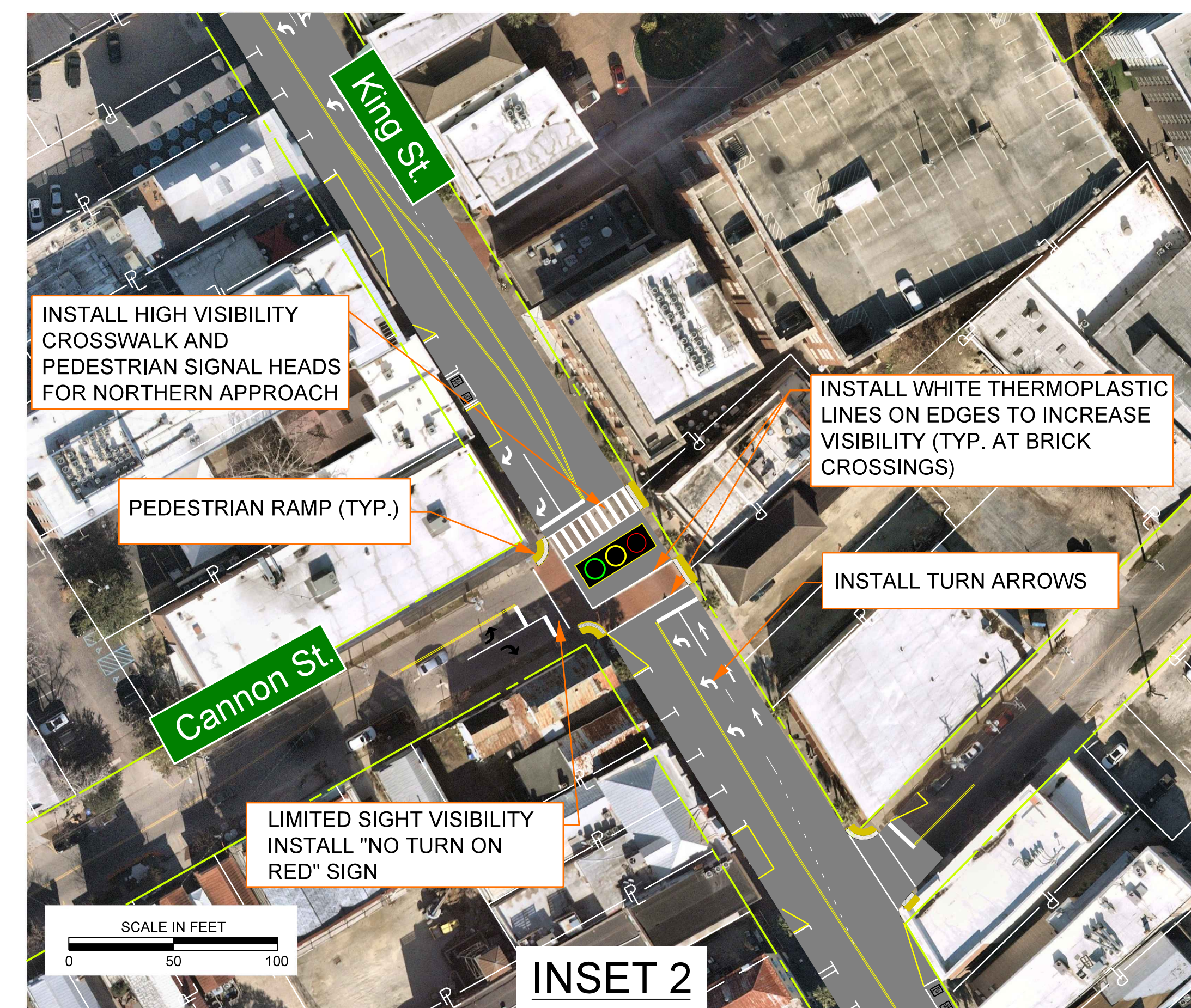
South Carolina Dept. of Transportation  
955 Park Street  
Columbia SC 29201

Questions/comments may be sent to:  
Kaylon Meetze, SCDOT Safety Projects Manager  
Phone: 803-737-2638  
Email: MeetzeKR@scdot.org

Project Website:  
<https://scdotgis.online/>

## Disclaimer

These displays are meant to show concepts for planning purposes only and are subject to change.

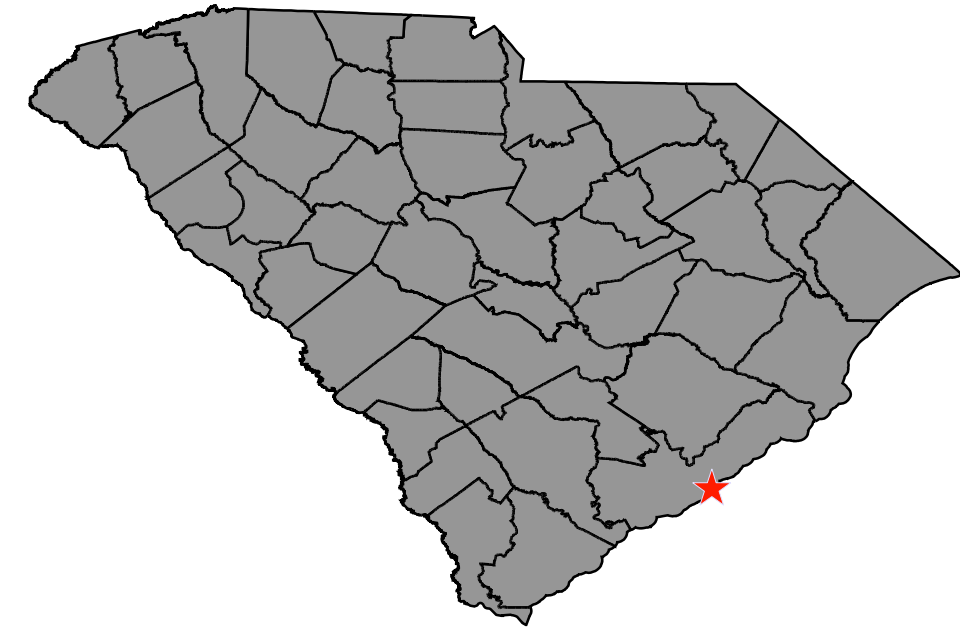




# CONCEPTUAL BIKE AND PEDESTRIAN SAFETY IMPROVEMENTS

S-107 (MEETING STREET), S-104 (KING STREET), AND S-106 (SAINT PHILIP STREET)

## Project Location CHARLESTON COUNTY

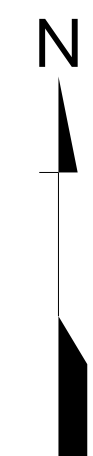


## Map Legend

- ROADWAY PAVEMENT**
- PROPOSED CONCRETE**
- PROPOSED SIDEWALK**
- EXISTING RIGHT OF WAY**
- EXISTING PROPERTY LINE**
- PROPOSED RECTANGULAR RAPID-FLASHING BEACON (RRFB)**
- PROPOSED BIKE MARKINGS**
- PROPOSED DETECTABLE WARNING SURFACE**
- EXISTING SIGNAL**

IMPROVEMENTS AT EACH TRAFFIC SIGNAL INCLUDE:  
 -LEADING PEDESTRIAN INTERVALS TO PRIORITIZE PEDESTRIANS ENTERING THE INTERSECTION AND REDUCE CONFLICTS  
 -RETROREFLECTIVE BACKPLATES TO IMPROVE SIGNAL HEAD VISIBILITY AND REDUCE SUN GLARE  
 -FLASHING YELLOW ARROW SIGNAL HEADS TO IMPROVE SAFETY DURING PERMISSIVE LEFT-TURNS  
 -ADDITIONAL SIGNAGE SUCH AS STREET NAMES AND YIELD TO PEDESTRIANS

SCALE IN FEET  
 0 100 200 400



## Contact Information

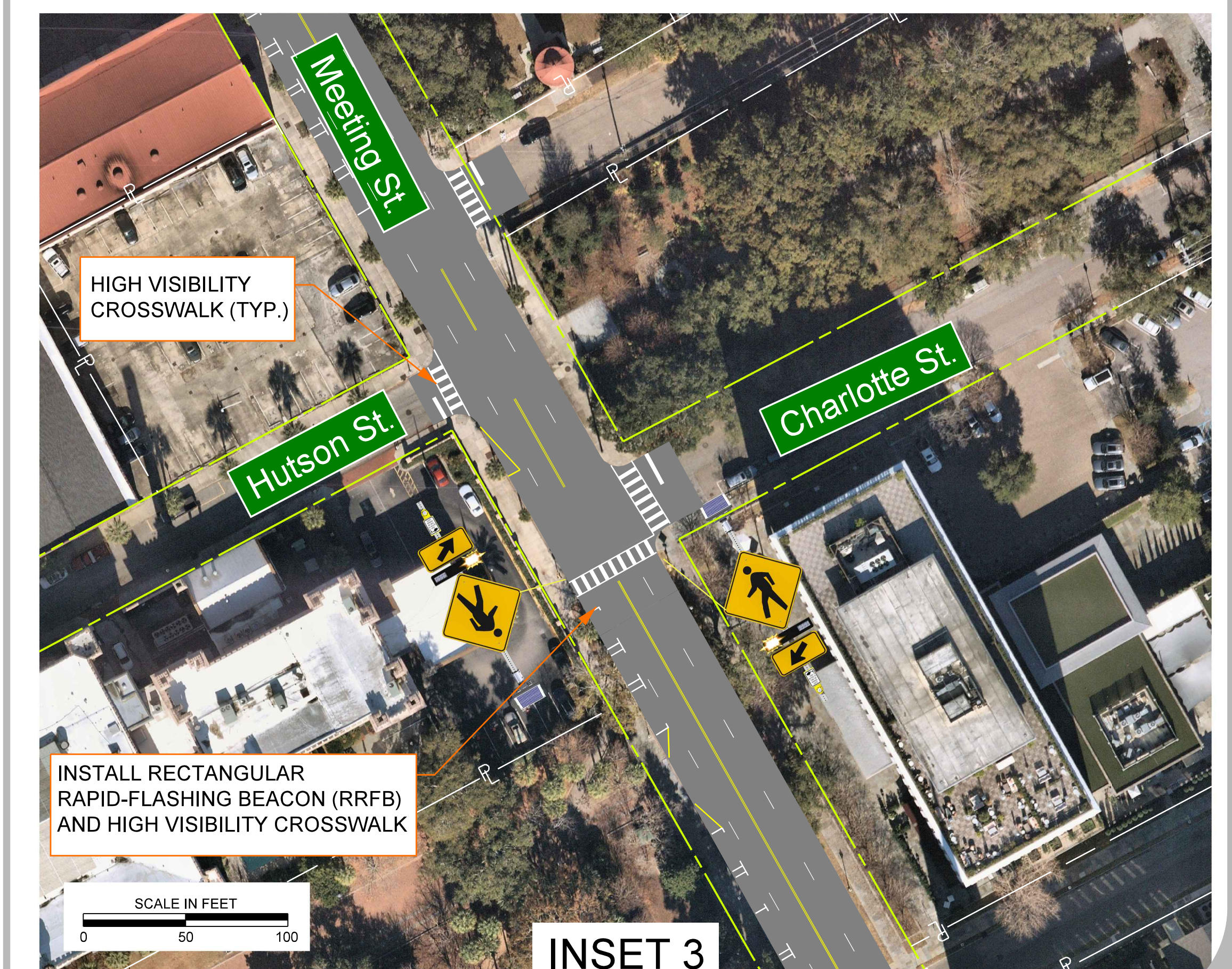
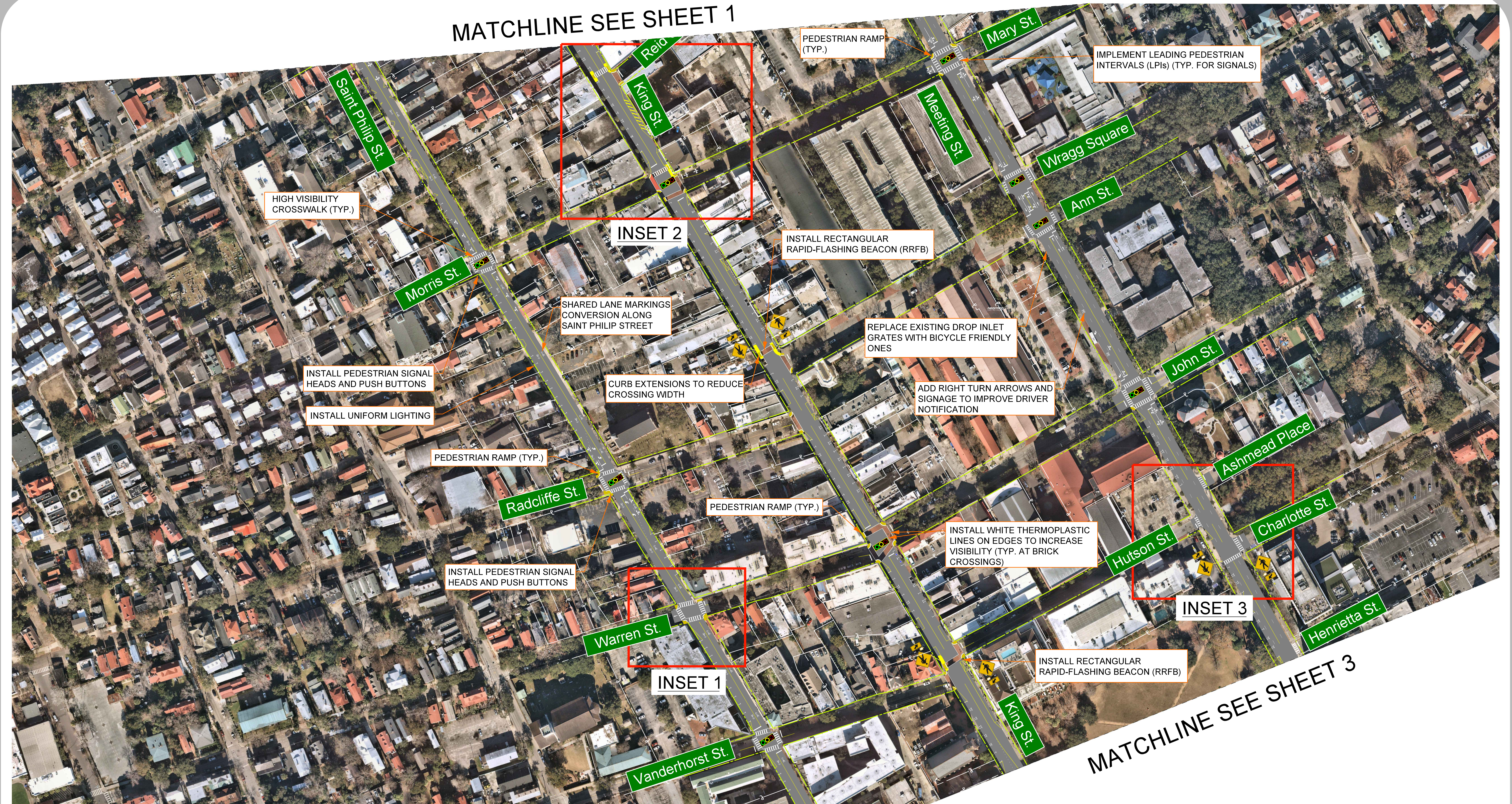
South Carolina Dept. of Transportation  
 955 Park Street  
 Columbia SC 29201

Questions/comments may be sent to:  
 Kaylon Meetze, SCDOT Safety Projects Manager  
 Phone: 803-737-2638  
 Email: MeetzeKR@scdot.org

Project Website:  
<https://scdotgis.online/>

## Disclaimer

These displays are meant to show concepts for planning purposes only and are subject to change.

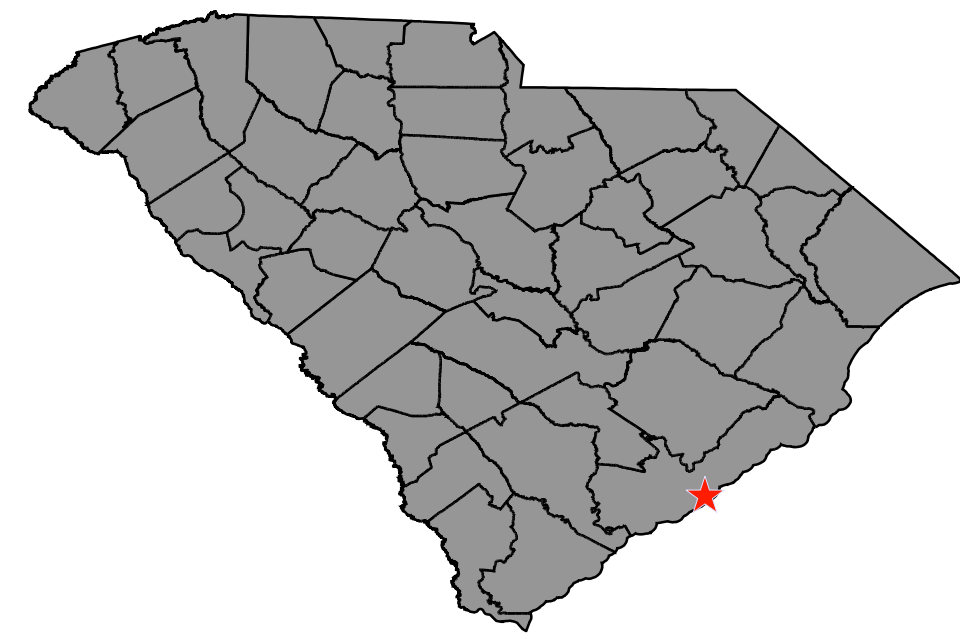




# CONCEPTUAL BIKE AND PEDESTRIAN SAFETY IMPROVEMENTS

S-107 (MEETING STREET), S-104 (KING STREET),  
S-106 (SAINT PHILIP STREET) AND S-404 (CALHOUN STREET)

Project Location  
CHARLESTON COUNTY



## Map Legend

-  ROADWAY PAVEMENT
-  PROPOSED CONCRETE
-  PROPOSED SIDEWALK
-  EXISTING RIGHT OF WAY
-  EXISTING PROPERTY LINE
-  PROPOSED RECTANGULAR RAPID-FLASHING BEACON (RRFB)
-  PROPOSED BIKE MARKINGS
-  PROPOSED DETECTABLE WARNING SURFACE
-  EXISTING SIGNAL

IMPROVEMENTS AT EACH TRAFFIC SIGNAL INCLUDE:  
-LEADING PEDESTRIAN INTERVALS TO PRIORITIZE PEDESTRIANS ENTERING THE INTERSECTION AND REDUCE CONFLICTS  
-RETROREFLECTIVE BACKPLATES TO IMPROVE SIGNAL HEAD VISIBILITY AND REDUCE SUN GLARE  
-FLASHING YELLOW ARROW SIGNAL HEADS TO IMPROVE SAFETY DURING PERMISSIVE LEFT-TURNS  
-ADDITIONAL SIGNAGE SUCH AS STREET NAMES AND YIELD TO PEDESTRIANS

SCALE IN FEET  
0 100 200 400



## Contact Information

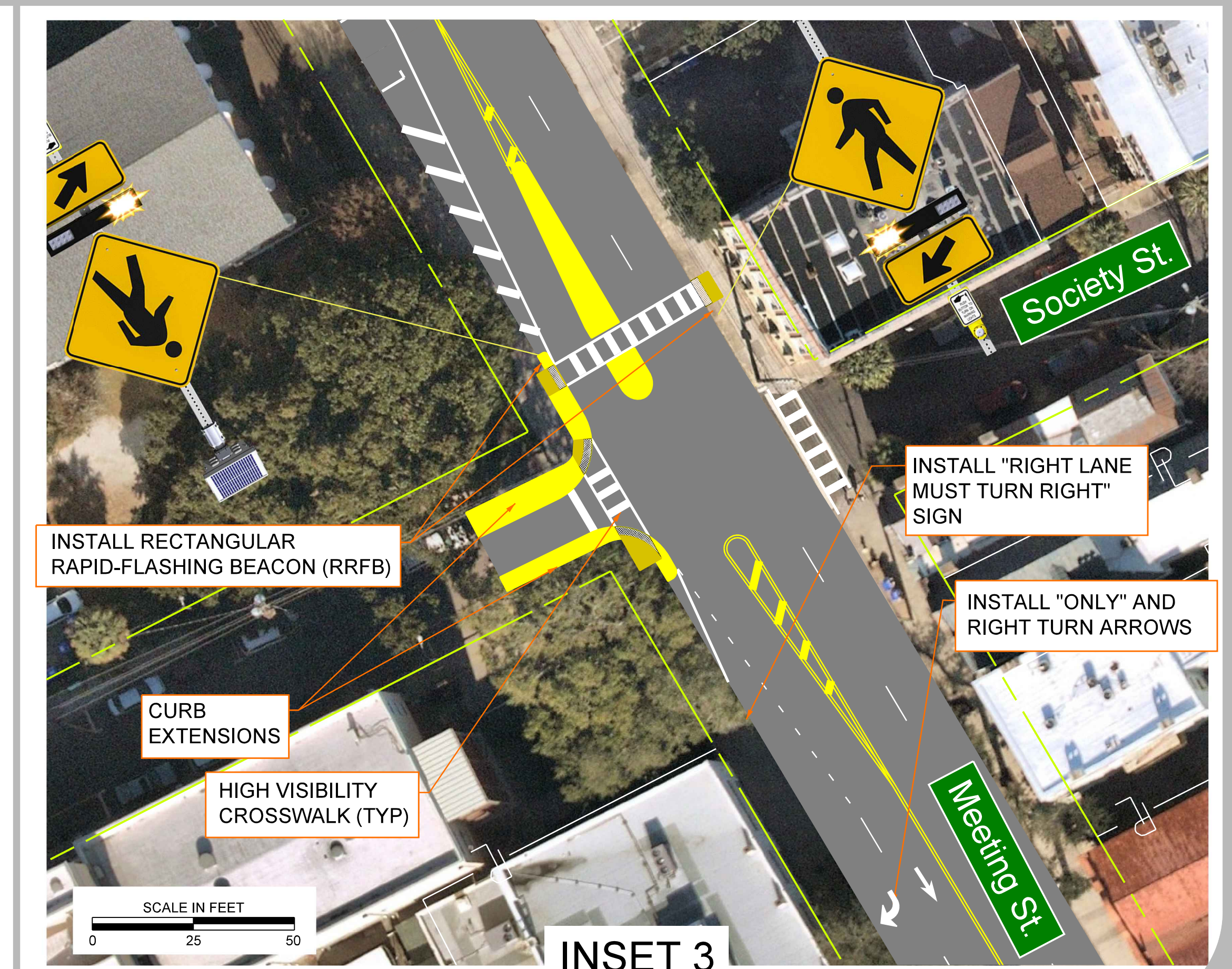
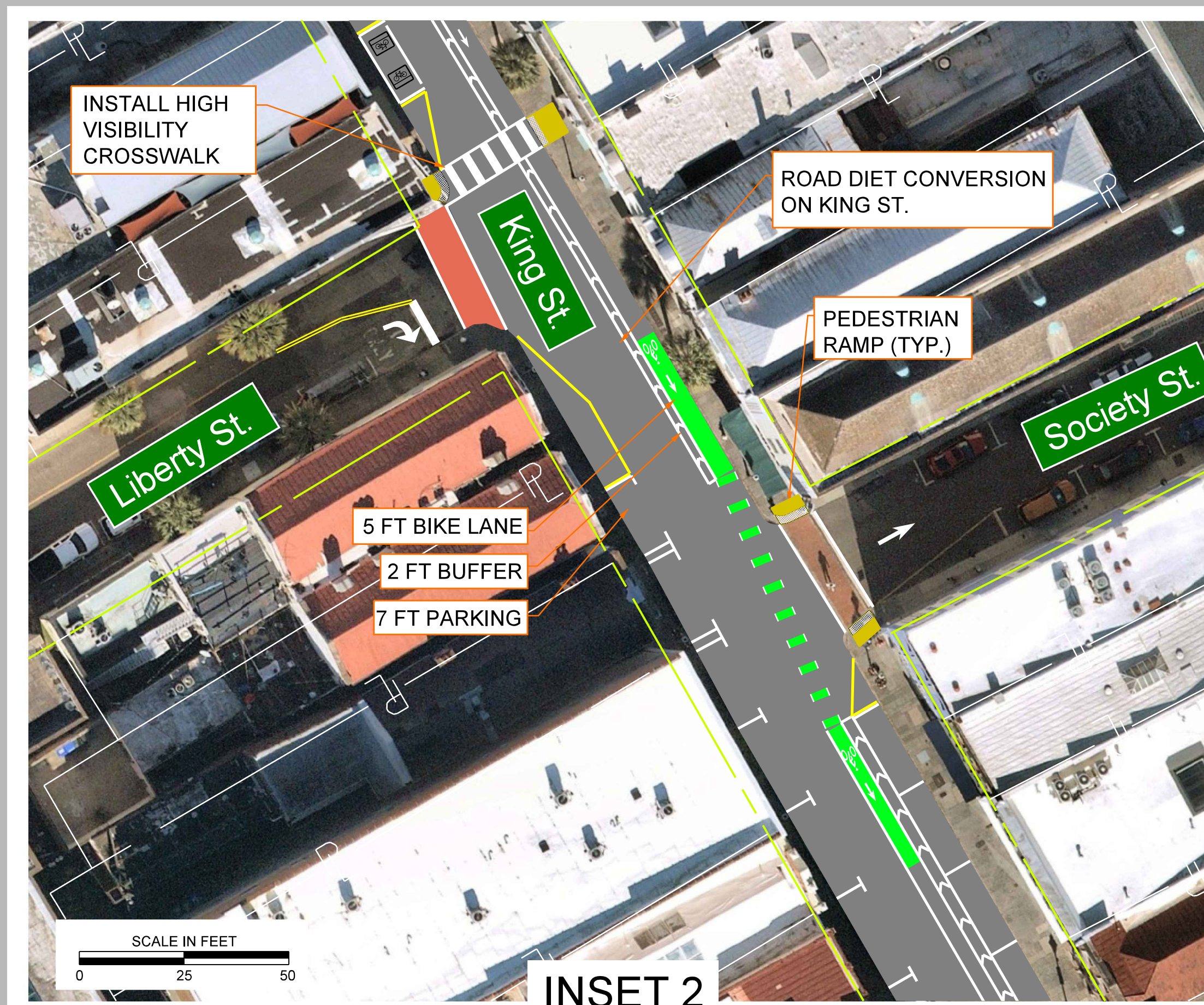
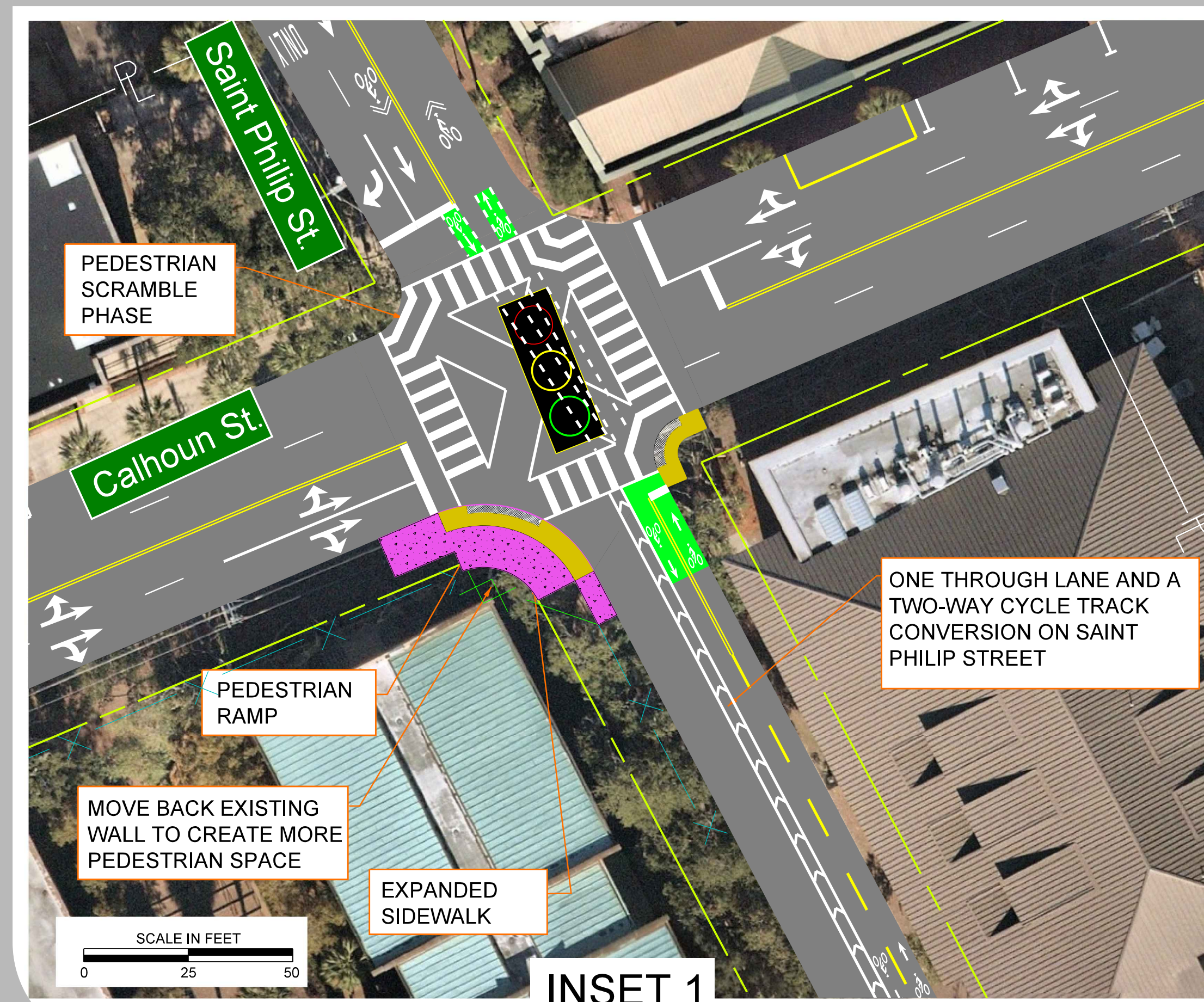
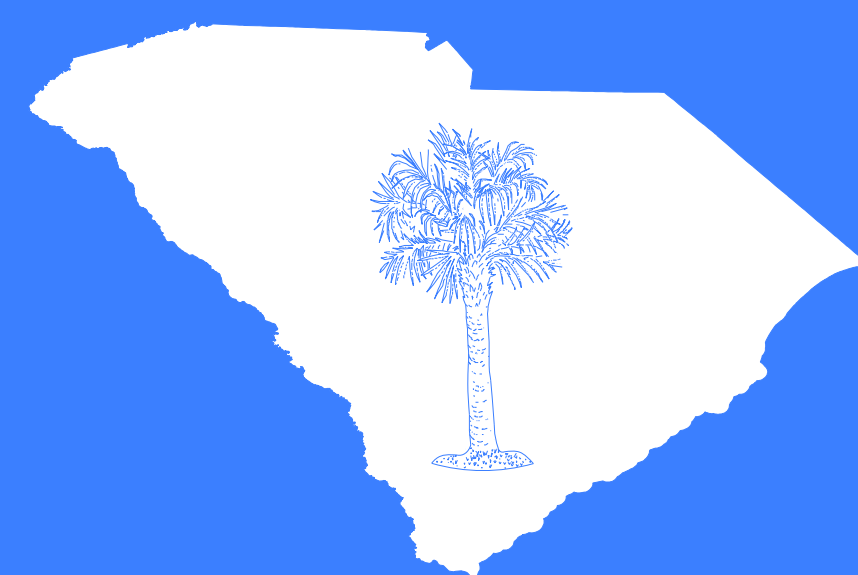
South Carolina Dept. of Transportation  
955 Park Street  
Columbia SC 29201

Questions/comments may be sent to:  
Kaylon Meetze, SCDOT Safety Projects Manager  
Phone: 803-737-2638  
Email: MeetzeKR@scdot.org

Project Website:  
<https://scdotgis.online/>

## Disclaimer

These displays are meant to show concepts for planning purposes only and are subject to change.

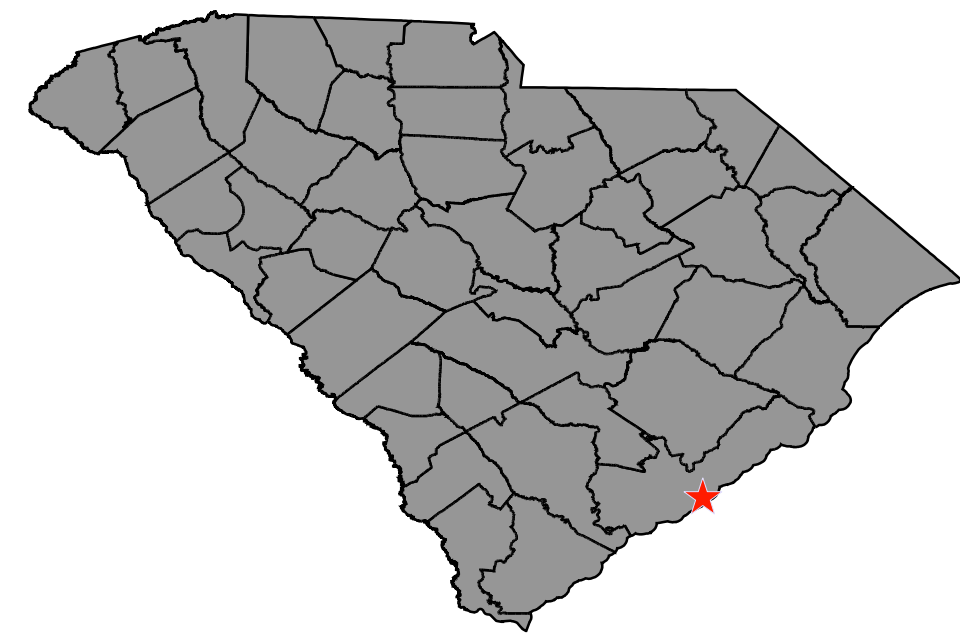




# CONCEPTUAL BIKE AND PEDESTRIAN SAFETY IMPROVEMENTS

S-107 (MEETING STREET) AND S-104 (KING STREET)

## Project Location CHARLESTON COUNTY



## Map Legend

-  **ROADWAY PAVEMENT**
-  **PROPOSED CONCRETE**
-  **PROPOSED SIDEWALK**
-  **EXISTING RIGHT OF WAY**
-  **EXISTING PROPERTY LINE**
-  **PROPOSED RECTANGULAR RAPID-FLASHING BEACON (RRFB)**
-  **PROPOSED BIKE MARKINGS**
-  **PROPOSED DETECTABLE WARNING SURFACE**
-  **EXISTING SIGNAL**

IMPROVEMENTS AT EACH TRAFFIC SIGNAL INCLUDE:  
 -LEADING PEDESTRIAN INTERVALS TO PRIORITIZE PEDESTRIANS ENTERING THE INTERSECTION AND REDUCE CONFLICTS  
 -RETROREFLECTIVE BACKPLATES TO IMPROVE SIGNAL HEAD VISIBILITY AND REDUCE SUN GLARE  
 -FLASHING YELLOW ARROW SIGNAL HEADS TO IMPROVE SAFETY DURING PERMISSIVE LEFT-TURNS  
 -ADDITIONAL SIGNAGE SUCH AS STREET NAMES AND YIELD TO PEDESTRIANS

SCALE IN FEET  
 0 100 200 400

## Contact Information

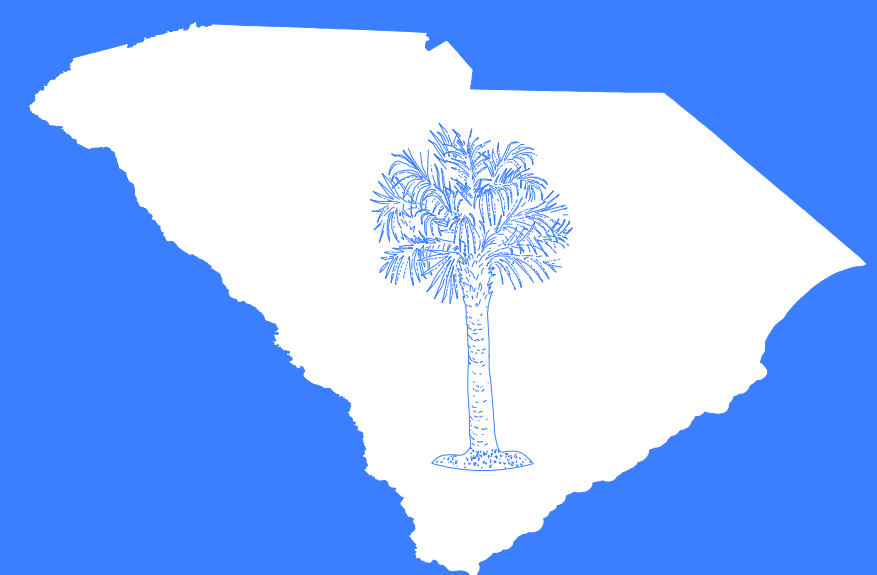
South Carolina Dept. of Transportation  
 955 Park Street  
 Columbia SC 29201

Questions/comments may be sent to:  
 Kaylon Meetze, SCDOT Safety Projects Manager  
 Phone: 803-737-2638  
 Email: MeetzeKR@scdot.org

Project Website:  
<https://scdotgis.online/>

## Disclaimer

These displays are meant to show concepts for planning purposes only and are subject to change.



SCALE IN FEET  
 0 50 100  
 INSET 1



SCALE IN FEET  
 0 50 100  
 INSET 2

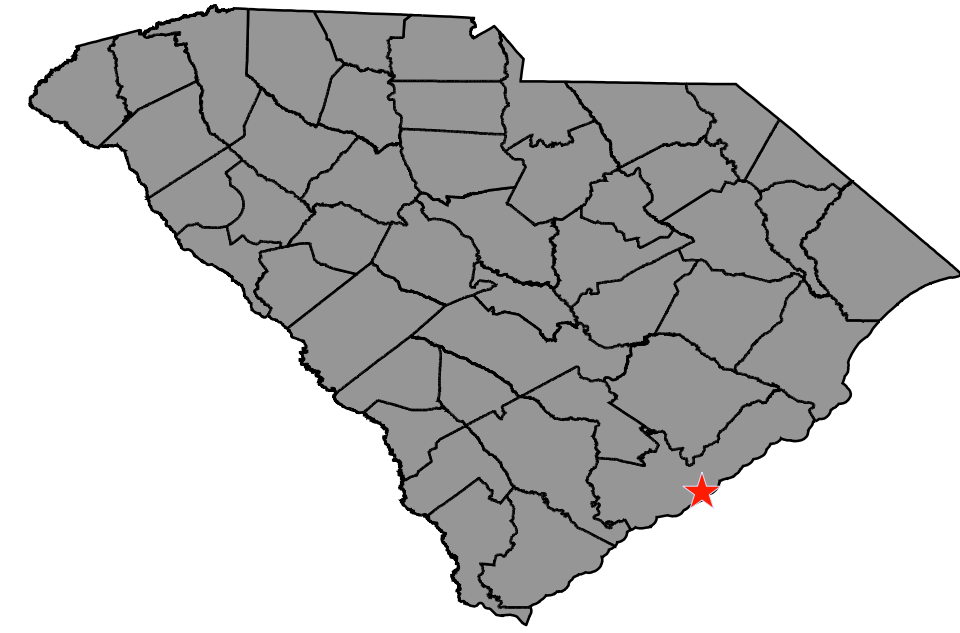




# CONCEPTUAL BIKE AND PEDESTRIAN SAFETY IMPROVEMENTS

## S-404 (CALHOUN STREET)

### Project Location CHARLESTON COUNTY



### Map Legend

-  **ROADWAY PAVEMENT**
-  **PROPOSED CONCRETE**
-  **PROPOSED SIDEWALK**
-  **EXISTING RIGHT OF WAY**
-  **EXISTING PROPERTY LINE**
-  **PROPOSED RECTANGULAR RAPID-FLASHING BEACON (RRFB)**
-  **PROPOSED BIKE MARKINGS**
-  **PROPOSED DETECTABLE WARNING SURFACE**
-  **EXISTING SIGNAL**

IMPROVEMENTS AT EACH TRAFFIC SIGNAL INCLUDE:  
 -LEADING PEDESTRIAN INTERVALS TO PRIORITIZE PEDESTRIANS ENTERING THE INTERSECTION AND REDUCE CONFLICTS  
 -RETROREFLECTIVE BACKPLATES TO IMPROVE SIGNAL HEAD VISIBILITY AND REDUCE SUN GLARE  
 -FLASHING YELLOW ARROW SIGNAL HEADS TO IMPROVE SAFETY DURING PERMISSIVE LEFT-TURNS  
 -ADDITIONAL SIGNAGE SUCH AS STREET NAMES AND YIELD TO PEDESTRIANS

SCALE IN FEET  
 0 100 200 400



### Contact Information

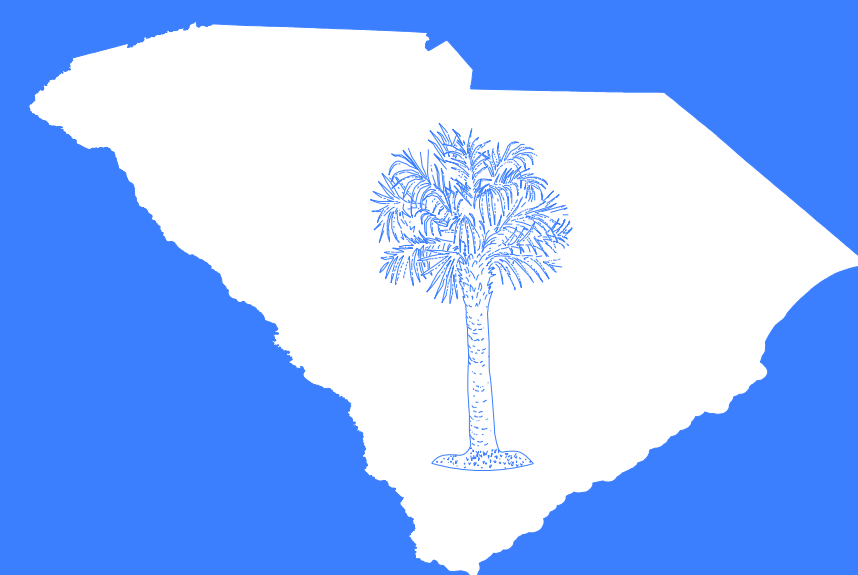
South Carolina Dept. of Transportation  
 955 Park Street  
 Columbia SC 29201

Questions/comments may be sent to:  
 Kaylon Meetze, SCDOT Safety Projects Manager  
 Phone: 803-737-2638  
 Email: MeetzeKR@scdot.org

Project Website:  
<https://scdotgis.online/>

### Disclaimer

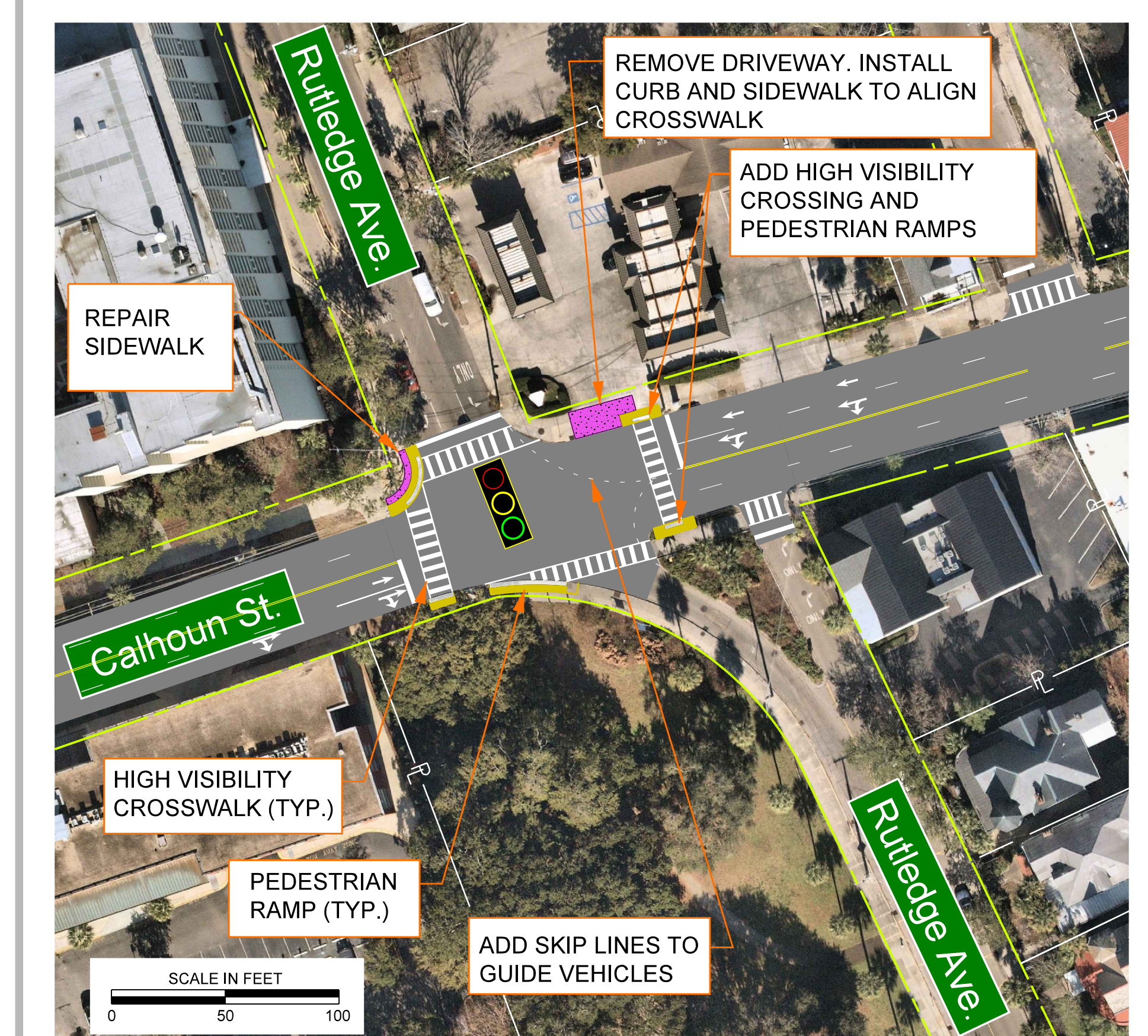
These displays are meant to show concepts for planning purposes only and are subject to change.



MATCHLINE SEE SHEET 3



INSET 1

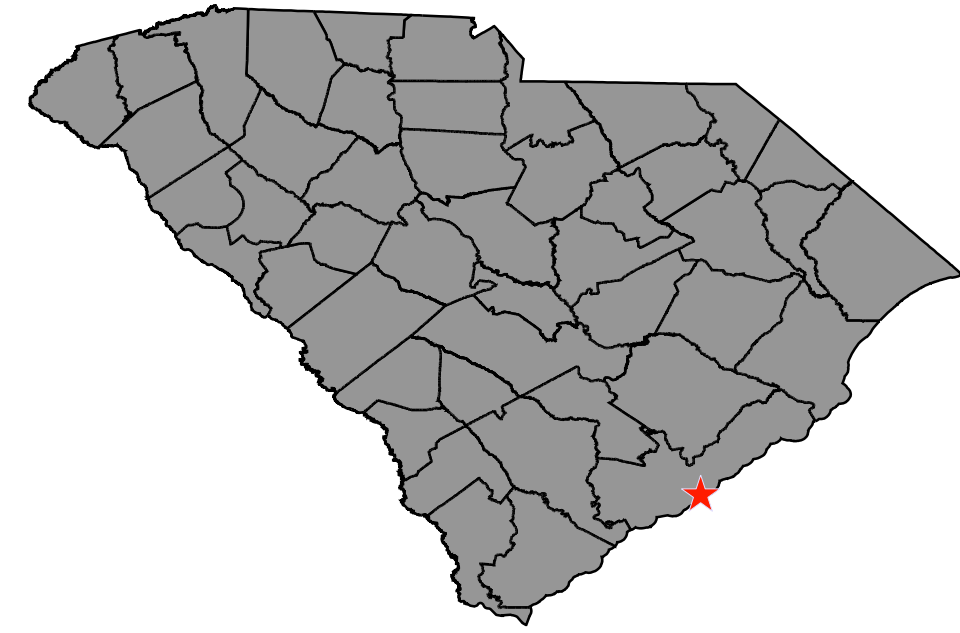


INSET 2



# CONCEPTUAL BIKE AND PEDESTRIAN SAFETY IMPROVEMENTS S-404 (CALHOUN STREET)

Project Location  
CHARLESTON COUNTY



## Map Legend

-  ROADWAY PAVEMENT
-  PROPOSED CONCRETE
-  PROPOSED SIDEWALK
-  EXISTING RIGHT OF WAY
-  EXISTING PROPERTY LINE
-  PROPOSED RECTANGULAR RAPID-FLASHING BEACON (RRFB)
-  PROPOSED BIKE MARKINGS
-  PROPOSED DETECTABLE WARNING SURFACE
-  EXISTING SIGNAL

IMPROVEMENTS AT EACH TRAFFIC SIGNAL INCLUDE:  
 -LEADING PEDESTRIAN INTERVALS TO PRIORITIZE PEDESTRIANS ENTERING THE INTERSECTION AND REDUCE CONFLICTS  
 -RETROREFLECTIVE BACKPLATES TO IMPROVE SIGNAL HEAD VISIBILITY AND REDUCE SUN GLARE  
 -FLASHING YELLOW ARROW SIGNAL HEADS TO IMPROVE SAFETY DURING PERMISSIVE LEFT-TURNS  
 -ADDITIONAL SIGNAGE SUCH AS STREET NAMES AND YIELD TO PEDESTRIANS

SCALE IN FEET  
0 100 200 400



## Contact Information

South Carolina Dept. of Transportation  
955 Park Street  
Columbia SC 29201

Questions/comments may be sent to:  
Kaylon Meetze, SCDOT Safety Projects Manager  
Phone: 803-737-2638  
Email: MeetzeKR@scdot.org

Project Website:  
<https://scdotgis.online/>

## Disclaimer

These displays are meant to show concepts for planning purposes only and are subject to change.

