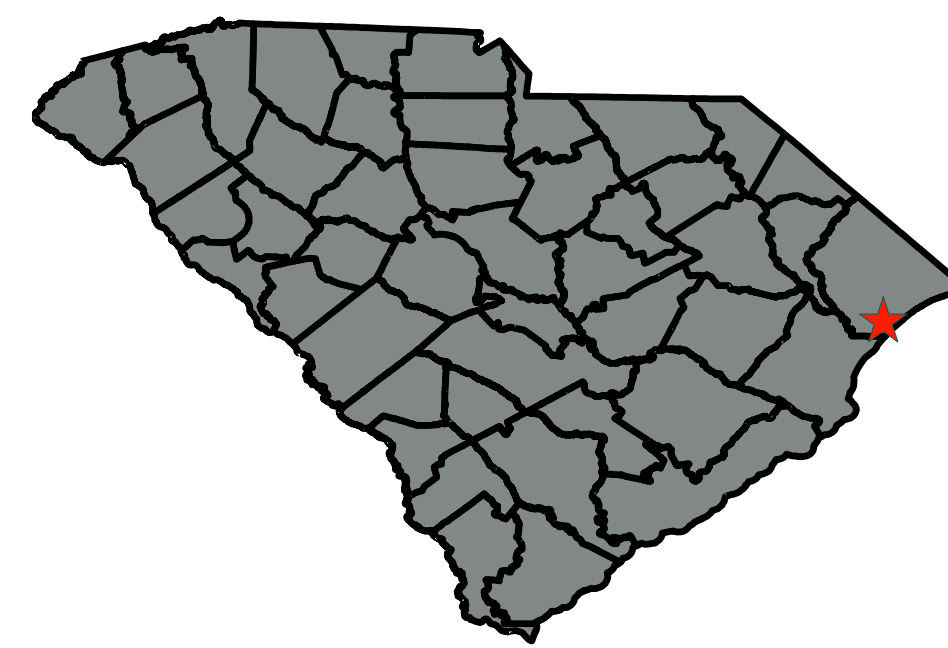


**Project Location**  
Horry County



**Map Legend**

- PROPOSED ROADWAY**
- PROPERTY LINE**
- SIDEWALK**
- CONCRETE MEDIAN**
- GRASS MEDIAN**
- REMOVAL OF DRIVEWAY**

**Project Website**

<https://sc-707-socastee-boulevard-safety-improvements-scdot.hub.arcgis.com/>

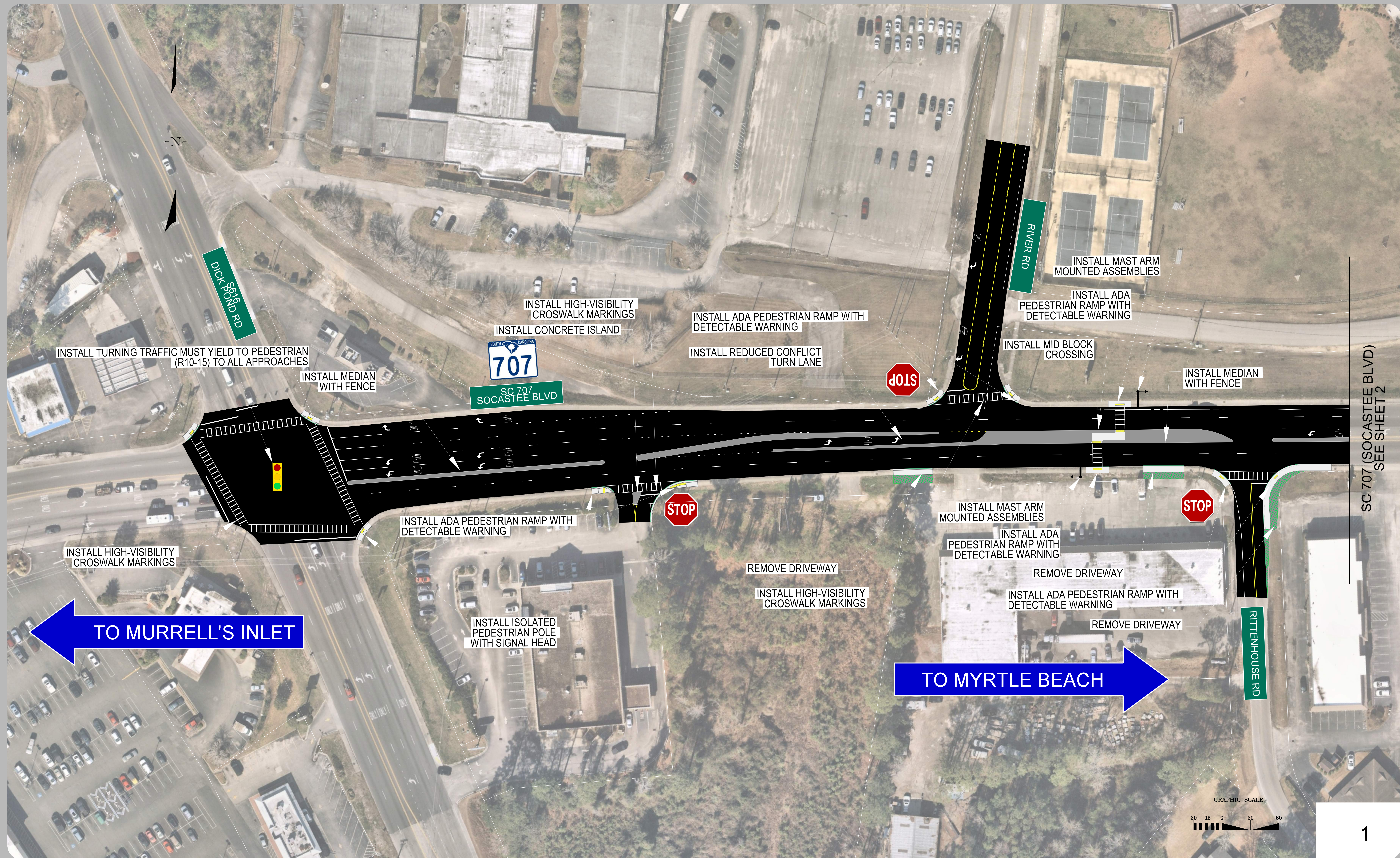
**Contact Information**

South Carolina Dept. of Transportation  
955 Park Street  
Columbia SC 29201

Questions/comments may be sent to:  
Kalyon Meetze, PE  
South Carolina Dept. of Transportation  
P.O. Box 191  
Columbia, SC 29202-0191  
meetzekr@scdot.org

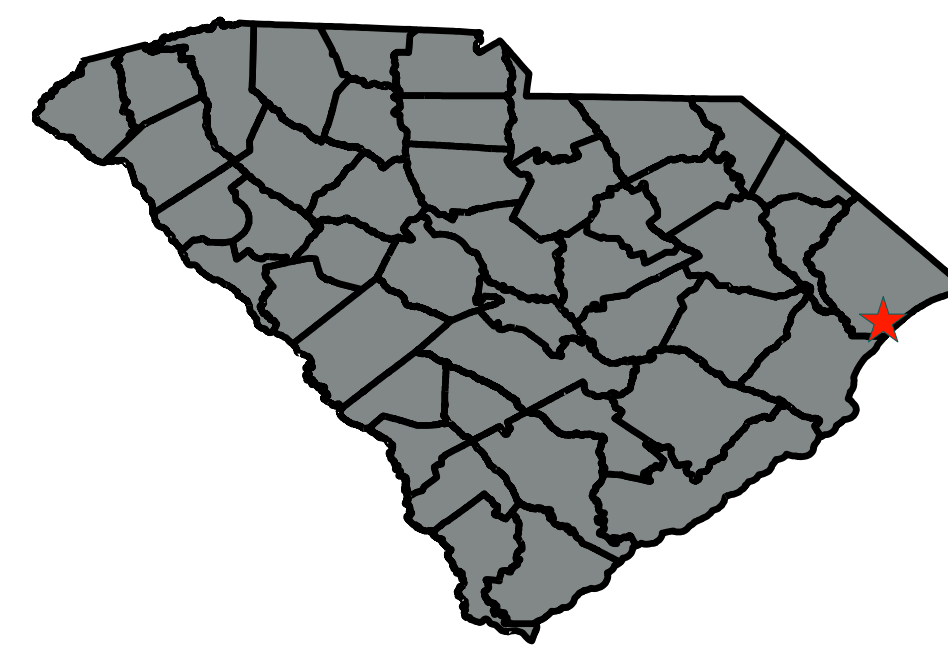
**Disclaimer**

These displays are meant to show concepts for planning purposes only and are subject to change.



SC 707 (SOCASTEE BLVD)  
SEE SHEET 2

**Project Location**  
Horry County



**Map Legend**

- PROPOSED ROADWAY**
- PROPERTY LINE**
- SIDWALK**
- CONCRETE MEDIAN**
- GRASS MEDIAN**
- REMOVAL OF DRIVEWAY**

**Project Website**

<https://sc-707-socastee-boulevard-safety-improvements-scdot.hub.arcgis.com/>

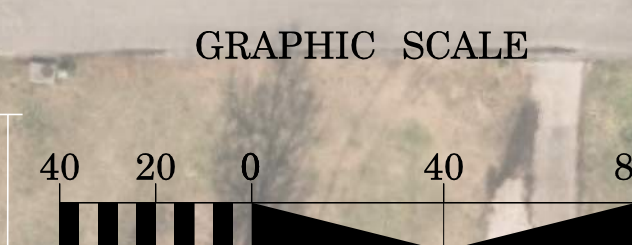
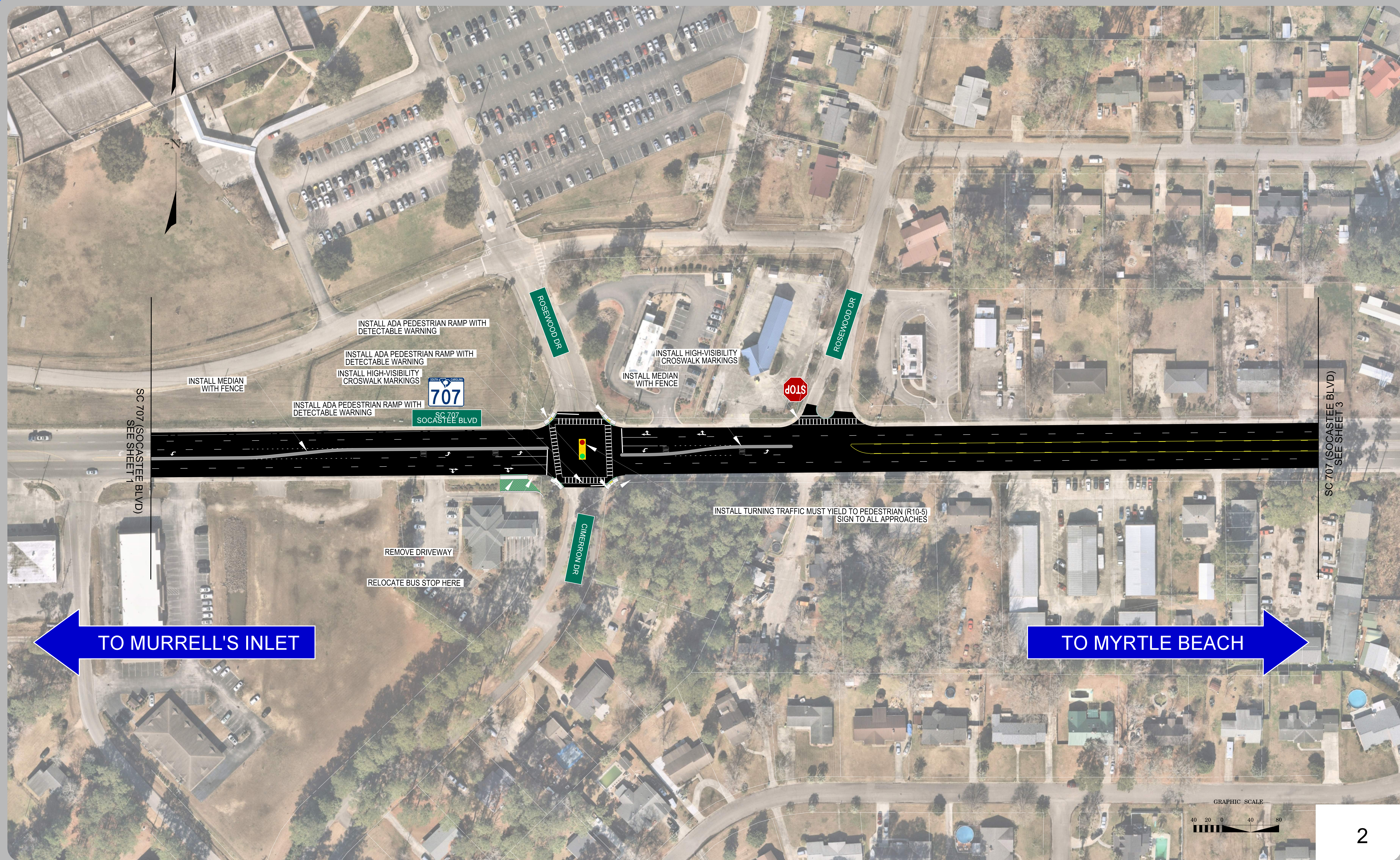
**Contact Information**

South Carolina Dept. of Transportation  
955 Park Street  
Columbia SC 29201

Questions/comments may be sent to:  
Kalyon Meetze, PE  
South Carolina Dept. of Transportation  
P.O. Box 191  
Columbia, SC 29202-0191  
meetzekr@scdot.org

**Disclaimer**

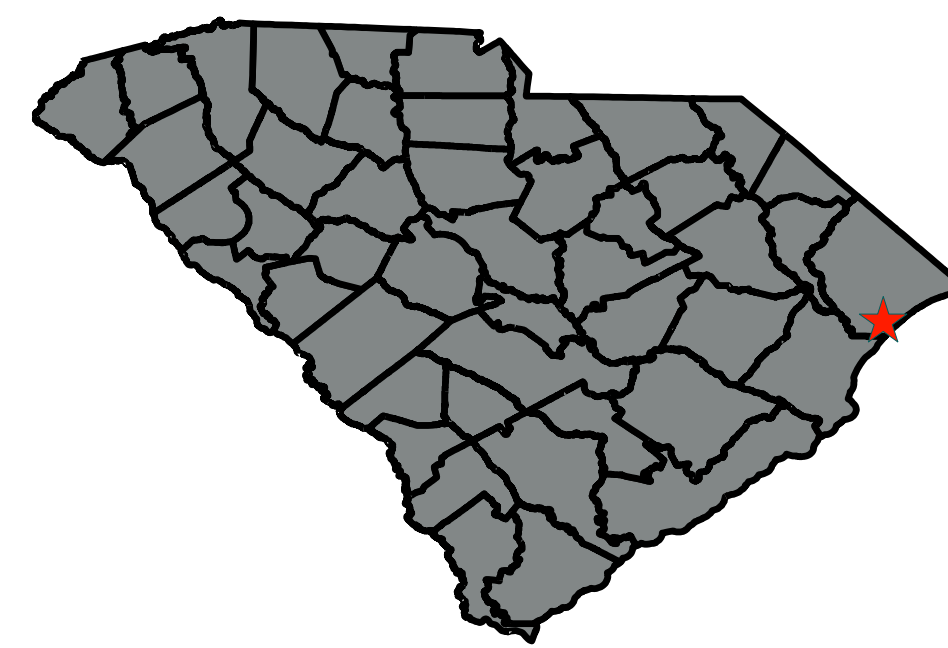
These displays are meant to show concepts for planning purposes only and are subject to change.



# CONCEPTUAL ROADWAY IMPROVEMENTS

## SC 707 / SOCASTEE BLVD SAFETY IMPROVEMENTS - P041889

**Project Location**  
Horry County



### Map Legend

- PROPOSED ROADWAY**
- PROPERTY LINE**
- SIDEWALK**
- CONCRETE MEDIAN**
- GRASS MEDIAN**
- REMOVAL OF DRIVEWAY**

### Project Website

<https://sc-707-socastee-boulevard-safety-improvements-scdot.hub.arcgis.com/>

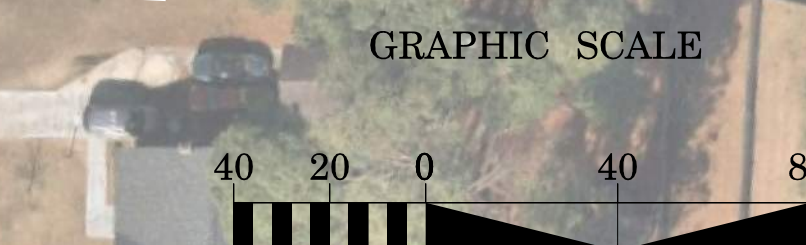
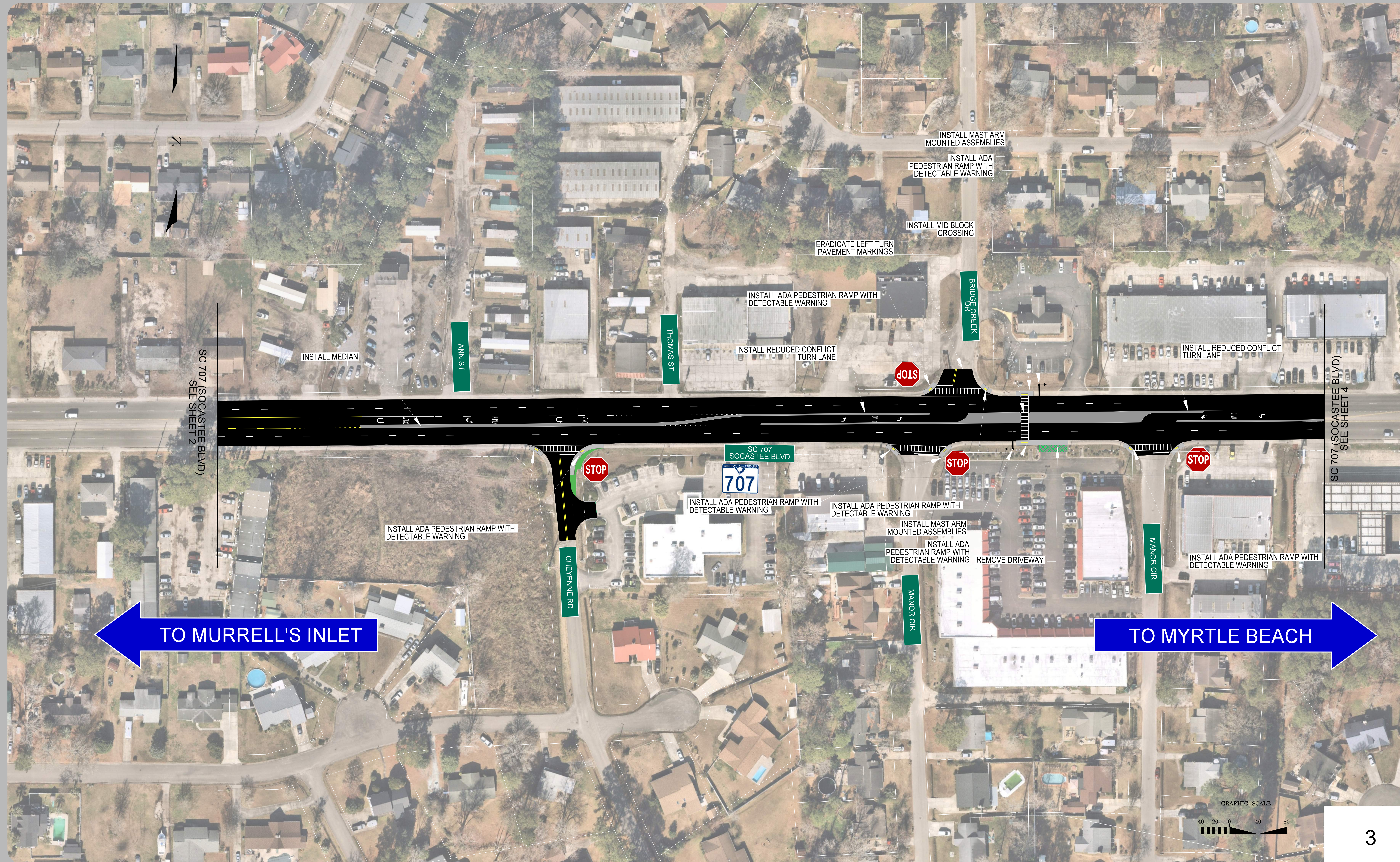
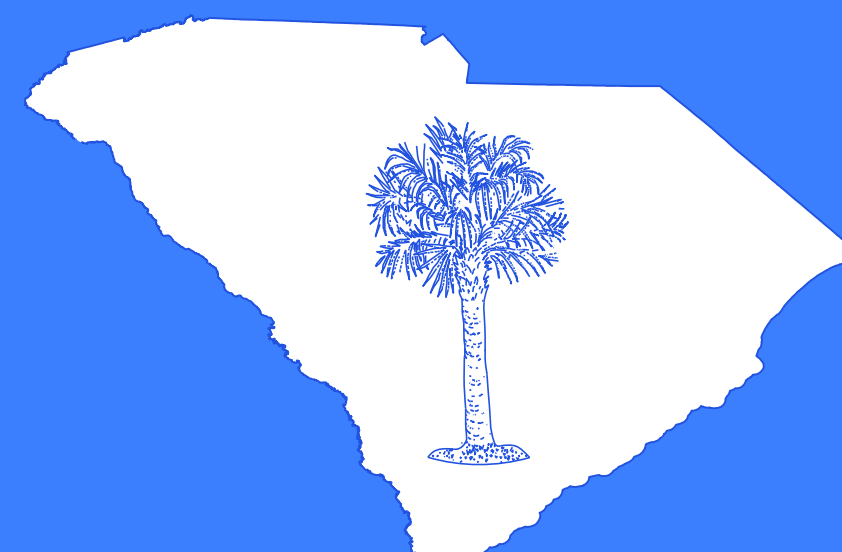
### Contact Information

South Carolina Dept. of Transportation  
955 Park Street  
Columbia SC 29201

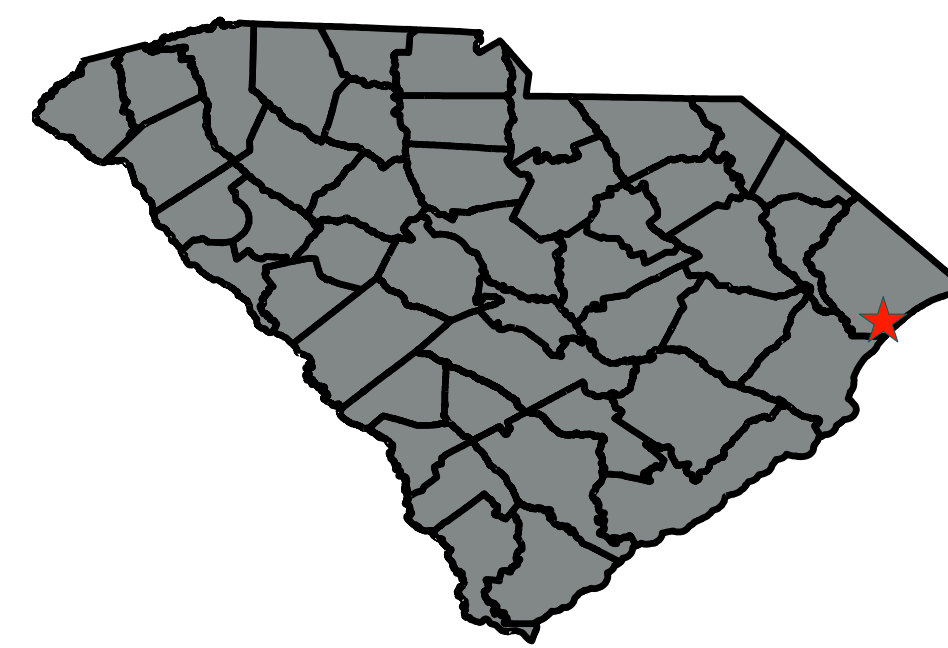
Questions/comments may be sent to:  
Kalyon Meetze, PE  
South Carolina Dept. of Transportation  
P.O. Box 191  
Columbia, SC 29202-0191  
meetzkr@scdot.org

### Disclaimer

These displays are meant to show concepts for planning purposes only and are subject to change.



**Project Location**  
Horry County



**Map Legend**

- PROPOSED ROADWAY**
- PROPERTY LINE**
- SIDEWALK**
- CONCRETE MEDIAN**
- GRASS MEDIAN**
- REMOVAL OF DRIVEWAY**

**Project Website**

<https://sc-707-socastee-boulevard-safety-improvements-scdot.hub.arcgis.com/>

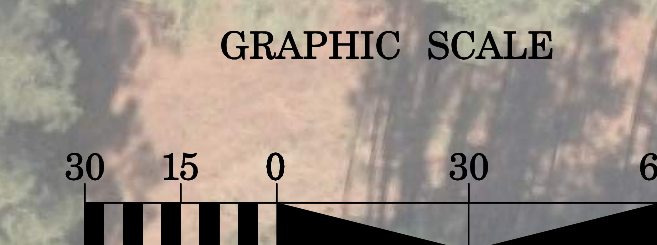
**Contact Information**

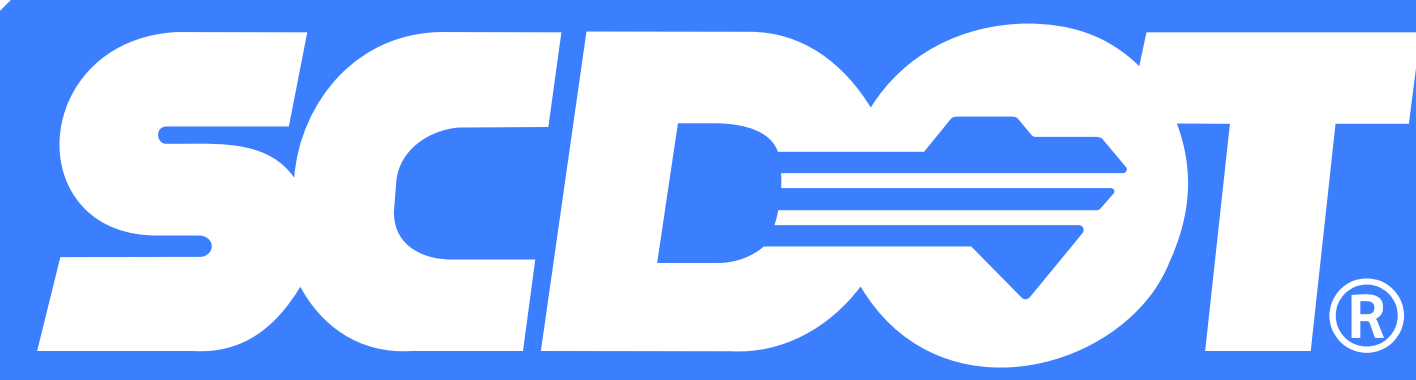
South Carolina Dept. of Transportation  
955 Park Street  
Columbia SC 29201

Questions/comments may be sent to:  
Kalyon Meetze, PE  
South Carolina Dept. of Transportation  
P.O. Box 191  
Columbia, SC 29202-0191  
meetzekr@scdot.org

**Disclaimer**

These displays are meant to show concepts for planning purposes only and are subject to change.



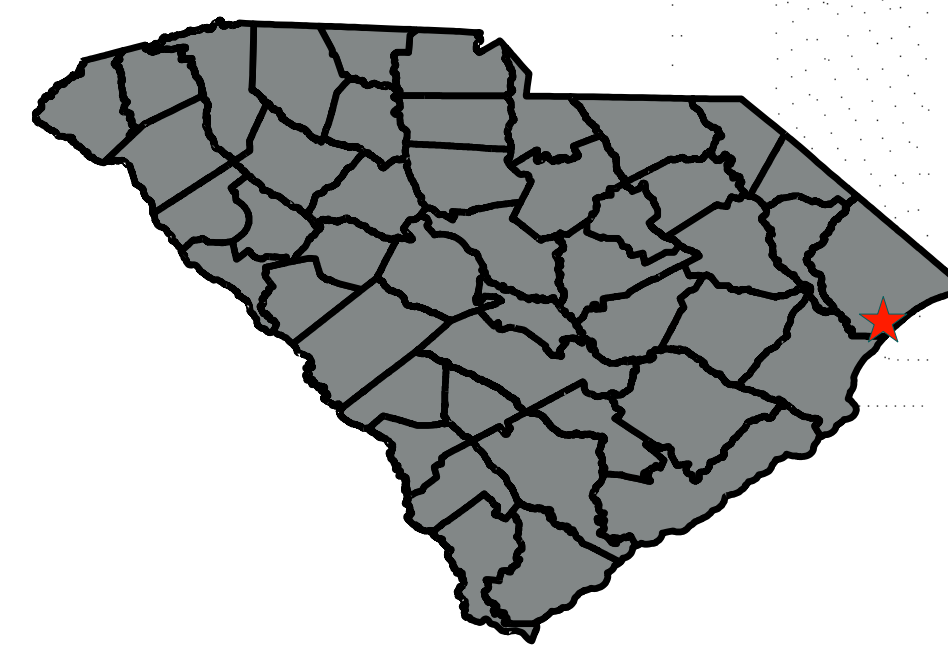


South Carolina Department of Transportation

# CONCEPTUAL ROADWAY IMPROVEMENTS

## SC 707 / SOCASTEE BLVD SAFETY IMPROVEMENTS - P041889

Project Location  
Horry County



### Map Legend

-  PROPOSED ROADWAY
-  PROPERTY LINE
-  SIDEWALK
-  CONCRETE MEDIAN
-  GRASS MEDIAN
-  REMOVAL OF DRIVEWAY

### Project Website

<https://sc-707-socastee-boulevard-safety-improvements-scdot.hub.arcgis.com/>

### Contact Information

South Carolina Dept. of Transportation  
955 Park Street  
Columbia SC 29201

Questions/comments may be sent to:  
Kalyon Meetze, PE  
South Carolina Dept. of Transportation  
P.O. Box 191  
Columbia, SC 29202-0191  
[meetzekr@scdot.org](mailto:meetzekr@scdot.org)

### Disclaimer

These displays are meant to show concepts for planning purposes only and are subject to change.

