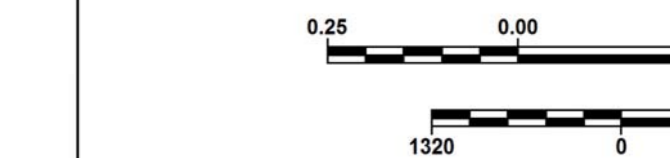




TRAFFIC COUNT STATIONS  
**CITY OF MARION**  
 MARION COUNTY

PREPARED BY THE  
**SOUTH CAROLINA DEPARTMENT OF TRANSPORTATION**  
 IN COOPERATION WITH THE  
**U.S. DEPARTMENT OF TRANSPORTATION**  
 FEDERAL HIGHWAY ADMINISTRATION

OCTOBER 2017



The South Carolina Department of Transportation makes no representations or warranties, implied or expressed, concerning the accuracy, completeness, reliability, or suitability, for any particular purpose of the information and data contained on this map or any information furnished in connection herewith.

For ordering information, please contact:  
 South Carolina Department of Transportation  
 Engineering Publications Sales Office  
 955 Park Street - Room 122  
 Columbia, SC 29201 (803) 737-4533  
 E-mail: engrpubsales@scdot.org

For comments concerning this map, please contact:  
 GIS/Mapping - (803) 737-3103  
 E-mail: gismapping@scdot.org



**ROAD SYSTEM**

INTERSTATE	
U.S. ROUTE	
S.C. ROUTE	
SECONDARY ROUTE	
EXIT NUMBER	
INTERSTATE	
MULTI-LANE HIGHWAY	
TWO-LANE HIGHWAY	
DIVIDED HIGHWAYS & ROADS	
UNPAVED HIGHWAY	
PAVED COUNTY	
UNPAVED COUNTY	
PRIVATE	
RAILROAD	
GENERAL HIGHWAY BRIDGE (BETWEEN 20' - 150')	
BRIDGES OVER 150' ARE SHOWN AT ACTUAL SCALE	

**BOUNDARY & HYDROGRAPHY**

NARROW STREAM	
WIDE STREAM OR RIVER	
RESERVOIR, POND OR LAKE	
WETLAND OR MARSH	
STATE LINE	
COUNTY LINE	
INCORPORATED AREA	
EXTENT OF LARGE SCALE MAP	
MILITARY INSTALLATIONS AND GOVERNMENT INSTITUTIONS	
NATIONAL AND STATE FORESTS, STATE PARKS, AND NATIONAL WILDLIFE REFUGES	

**MAP FEATURES**

PARK AND RIDE		HOSPITAL	
ARMORY		SCHOOL	
CHURCH		POINT OF INTEREST	
CEMETERY		COURTHOUSE	
CHURCH AND CEMETERY		WELCOME CENTER AND REST AREA	
AIRPORT COMPLETE FACILITIES		AIRPORT LIMITED FACILITIES	
SCDOT DISTRICT OFFICE / MAINTENANCE SHOP			

TRAFFIC COUNT STATION.....▲  
 TRAFFIC STATION NUMBER.....111