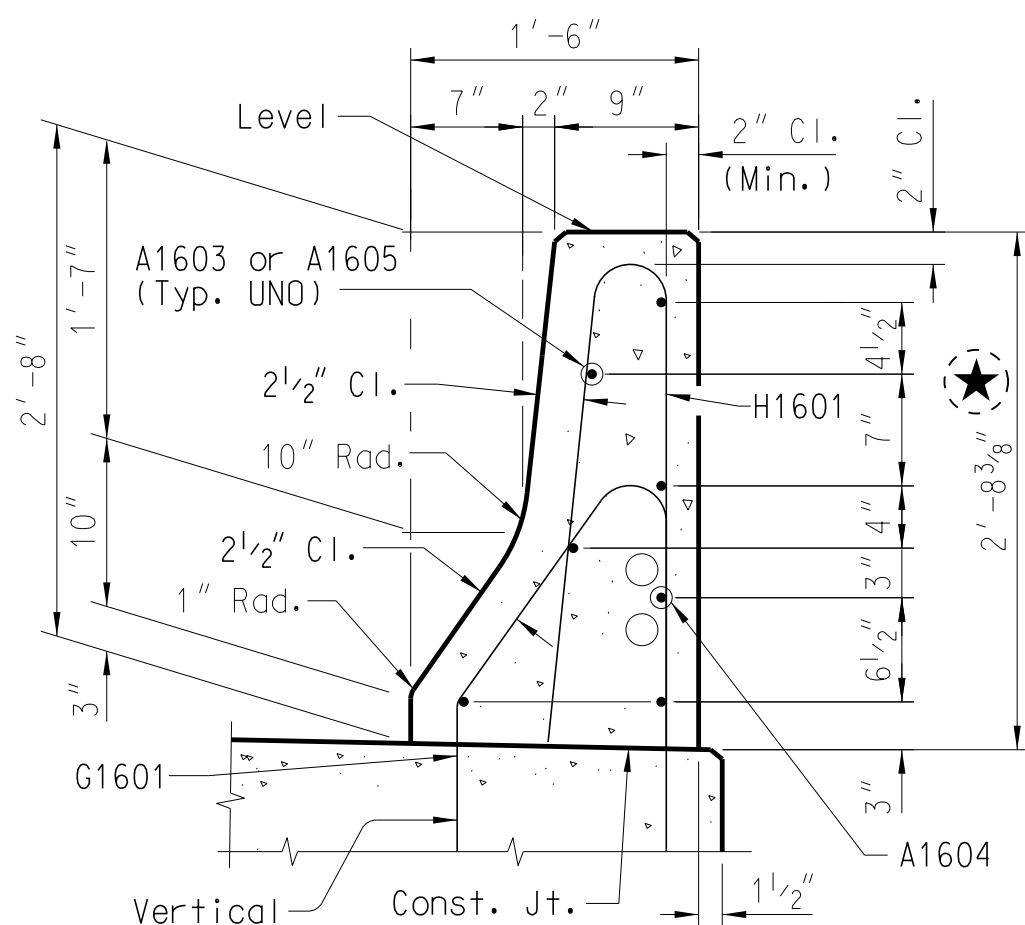


SB	1" Ht.				As Necessary	
CHCU	12 $\frac{3}{4}$ " Ht.				As Necessary	

## QUANTITIES

ITEM	UNIT	120' SPAN
Concrete, Class 4000	CY	280.7
Reinforcing Steel	LB	57,267
Barrier Parapet	LF	240.0
Elastomeric Bearing Assembly (Flat Slab)	EA	4



SECTION C-C  
(Slab Reinforcing not Shown)

Cast the 120' continuous unit in one pour from one end of span to the other using a suitable screed. Use an approved retarding agent and establish and maintain a minimum pouring rate of 60 CY per hour unless approved otherwise by the RCE.

Do not remove slab falsework until the entire 120' span unit has been poured and cured according to Section 702 of the Standard Specifications.

For Section thru Slab and Slab Drain Details, see Sh. XX.

For Slab Drain Locations, see Sh. XX.

For Reinforcing Bending Details, see Sh. XX.

- ① Splice A2501 & A2501 bars 3'-3" min.
- ② Splice A1602 & A3201 bars 2'-4" min.
- ③ Splice A3201 & A3201 bars 7'-3" min.

3'-0" min. Splice

Detail the A1604 bars 7'-0" in length.  
Only A1604 bar shown for clarity.

Note to Designer:

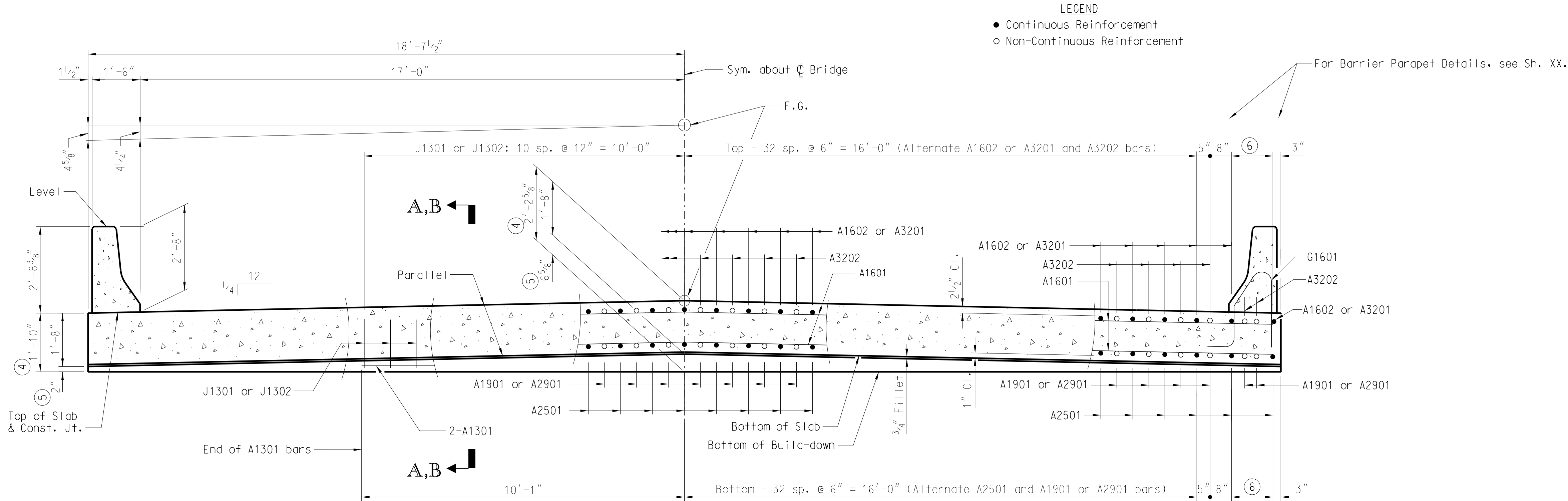
Note to Designer:

This drawing furnished for information only. All dimensions shown are sheet specific. Any use of this design and drawing, including dimensions, must be checked by the User's Engineer to ensure design is adequate for the intended use. All drawings must be signed and sealed by a South Carolina Registered Professional Engineer when used.

Dimensions shown are calculated for bridges with normal crown and SE = 0.0208 ft./ft. Designer to revise dimensions for different geometry.

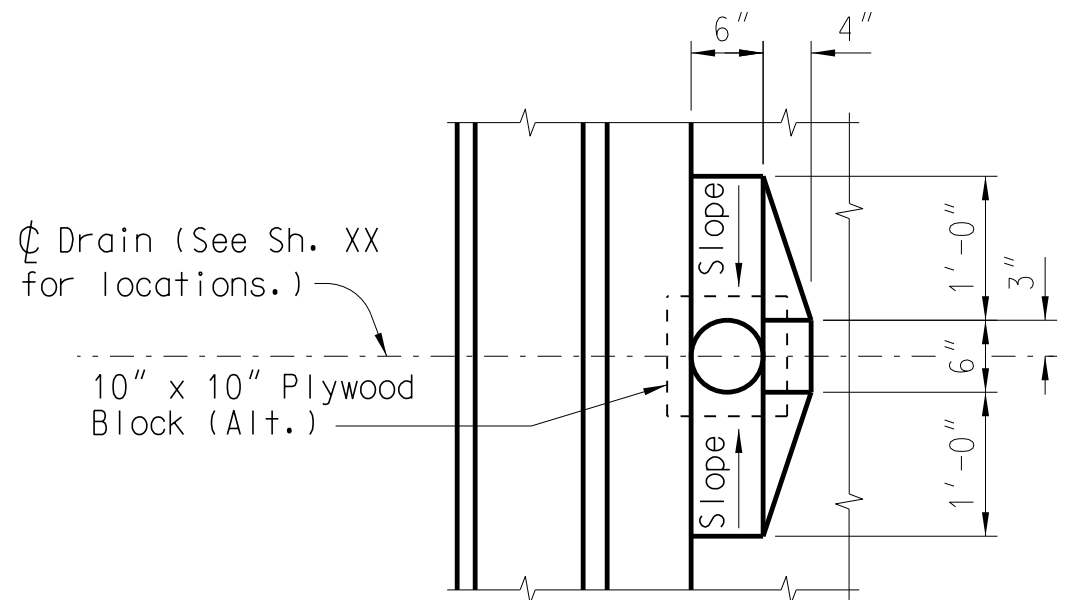
REV.				SOUTH CAROLINA DEPARTMENT OF TRANSPORTATION  3 SPAN 120'-0" UNIT  SUPERSTRUCTURE  (34'-0" ROADWAY)
REV.	PCW	MCCA	4-18	
	MASH	Guardrail		
REV.	JXY	SAN	3-14	
		New Border		
REVIEWED				
QUAN.	MRW	BMH	9-11	
DR.	MRW	BMH	9-11	
DES.	MRW	BMH	9-11	
BY	CHK.	DATE		COUNTY XXXXXXXX  ROUTE XXXXXX

- Notes:
- Cast lower portion of wing walls monolithic with slab unless approved otherwise by RCE.
- UND - Unless Noted Otherwise
- ① Provide drain pipes that are 6" nominal diameter Schedule 40 PVC Pipe meeting the requirements of ASTM D 1785 or 6" nominal diameter fiberglass pipe meeting the requirements of ASTM D 2996. Cement at least two lugs, of a size suitable to anchor the pipe, to the portion of the pipe embedded in the concrete slab. Include all costs of furnishing and placing drains in the unit price bid for Concrete for Structures, Class 4000.
- ② 1/2" elastomeric bearing pad 60 Durometer hardness. Provide materials for elastomeric bearings that conform to Section 724 of the Standard Specifications. Provide a pad the same length and width of slab build-down. Place stock length pieces end to end provided that no individual piece is less than 6'-0" in length. Include all costs for furnishing and placing the pads in the unit price bid for Elastomeric Bearing Assembly (Flat Slab).
- ③ Provide 1/2" elastomeric bearing pad 60 Durometer hardness. Use materials for elastomeric bearings that conform to Section 724 of the Standard Specifications. Include all costs for furnishing and placing the pads in the unit price bid for Elastomeric Bearing Assembly (Flat Slab).
- ④ At  $\phi$  Bent.
- ⑤ Includes 1/2" elastomeric bearing pad.
- ⑥ 3 eq. sp. = 1'-3 1/2"



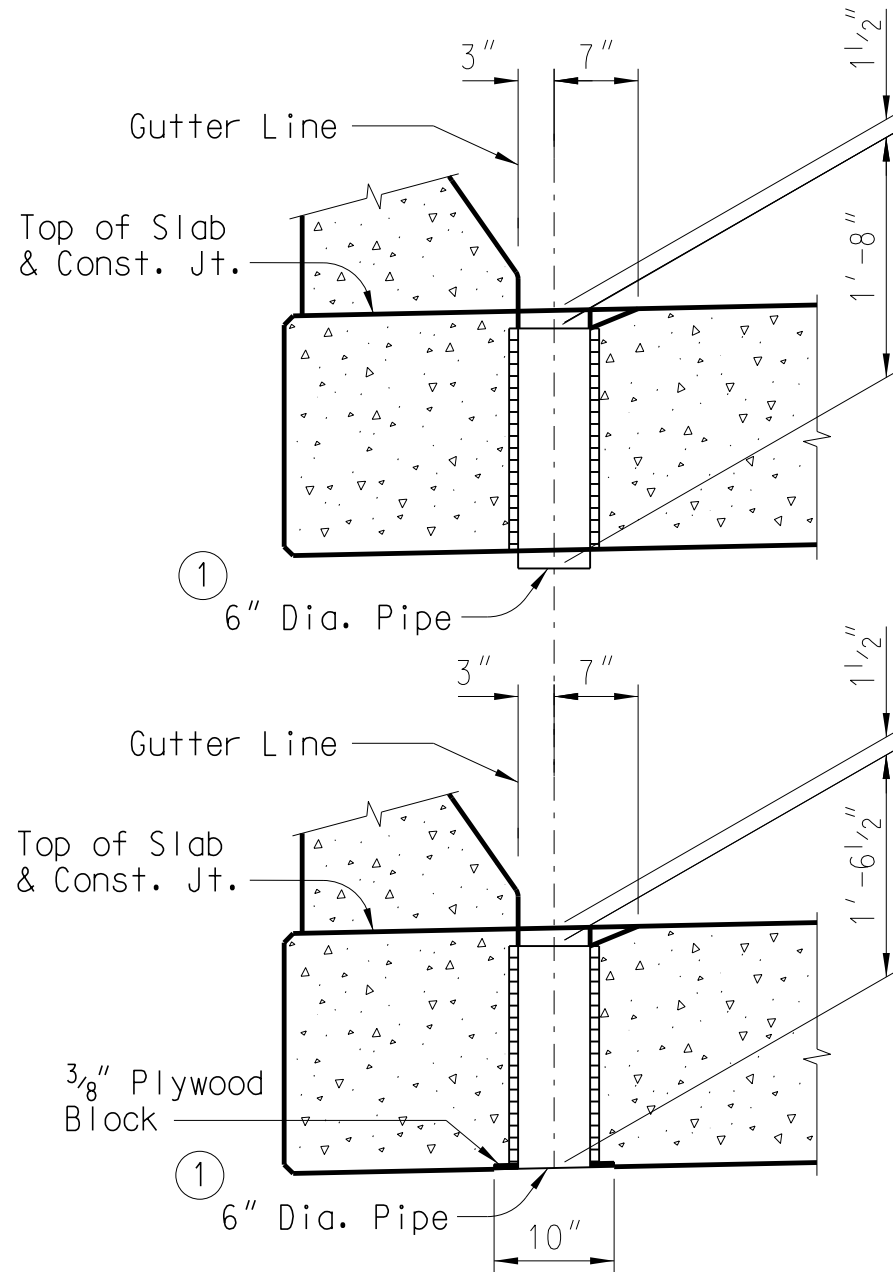
SECTION THRU 120' SPAN

(Deck Drains Not Shown)

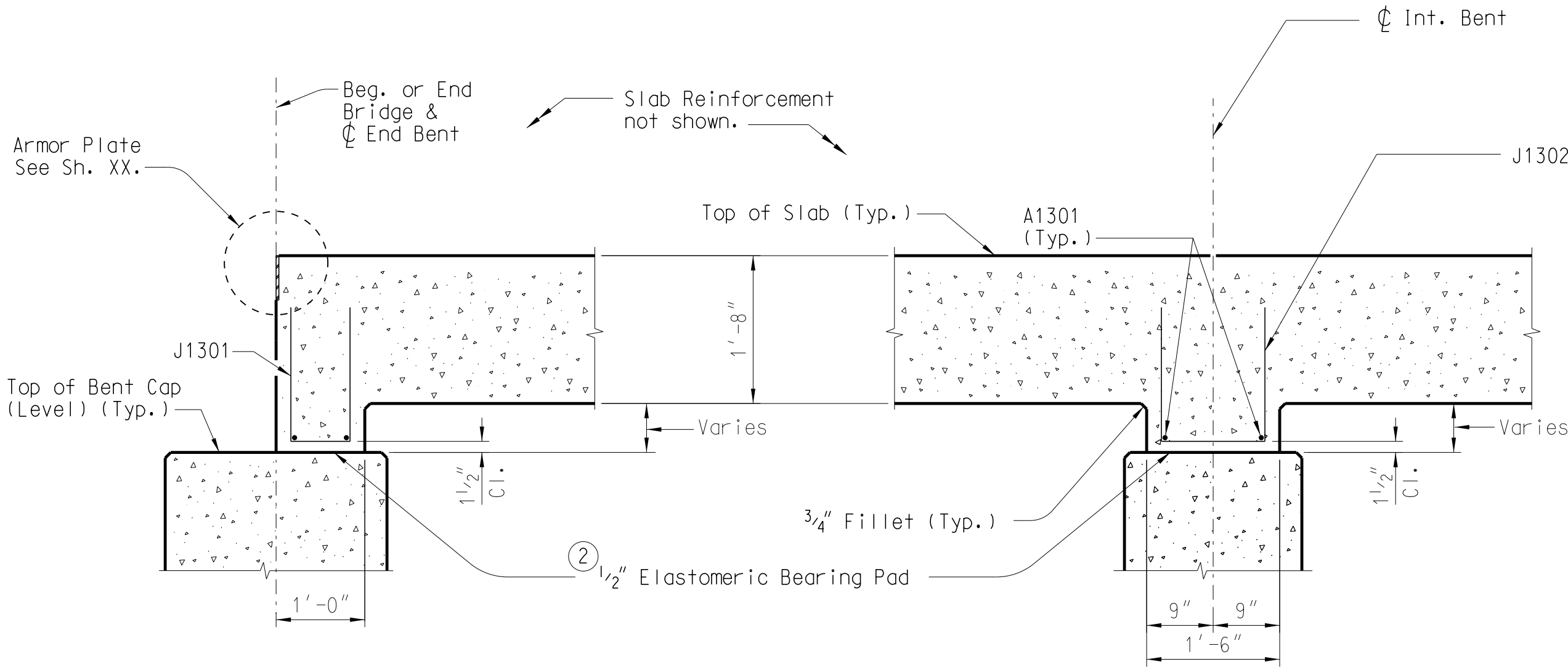


ALTERNATES

(Slab Reinf. not shown)



DRAIN DETAILS



SECT. A-A

(At End Bents)

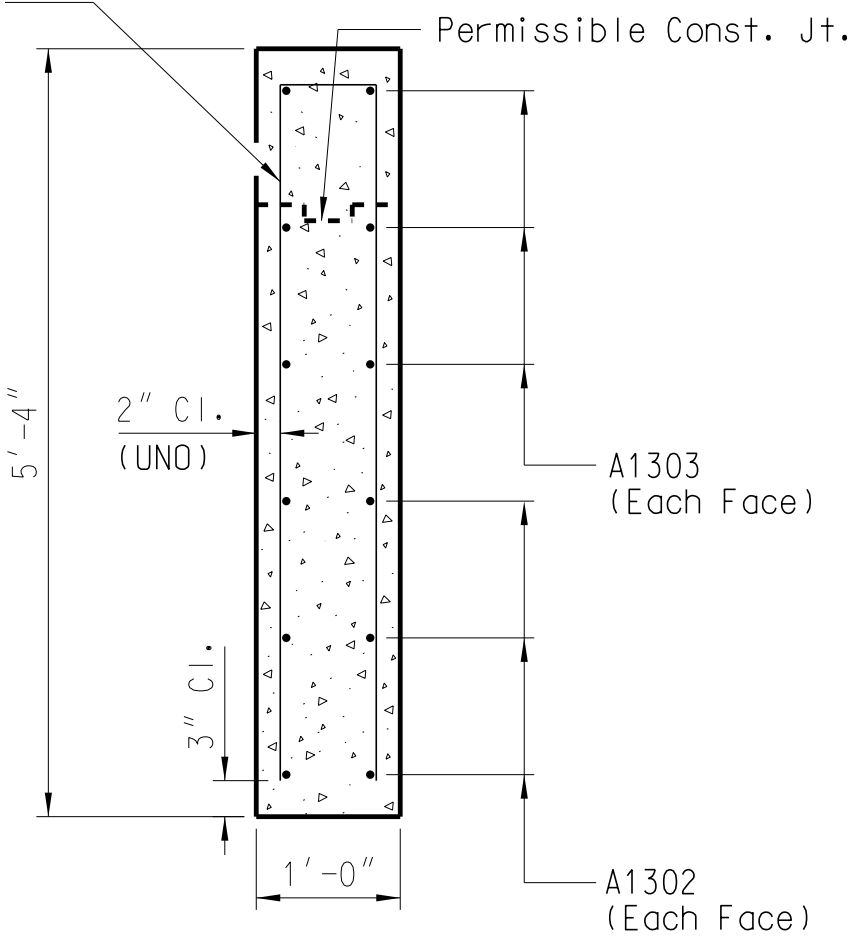
SECT. B-B

(At Interior Bents)

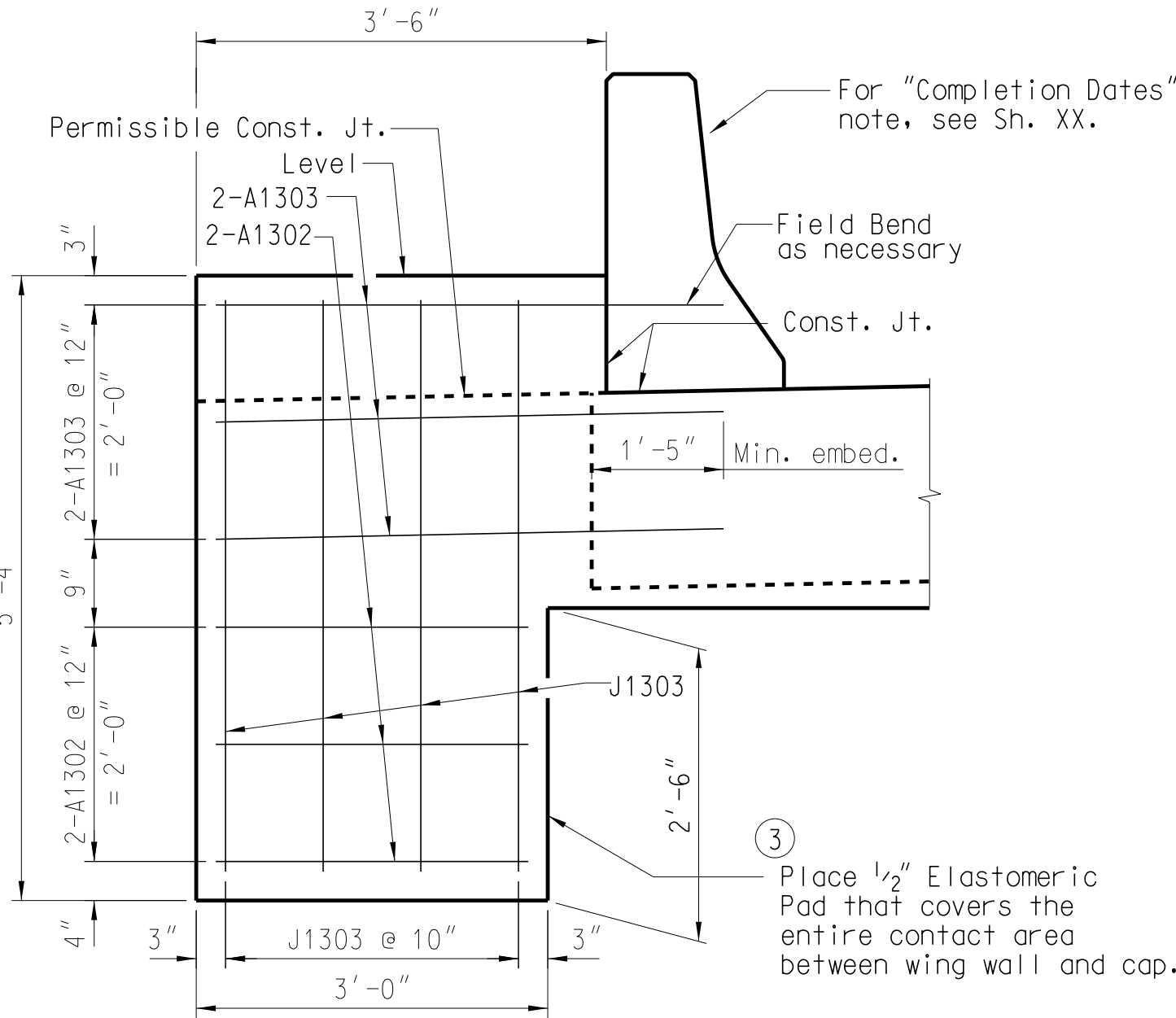
SLAB BUILD-DOWN DETAILS

Note to Designer:  
This drawing furnished for information only. All dimensions shown are sheet specific. Any use of this design and drawing, including dimensions, must be checked by the User's Engineer to ensure design is adequate for the intended use. All drawings must be signed and sealed by a South Carolina Registered Professional Engineer when used.

SECTION THRU WING WALL



WING WALL DETAILS



REV.				SOUTH CAROLINA	
REV.	PCW	MCCA	4-18	DEPARTMENT OF TRANSPORTATION	
REV.	JXY	SAN	3-14	3 SPAN 120'-0" UNIT	
REV.			New Border	SUPERSTRUCTURE	
REVIEWED				DETAILS	
QUAN.	MRW	BMH	9-11		
DR.	MRW	BMH	9-11		
DES.	MRW	BMH	9-11		
BY	CHK.	DATE		COUNTY	ROUTE
				XXXXXXX	XXXXXX