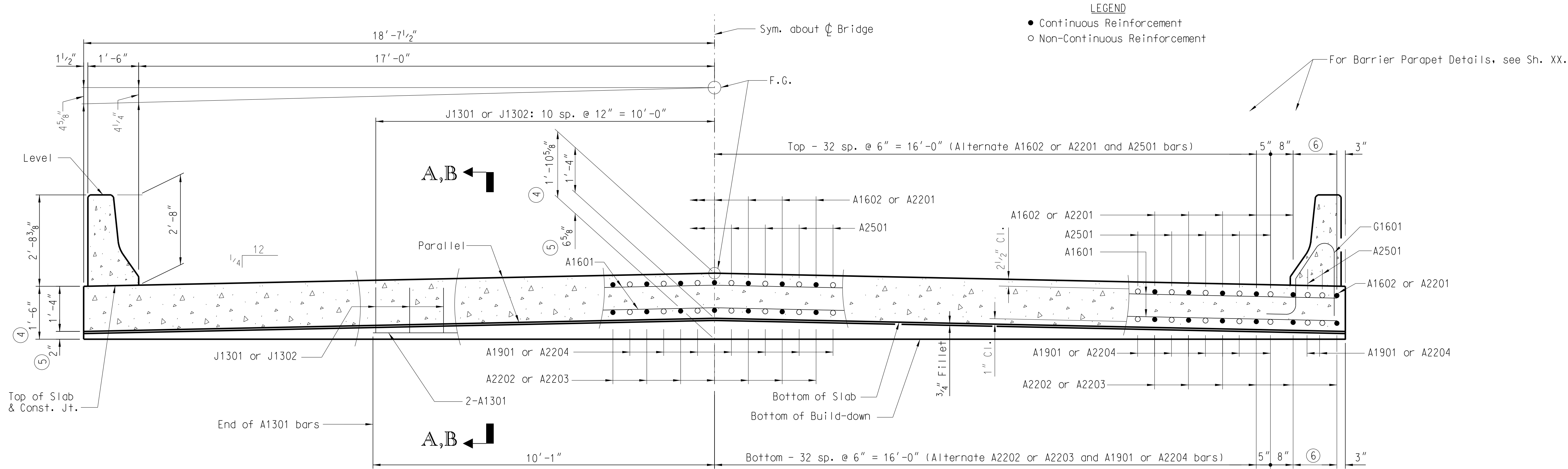


SB	1" Ht.	As Necessary
CHCU	9 1/2" Ht.	As Necessary
<h2 style="text-align: center;">QUANTITIES</h2>		
ITEM	UNIT	74' SPAN
Concrete, Class 4000	CY	140.8
Reinforcing Steel	LB	26,139
Barrier Parapet	LF	148.0
Elastomeric Bearing Assembly (Flat Slab)	EA	4

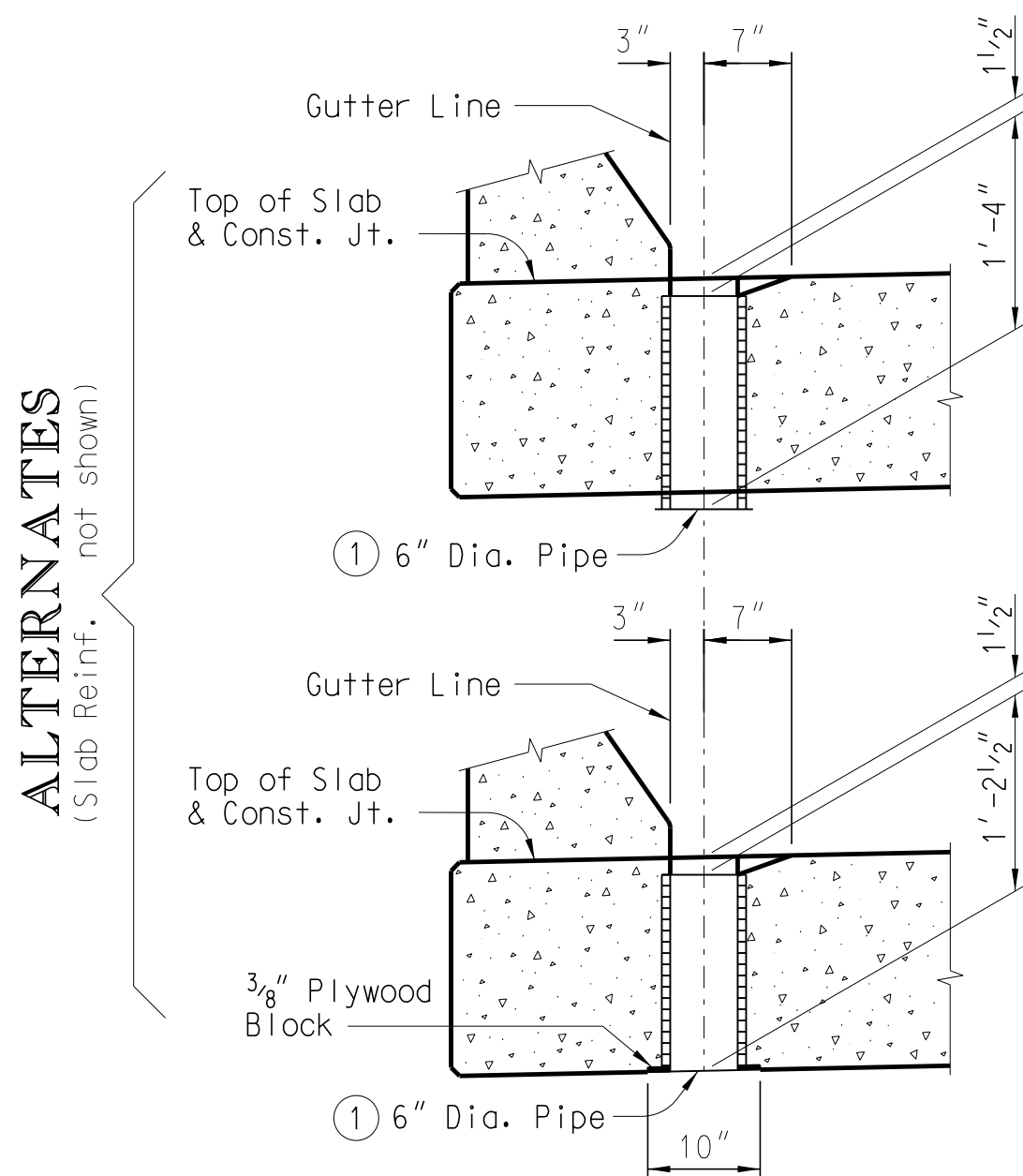
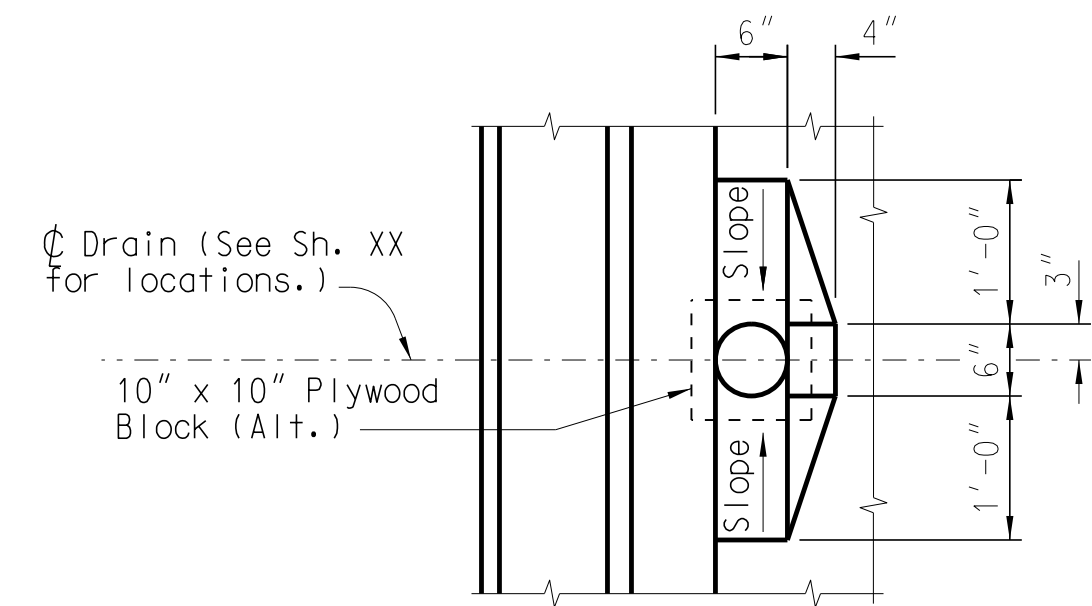


REV.				SOUTH CAROLINA DEPARTMENT OF TRANSPORTATION 74'-0" SPAN UNIT SUPERSTRUCTURE (34'-0" ROADWAY)
REV.	PCW	LEW	3-18	
	MASH Guardrail			
REV.	JXY	SAN	3-14	
	New Border			
REVIEWED				
QUAN.	JDC	BMH	9-11	
DR.	JDC	BMH	9-11	
DES.	JDC	BMH	9-11	
BY	CHK.	DATE		COUNTY XXXXXXXX
				ROUTE XXXXXX

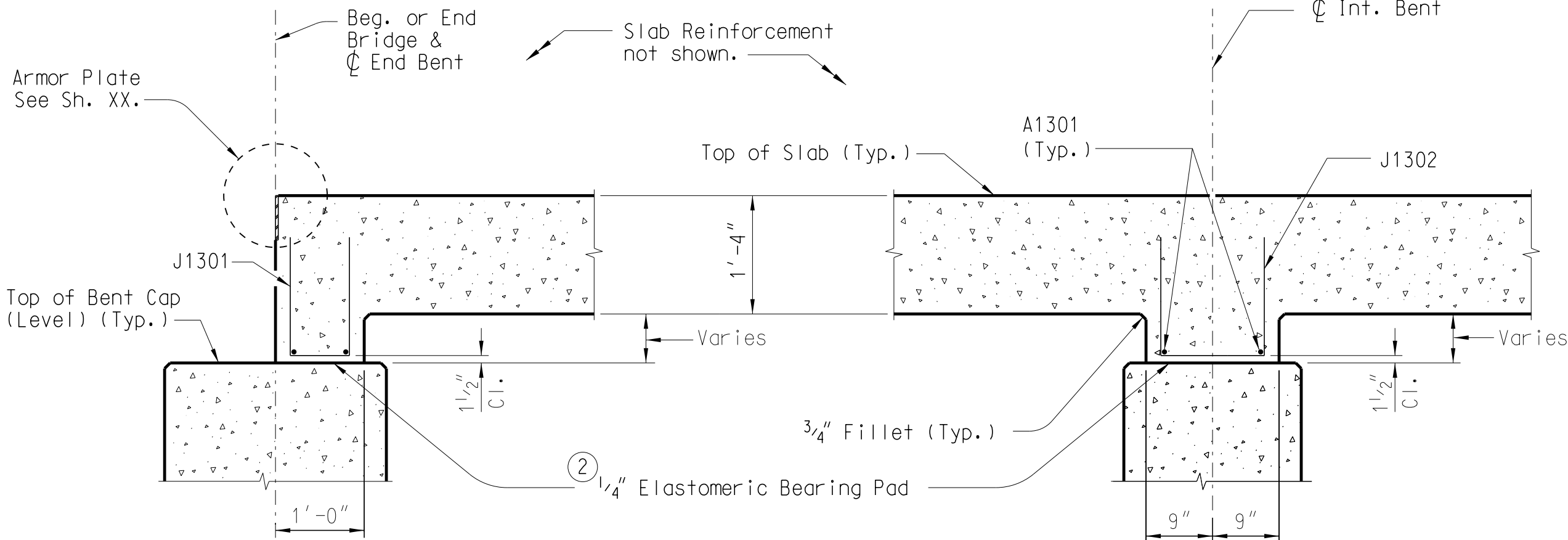


- Notes:
- Cast lower portion of wing walls monolithic with slab unless approved otherwise by RCE.
- UNO - Unless Noted Otherwise
- Provide drain pipes that are 6" nominal diameter Schedule 40 PVC Pipe meeting the requirements of ASTM D 1785 or 6" nominal diameter fiberglass pipe meeting the requirements of ASTM D 2996. Cement at least two lugs, of a size suitable to anchor the pipe, to the portion of the pipe embedded in the concrete slab. Include all costs of furnishing and placing drains in the unit price bid for Concrete for Structures, Class 4000.
 - 1/4" elastomeric bearing pad 60 Durometer hardness. Provide materials for elastomeric bearings that conform to Section 724 of the Standard Specifications. Provide a pad the same length and width of slab build-down. Place stock length pieces end to end provided that no individual piece is less than 6'-0" in length. Include all costs for furnishing and placing the pads in the unit price bid for Elastomeric Bearing Assembly (Flat Slab).
 - Provide 1/4" elastomeric bearing pad 60 Durometer hardness. Use materials for elastomeric bearings that conform to Section 724 of the Standard Specifications. Include all costs for furnishing and placing the pads in the unit price bid for Elastomeric Bearing Assembly (Flat Slab).
 - At ϕ Bent.
 - Includes 1/4" elastomeric bearing pad.
 - 3 eq. sp. = 1'-3 1/2"

SECTION THRU 74' SPAN
(Deck Drains Not Shown)



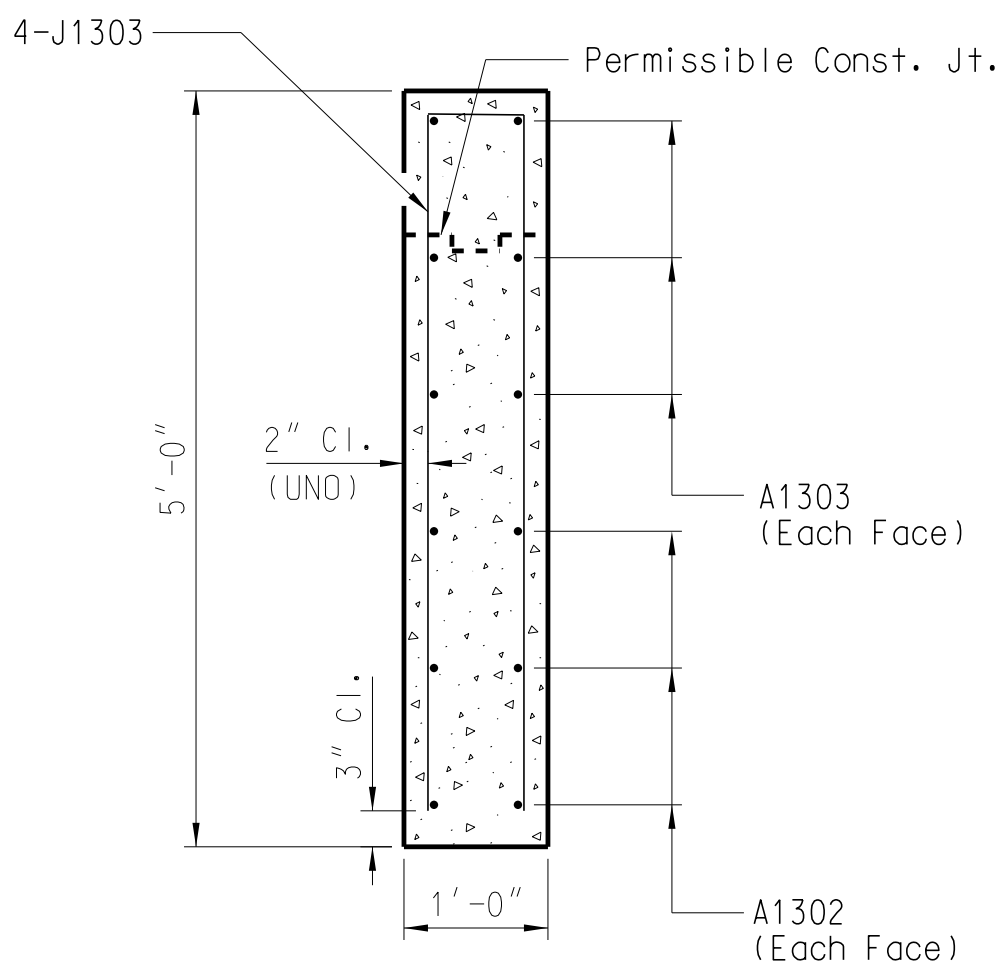
DRAIN DETAILS



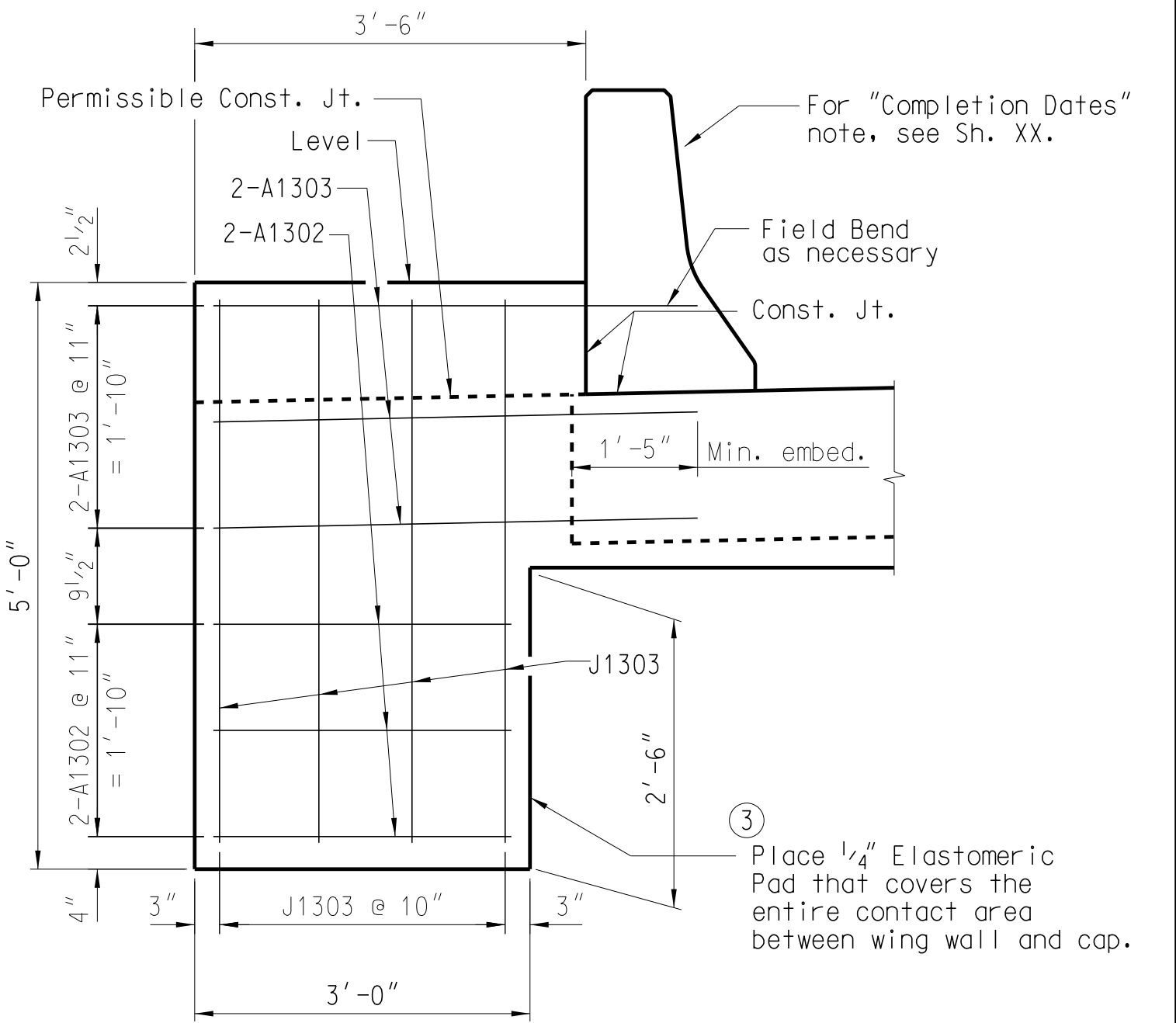
SECT. A-A
(At End Bents)

SECT. B-B
(At Interior Bents)

SLAB BUILD-DOWN DETAILS



SECTION THRU
WING WALL



WING WALL DETAILS

Note to Designer:

This drawing furnished for information only. All dimensions shown are sheet specific. Any use of this design and drawing, including dimensions, must be checked by the User's Engineer to ensure design is adequate for the intended use. All drawings must be signed and sealed by a South Carolina Registered Professional Engineer when used.

REV.				SOUTH CAROLINA			
REV.	PCW	LEM	3-18	DEPARTMENT OF TRANSPORTATION			
REV.	JXY	SAN	3-14	74'-0" SPAN UNIT			
REV.			New Border	SUPERSTRUCTURE			
REVIEWED				DETAILS			
QUAN.	JDC	BMH	9-11				
DR.	JDC	BMH	9-11				
DES.	JDC	BMH	9-11				
BY	CHK.	DATE		COUNTY	ROUTE		
				XXXXXXXX	XXXXXX		