

# TRAFFIC COUNT STATIONS TOWN OF BAMBERG BAMBERG COUNTY

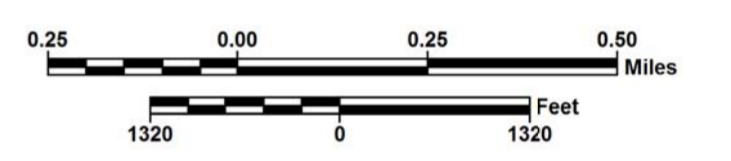
PREPARED BY THE  
**SOUTH CAROLINA DEPARTMENT OF TRANSPORTATION**  
IN COOPERATION WITH THE  
**U.S. DEPARTMENT OF TRANSPORTATION**  
**FEDERAL HIGHWAY ADMINISTRATION**

**JUNE 2017**

The South Carolina Department of Transportation makes no representations or warranties, implied or expressed, concerning the accuracy, completeness, reliability, or suitability, for any particular purpose of the information and data contained on this map or any information furnished in connection herewith.

For ordering information, please contact:  
South Carolina Department of Transportation  
Engineering Publications Sales Office  
955 Park Street - Room 122  
Columbia, SC 29201 (803) 737-4533  
E-mail: engrpubsales@scdot.org

For comments concerning this map, please contact:  
GIS/Mapping - (803) 737-3103



ROAD SYSTEM	
INTERSTATE	
U.S. ROUTE	
S.C. ROUTE	
SECONDARY ROUTE	
EXIT NUMBER	
INTERSTATE	
MULTI-LANE HIGHWAY	
TWO-LANE HIGHWAY	
DIVIDED HIGHWAY OR ROAD	
UNPAVED HIGHWAY	
PAVED COUNTY	
UNPAVED COUNTY	
PRIVATE	
RAILROAD	
GENERAL HIGHWAY BRIDGE	
BETWEEN 20' - 150'	
BRIDGES OVER 150' ARE SHOWN AT ACTUAL SCALE	

BOUNDARY & HYDROGRAPHY	
NARROW STREAM	
WIDE STREAM OR RIVER	
RESERVOIR, POND OR LAKE	
WETLAND OR MARSH	
STATE LINE	
COUNTY LINE	
INCORPORATED AREA	
EXTENT OF LARGE SCALE MAP	
MILITARY INSTALLATIONS AND GOVERNMENT INSTITUTIONS	
NATIONAL AND STATE FORESTS, STATE PARKS, AND NATIONAL WILDLIFE REFUGES	

MAP FEATURES	
PARK AND RIDE	
ARMORY	
CHURCH	
CEMETERY	
CHURCH AND CEMETERY	
AIRPORT COMPLETE FACILITIES	
SCDOT DISTRICT OFFICE / MAINTENANCE SHOP	
HOSPITAL	
SCHOOL	
POINT OF INTEREST	
COURTHOUSE	
WELCOME CENTER AND REST AREA	
AIRPORT LIMITED FACILITIES	

TRAFFIC COUNT STATION..... ▲  
TRAFFIC STATION NUMBER..... 111