

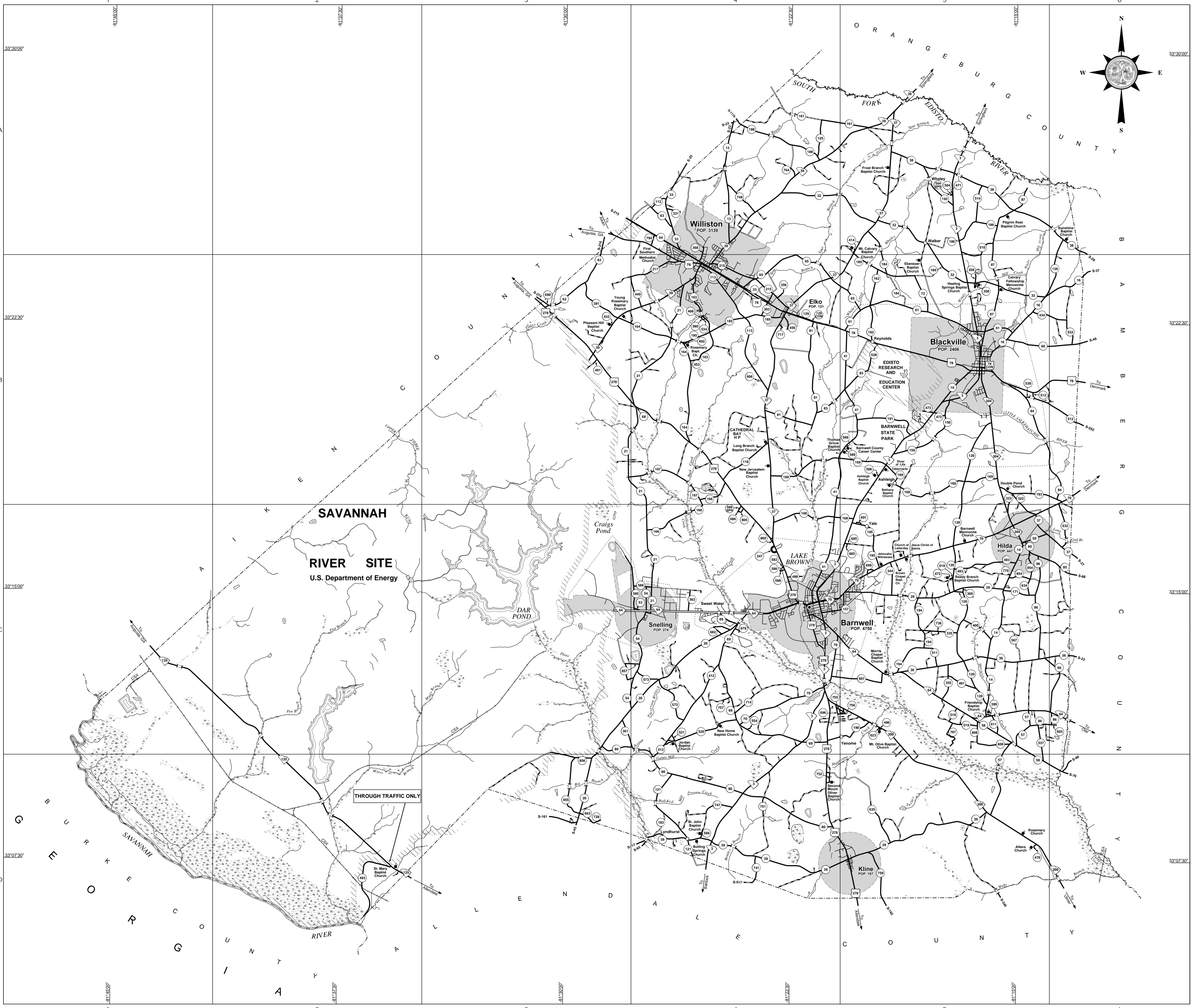
STATE MAINTAINED ROAD INDEX

US HIGHWAYS
 78 CON 85
 78 A4,B4,B5,B6
 278 B3,B4,C4,D4,D5

SC HIGHWAYS
 3 A5,B5,C4,C5,D4 70 B6,C4,C5
 37 A5,B4,B5,C4 135 C2,D2
 39 A4,A5,B3,B4 300 C4,C5,D5,D6
 64 C3,C4,C5,C6 304 B5,C5

SECONDARY ROADS

10	B5	623	C5
13	A4	632	C6
14	C5	634	C5
16	B5,B6	635	D5
20	C3,C4,D3	663	D3
21	B3,B4,C4	679	C4
29	C5	682	C4
32	A4,A5,B5	685	C5
33	A4,B4	686 SPR	C4
36	C5,C6	686	C4
37	C5,C6	690	B3
38	A5,A6	691	C5
39	D4,D5	695	C5
41	B4,B5,C4	696	C4,C5
53	C4	699	C5
54	C4	714	C4
57	C5,D5	717	B4
58	C5,D6	728	D3
59	C5	736 CH1	C5
60	B5,B6	736 CH2	C5
64	B5	741	D4
62	B3	747	D4
63	A4	748	A4
64	A4	751	D4
65	B4,B5	752	D4
66	B4	755	C4
69	C4	756	C5
70	C4	757	C4
72	B5	759	D5
80	C3,C4,D4	764	A4
81	B4	767	C5
83	B4,B5	770	C5
84	B5,B6	793	A4
85	C5,C6	794	A4
86	C5,C6	805	C4
87	A5,B5	854	C5
112	A4	855	D3
113	B4	856	C3,D3
116	B4	857	C3
120	B5,C5	860	C4
121	D4		
125	A4		
126	B6		
129 CON	B4		
129	B4		
150	B5		
157	C5		
161	A4,A5		
162	B5		
163	B4		
164	B4		
166	B4,C4		
167	B4		
168	C4,C5		
169	B4,B5		
171	C5		
183	D4		
184	A5,B5		
185	B4		
186	A5		
188	A4		
189	B5		
190	C5		
191	B5		
192	A5		
193	B5,B6		
194	C5		
195	C5		
215	B4		
217	B4		
303	B4		
322	C5		
323	B5		
331	A4		
335	C5		
344	C5		
355	C5		
356	B4		
358	B5		
360	C5		
361	C3		
363	C4		
368	A4		
381	B3		
398	C4		
399 CH1	C5		
400	C5		
401	C5		
408	B4		
412	C4		
414 CH1	A5		
432 CH1	B3		
434	B6		
449	B4		
453	B4		
456	B4		
461	B3		
470	D5		
471 CH1	A5		
472 CE1	C5		
473 CH1	C5		
473	B5		
480 CH1	C5		
483	C5		
488	C4		
493	D2		
504 SPR	A5		
504	A5		
506 CH1	B5		
510	A5		
511	C5		
512	B5,B6		
514	A5		
518	C5		
519	C5		
520	C4		
521	C4		
528	B5		
532	B6		
534	B4		
537	C5		
539	B5		
554 OTH	C4		
566	D4		
567	C5		
573	C4		
580	B4		
582	C4		
585	C3,C4		
586	C4		
588	C4		
589 SD1	B5		
589 SD2	B5		
602 CH1	B4		
603	C6		
606 CE1	B4		
607	C5		
608	C5		
611	C5		
613 CH1	C5		
623 CH1	C5		

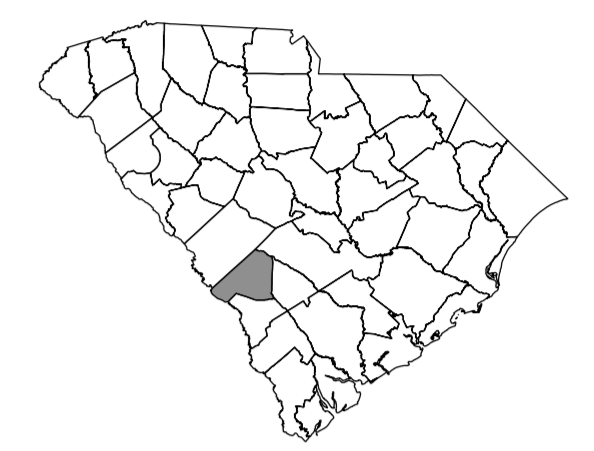


General Highway System BARNWELL COUNTY

South Carolina

PREPARED BY THE
SOUTH CAROLINA DEPARTMENT OF TRANSPORTATION
IN COOPERATION WITH THE
U.S. DEPARTMENT OF TRANSPORTATION
FEDERAL HIGHWAY ADMINISTRATION

JANUARY 2016



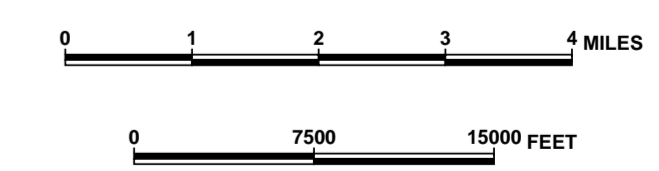
SIGNIFICANT FACTS
 EST. 1704
 NAMED FOR GENERAL JOHN BARNWELL,
 OF THE OLD BEAUFORT DISTRICT
 COUNTY POPULATION 2010 CENSUS 22,621
 COUNTY AREA IN SQUARE MILES 557

For ordering information, please contact:
 South Carolina Department of Transportation
 Engineering Publications Sales Office
 955 Park Street - Room 122
 Columbia, SC 29201 (803) 737-4533
 E-mail: engrpubsales@scdot.org

For comments concerning this map, please contact:
 GIS/Mapping - (803) 737-3103

LEGEND

- ROAD SYSTEM**
- INTERSTATE: 95
 - U.S. ROUTE: 17
 - S.C. ROUTE: 278
 - SECONDARY ROUTE: 101
 - EXT. 999
 - INTERSTATE: INCLUDE MULTILANE DIVIDED U.S. & S.C. PAVED UNPAVED
 - COUNTY: PAVED UNPAVED
 - PRIVATE: PAVED UNPAVED
 - ROADS CONTROLLED ON STATE SCALE: 1/2" = 1 MILE
 - RAILROADS
- BOUNDARIES**
- STATE LINE
 - COUNTY LINE
 - INCORPORATED AREA
 - EXTENT OF LARGE SCALE MAP
 - MULTI-STATE METERS AND GOVERNMENT INSTITUTIONS
 - NATIONAL AND STATE FORESTS
 - STATE PARKS AND NATIONAL WILDLIFE REFUGES
- HYDROGRAPHY**
- NARROW STREAM
 - WIDE STREAM OR RIVER
 - RESERVOIR, POND OR LAKE
 - WETLAND OR MARSH
- CITIES AND TOWNS**
- STATE CAPITAL
 - COUNTY SEAT
 - OTHER CITY OR LOCALITY
- MAP FEATURES**
- CHURCH
 - SCHOOL
 - PORT OF INTEREST
 - CORRECTIONAL INSTITUTION
 - CEMETERY
 - CHURCH AND CEMETERY
 - WELCOME CENTER
 - REST AREA
 - APPOINT COMPLETE FACILITIES
 - APPOINT LIMITED FACILITIES
 - SCDOT DISTRICT OFFICE
 - MAINTENANCE BRIDGE
 - GENERAL HIGHWAY BRIDGE
 - BRIDGES OVER 800' BY SHOWN ACTUAL LENGTH
 - FREIGHT



The South Carolina Department of Transportation makes no representations or warranties, implied or expressed, concerning the accuracy, completeness, reliability, or suitability, for any particular purpose of the information and data contained on this map or any information furnished in connection herewith.