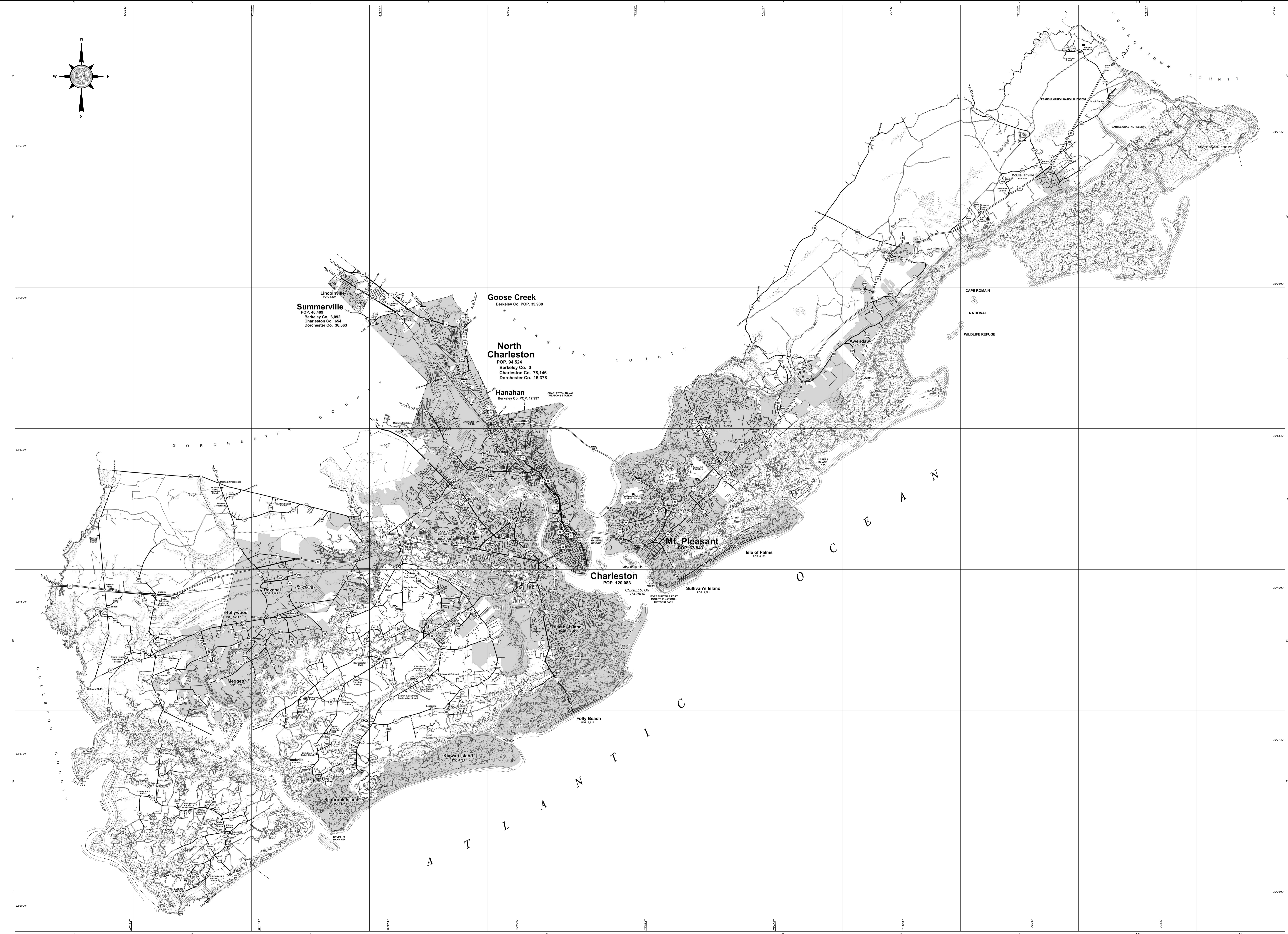
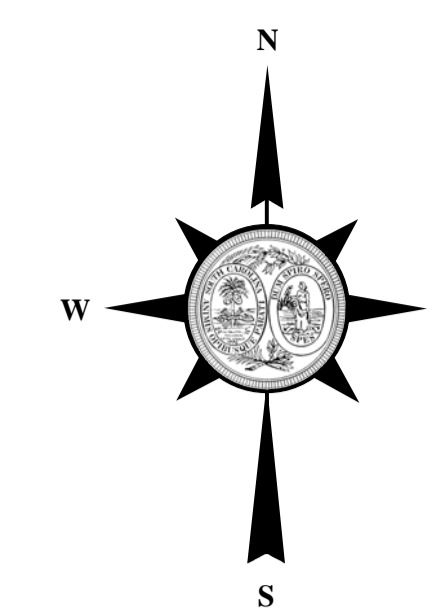


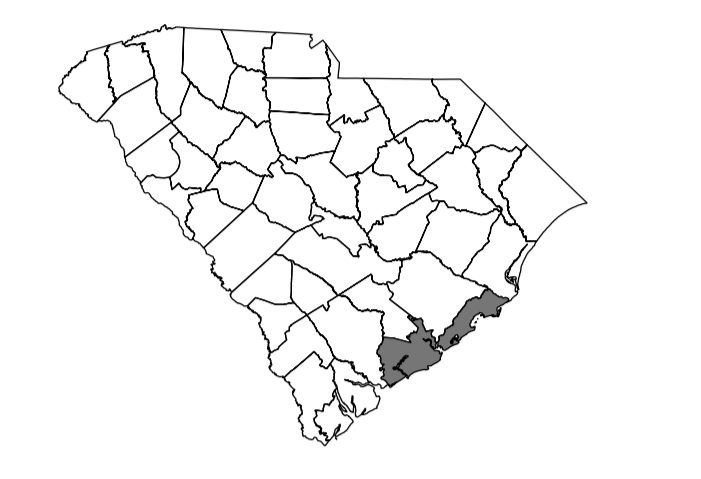
Table with multiple columns containing alphanumeric codes and names, likely a legend or index for the map's features.



General Highway System CHARLESTON COUNTY South Carolina

PREPARED BY THE
SOUTH CAROLINA DEPARTMENT OF TRANSPORTATION
IN COOPERATION WITH THE
U.S. DEPARTMENT OF TRANSPORTATION
FEDERAL HIGHWAY ADMINISTRATION

OCTOBER 2016



SIGNIFICANT FACTS
EST. 1793
NAMED FOR KING CHARLES II OF ENGLAND
COUNTY POPULATION 2010 CENSUS 350,209
COUNTY AREA IN SQUARE MILES 917

For ordering information, please contact:
South Carolina Department of Transportation
Engineering Planning & Safety Office
925 Park Street - Room 122
Columbia, SC 29201
E-mail: enrplsa@sdot.org
For comments concerning this map, please contact:
GIS/Mapping : (803) 737-3103

LEGEND

ROAD SYSTEM

- Interstate
- State
- County
- Local
- Private
- Proposed

BOUNDARIES

- County
- Township
- City
- Water
- Wetland
- Forest
- Woods
- Swamp
- Shrubland
- Grassland
- Barren
- Water
- Wetland
- Forest
- Woods
- Swamp
- Shrubland
- Grassland
- Barren

HYDROGRAPHY

- Major Waterway
- Waterway
- Stream
- Creek
- River
- Bay
- Harbor
- Canal
- Swamp
- Wetland
- Forest
- Woods
- Swamp
- Shrubland
- Grassland
- Barren

CITIES AND TOWNS

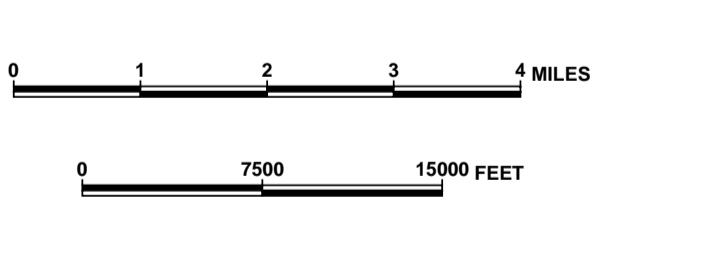
- City
- Town
- Village
- Hamlet
- Unincorporated Community

MAP FEATURES

- Point of Interest
- Landmark
- Historic Site
- Monument
- Memorial
- Statue
- Building
- Structure
- Other

NHS

- National Highway System



The South Carolina Department of Transportation makes no representation or warranty, binding or otherwise, concerning the accuracy, completeness, reliability, or suitability, for any particular purpose of the information and data contained on this map or any information furnished in connection herewith.