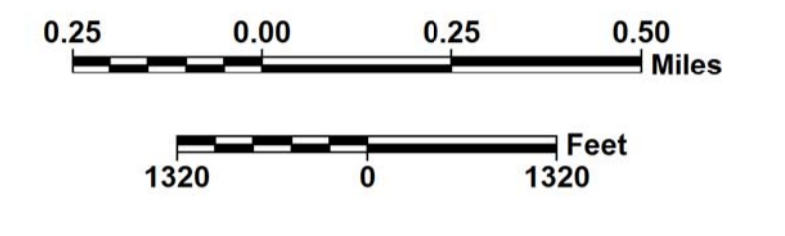


# TRAFFIC COUNT STATIONS CITY OF JOHNSONVILLE FLORENCE COUNTY

PREPARED BY THE  
**SOUTH CAROLINA DEPARTMENT OF TRANSPORTATION**  
IN COOPERATION WITH THE  
**U.S. DEPARTMENT OF TRANSPORTATION**  
**FEDERAL HIGHWAY ADMINISTRATION**

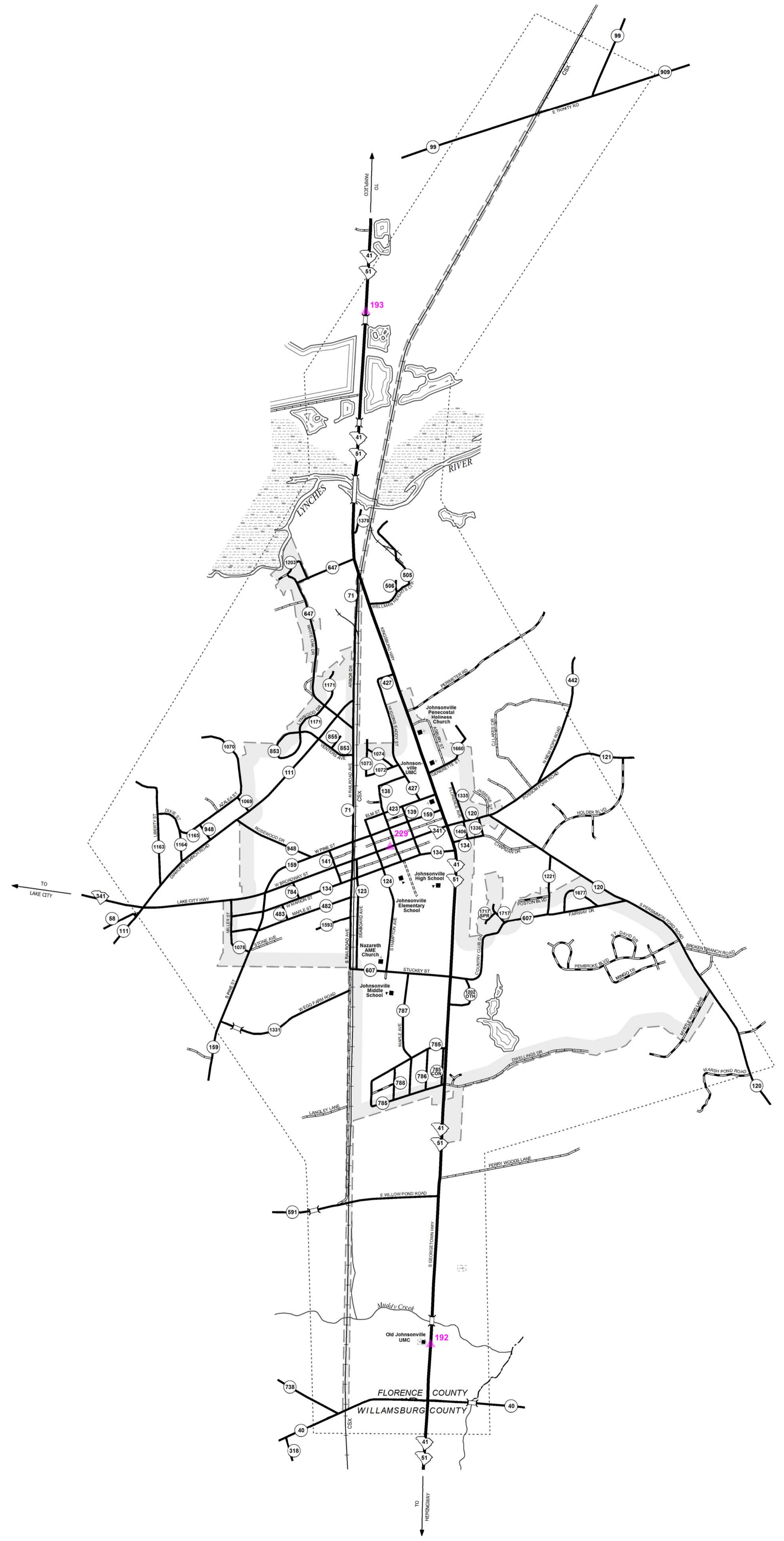
JUNE 2017



The South Carolina Department of Transportation makes no representations or warranties, implied or expressed, concerning the accuracy, completeness, reliability, or suitability, for any particular purpose of the information and data contained on this map or any information furnished in connection herewith.

For ordering information, please contact:  
**South Carolina Department of Transportation**  
**Engineering Publications Sales Office**  
955 Park Street - Room 122  
Columbia, SC 29201 (803) 737-4533  
E-mail: engrpubsales@scdot.org

For comments concerning this map, please contact:  
**GIS/Mapping - (803) 737-3103**  
E-mail: gismapping@scdot.org



### ROAD SYSTEM

- INTERSTATE ----- (989)
- U.S. ROUTE ----- (999)
- S.C. ROUTE ----- (989)
- SECONDARY ROUTE ----- (999)
- EXIT NUMBER ----- (999)
- INTERSTATE ----- (989)
- MULTI-LANE HIGHWAY -----
- TWO-LANE HIGHWAY -----
- DIVIDED HIGHWAYS & ROADS -----
- UNPAVED HIGHWAY -----
- PAVED COUNTY -----
- UNPAVED COUNTY -----
- PRIVATE -----
- RAILROAD -----
- GENERAL HIGHWAY BRIDGE (BETWEEN 20' - 150') -----
- BRIDGES OVER 150' ARE SHOWN AT ACTUAL SCALE

### BOUNDARY & HYDROGRAPHY

- NARROW STREAM -----
- WIDE STREAM OR RIVER -----
- RESERVOIR, POND OR LAKE -----
- WETLAND OR MARSH -----
- STATE LINE -----
- COUNTY LINE -----
- INCORPORATED AREA -----
- EXTENT OF LARGE SCALE MAP -----
- MILITARY INSTALLATIONS AND GOVERNMENT INSTITUTIONS -----
- NATIONAL AND STATE FORESTS, STATE PARKS, AND NATIONAL WILDLIFE REFUGES -----

### MAP FEATURES

- PARK AND RIDE -----
- ARMORY -----
- CHURCH -----
- CEMETERY -----
- CHURCH AND CEMETERY -----
- AIRPORT COMPLETE FACILITIES -----
- SCDOT DISTRICT OFFICE / MAINTENANCE SHOP -----
- HOSPITAL -----
- SCHOOL -----
- POINT OF INTEREST -----
- COURTHOUSE -----
- WELCOME CENTER AND REST AREA -----
- AIRPORT LIMITED FACILITIES -----

TRAFFIC COUNT STATION.....▲  
TRAFFIC STATION NUMBER.....111