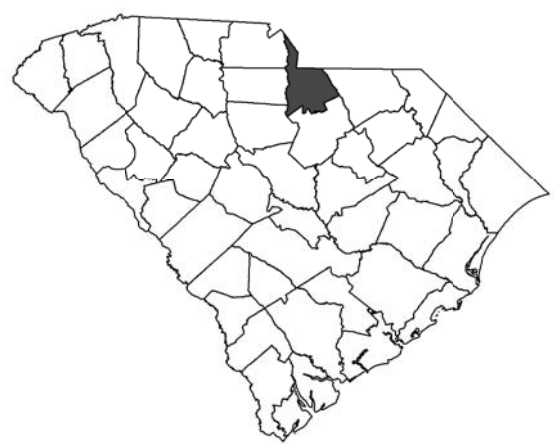


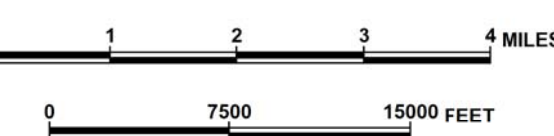
G TRAFFIC COUNT STATIONS LANCASTER COUNTY South Carolina

PREPARED BY THE
SOUTH CAROLINA DEPARTMENT OF TRANSPORTATION
IN COOPERATION WITH THE
U.S. DEPARTMENT OF TRANSPORTATION
FEDERAL HIGHWAY ADMINISTRATION

May 2016



SIGNIFICANT FACTS
EST. 1785
NAMED FOR LANCASTER COUNTY, PENNSYLVANIA
COUNTY POPULATION 2010 CENSUS 76,652
COUNTY AREA IN SQUARE MILES 549



LEGEND

- ROAD SYSTEM**
- INTERSTATE
 - U.S. ROUTE
 - S.C. ROUTE
 - SECONDARY ROUTE
 - EXT
 - INTERSTATE
 - U.S.S.C.
 - SECONDARY
 - PRIVATE
 - ROADS BORDERED ON LANCASTER SIDE
 - RAILROAD

- BOUNDARIES**
- STATE LINE
 - COUNTY LINE
 - EXTENT OF LARGE SCALE MAP
 - INCORPORATED AREA
 - MILITARY INSTALLATIONS AND GOVERNMENT INSTITUTIONS
 - NATIONAL AND STATE FORESTS
 - STATE PARKS AND NATIONAL WILDLIFE RESERVES

- HYDROGRAPHY**
- NARROW STREAM
 - WIDE STREAM OR RIVER
 - RESERVOIR, POND OR LAKE
 - WETLAND OR MARSH
- CITIES AND TOWNS**
- STATE CAPITAL
 - COUNTY SEAT
 - OTHER CITY OR LOCALITY

- MAP FEATURES**
- CHURCH
 - ARMORY
 - CORRECTIONAL INSTITUTION
 - CHURCH AND CEMETERY
 - COURTHOUSE
 - AIRPORT COMPLETE FACILITIES
 - AIRPORT LIMITED FACILITIES
 - SCDOT DISTRICT OFFICE
 - MAINTENANCE SHOP
 - GENERAL HIGHWAY BRIDGE (SEE TRUCKS OR 400)
 - BRIDGE'S OVER 800 SHOWS ACTUAL LENGTH

- MAP FEATURES**
- HOSPITAL
 - SCHOOL
 - POINT OF INTEREST
 - CEMETERY
 - WELCOME CENTER AND REST AREA

For ordering information, please contact:
South Carolina Department of Transportation
Engineering Publications Sales Office
955 Park Street - Room G-198
Columbia, SC 29201 (803) 737-4533
E-mail: engrpubsales@scdot.org

For comments concerning this map, please contact:
GIS/Mapping - (803) 737-1677

The South Carolina Department of Transportation makes no representations or warranties, implied or expressed, concerning the accuracy, completeness, reliability, or suitability, for any particular purpose of the information and data contained on this map or any information furnished in connection herewith.

TRAFFIC COUNT STATIONS.....▲
TRAFFIC STATION NUMBER.....111