

STATE MAINTAINED ROAD KEYS

INTERSTATES		BUS ROUTES	
26	CA, CL, CR, CS	76	CL, CL, CL, CL, CL, CL
25	CI, CL, CR, CS	221	BA, CL, CL, CL, CL, CL
78	BL, BU, CU		
BYPASSES		BUS ROUTES	
28	CA, CL, CR, CS	72	CL, CR, CL, CR, CL, CR
48	BA, CA, CI, CL, CR, CS	72	CL, CR, CL, CR, CL, CR
66	BL, BU, CU, CV, CW, CX, CY, CZ	82	BL, BU, CU, CV, CW, CX, CY, CZ
86	CA, CL, CR, CS	418	KA, LA, LB, LC, LD, LE, LF, LG, LH, LI, LJ, LK, LL, LM, LN, LO, LP, LQ, LR, LS, LT, LU, LV, LW, LX, LY, LZ
88	CA, CL, CR, CS	88	CA, CL, CR, CS
88	CA, CL, CR, CS	88	CA, CL, CR, CS
SECONDARY ROADS			
3	CL, CR, CS	33	CL, CR, CS
4	CL, CR, CS	34	CL, CR, CS
5	CL, CR, CS	35	CL, CR, CS
6	CL, CR, CS	36	CL, CR, CS
7	CL, CR, CS	37	CL, CR, CS
8	CL, CR, CS	38	CL, CR, CS
9	CL, CR, CS	39	CL, CR, CS
10	CL, CR, CS	40	CL, CR, CS
11	CL, CR, CS	41	CL, CR, CS
12	CL, CR, CS	42	CL, CR, CS
13	CL, CR, CS	43	CL, CR, CS
14	CL, CR, CS	44	CL, CR, CS
15	CL, CR, CS	45	CL, CR, CS
16	CL, CR, CS	46	CL, CR, CS
17	CL, CR, CS	47	CL, CR, CS
18	CL, CR, CS	48	CL, CR, CS
19	CL, CR, CS	49	CL, CR, CS
20	CL, CR, CS	50	CL, CR, CS
21	CL, CR, CS	51	CL, CR, CS
22	CL, CR, CS	52	CL, CR, CS
23	CL, CR, CS	53	CL, CR, CS
24	CL, CR, CS	54	CL, CR, CS
25	CL, CR, CS	55	CL, CR, CS
26	CL, CR, CS	56	CL, CR, CS
27	CL, CR, CS	57	CL, CR, CS
28	CL, CR, CS	58	CL, CR, CS
29	CL, CR, CS	59	CL, CR, CS
30	CL, CR, CS	60	CL, CR, CS
31	CL, CR, CS	61	CL, CR, CS
32	CL, CR, CS	62	CL, CR, CS
33	CL, CR, CS	63	CL, CR, CS
34	CL, CR, CS	64	CL, CR, CS
35	CL, CR, CS	65	CL, CR, CS
36	CL, CR, CS	66	CL, CR, CS
37	CL, CR, CS	67	CL, CR, CS
38	CL, CR, CS	68	CL, CR, CS
39	CL, CR, CS	69	CL, CR, CS
40	CL, CR, CS	70	CL, CR, CS
41	CL, CR, CS	71	CL, CR, CS
42	CL, CR, CS	72	CL, CR, CS
43	CL, CR, CS	73	CL, CR, CS
44	CL, CR, CS	74	CL, CR, CS
45	CL, CR, CS	75	CL, CR, CS
46	CL, CR, CS	76	CL, CR, CS
47	CL, CR, CS	77	CL, CR, CS
48	CL, CR, CS	78	CL, CR, CS
49	CL, CR, CS	79	CL, CR, CS
50	CL, CR, CS	80	CL, CR, CS
51	CL, CR, CS	81	CL, CR, CS
52	CL, CR, CS	82	CL, CR, CS
53	CL, CR, CS	83	CL, CR, CS
54	CL, CR, CS	84	CL, CR, CS
55	CL, CR, CS	85	CL, CR, CS
56	CL, CR, CS	86	CL, CR, CS
57	CL, CR, CS	87	CL, CR, CS
58	CL, CR, CS	88	CL, CR, CS
59	CL, CR, CS	89	CL, CR, CS
60	CL, CR, CS	90	CL, CR, CS
61	CL, CR, CS	91	CL, CR, CS
62	CL, CR, CS	92	CL, CR, CS
63	CL, CR, CS	93	CL, CR, CS
64	CL, CR, CS	94	CL, CR, CS
65	CL, CR, CS	95	CL, CR, CS
66	CL, CR, CS	96	CL, CR, CS
67	CL, CR, CS	97	CL, CR, CS
68	CL, CR, CS	98	CL, CR, CS
69	CL, CR, CS	99	CL, CR, CS
70	CL, CR, CS	100	CL, CR, CS

TRAFFIC COUNT STATIONS

LAURENS COUNTY

South Carolina

PREPARED BY THE
SOUTH CAROLINA DEPARTMENT OF TRANSPORTATION
IN COOPERATION WITH THE
U.S. DEPARTMENT OF TRANSPORTATION
FEDERAL HIGHWAY ADMINISTRATION

July 2016



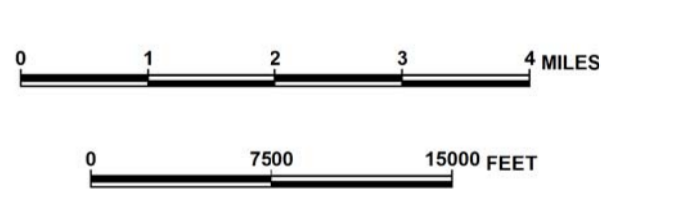
SIGNIFICANT FACTS
EST. 1785
NAMED FOR REVOLUTIONARY WAR LEADER HENRY LAURENS
COUNTY POPULATION 2010 CENSUS 66,537
COUNTY AREA IN SQUARE MILES 715

For ordering information, please contact:
South Carolina Department of Transportation
Engineering Publications Sales Office
955 Park Street - Room 122
Columbia, SC 29201 (803) 737-4533
E-mail: engrpubsales@scdot.org

For comments concerning this map, please contact:
GIS/Mapping - (803) 737-3103

LEGEND

- ROAD SYSTEM**
 - INTERSTATE
 - U.S. ROUTE
 - STATE ROUTE
 - REGULATED ROUTE
 - EXT.
 - BYPASS
 - UNIMPROVED ROAD
 - ROAD GRADING IN LAURENS COUNTY
 - PAVED ROAD
 - UNPAVED ROAD
- BOUNDARIES**
 - COUNTY LINE
 - INCORPORATED AREA
 - UNINCORPORATED AREA
 - REGULATED ROUTE
 - UNIMPROVED ROAD
 - ROAD GRADING IN LAURENS COUNTY
 - PAVED ROAD
 - UNPAVED ROAD
- HYDROGRAPHY**
 - WATERWAY
 - WELL
 - RESERVOIR
 - WATERWAY DAM
 - WATERWAY BRIDGE
 - WATERWAY TUNNEL
 - WATERWAY DIVERSION
 - WATERWAY PUMP STATION
 - WATERWAY VALVE
 - WATERWAY CONTROL STRUCTURE
 - WATERWAY WEIR
 - WATERWAY BARRAGE
 - WATERWAY LOCK
 - WATERWAY DAM
 - WATERWAY BRIDGE
 - WATERWAY TUNNEL
 - WATERWAY DIVERSION
 - WATERWAY PUMP STATION
 - WATERWAY VALVE
 - WATERWAY CONTROL STRUCTURE
 - WATERWAY WEIR
 - WATERWAY BARRAGE
 - WATERWAY LOCK
- CITIES AND TOWNS**
 - CITY
 - TOWN
 - UNINCORPORATED AREA
 - REGULATED ROUTE
 - UNIMPROVED ROAD
 - ROAD GRADING IN LAURENS COUNTY
 - PAVED ROAD
 - UNPAVED ROAD
- MAP FEATURES**
 - CHURCH
 - AMBIENT
 - RESTRICTION
 - TRUCK STOP
 - WELCOME CENTER
 - APPROXIMATE
 - REGULATED ROUTE
 - UNIMPROVED ROAD
 - ROAD GRADING IN LAURENS COUNTY
 - PAVED ROAD
 - UNPAVED ROAD
- TRAFFIC COUNT STATIONS**
 - TRAFFIC STATION NUMBER



The South Carolina Department of Transportation makes no representations or warranties, implied or expressed, concerning the accuracy, completeness, reliability, or suitability, for any particular purpose of the information and data contained on this map or any information furnished in connection herewith.