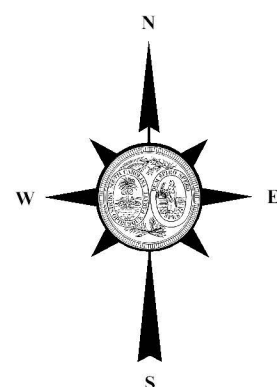
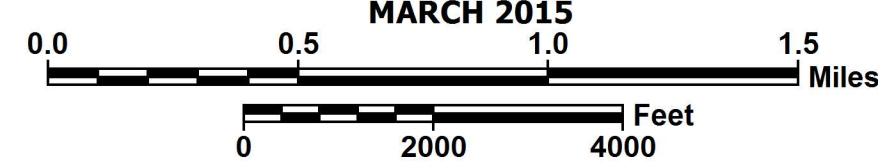


**Functional Classification
SHEET 3**

SUMTER URBANIZED AREA

SUMTER COUNTY
PREPARED BY THE
SOUTH CAROLINA DEPARTMENT OF TRANSPORTATION
IN COOPERATION WITH THE
U.S. DEPARTMENT OF TRANSPORTATION
FEDERAL HIGHWAY ADMINISTRATION
MARCH 2015



- Legend**
- Interstates
 - Freeways / Expressways
 - Principle Arterials
 - Minor Arterials
 - Major Collectors
 - Minor Collectors
 - Proposed Routes
(Shown Dashed in Color of Functional Classification)
 - Urban Areas

ROAD SYSTEM

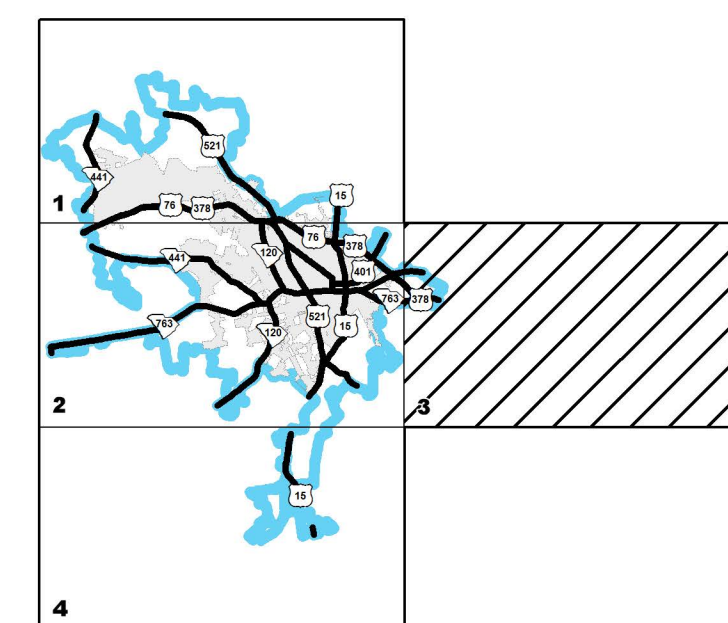
- INTERSTATE
- U.S. ROUTE
- S.C. ROUTE
- SECONDARY ROUTE
- INTERSTATE
- U.S. & S.C. TWO-LANE MULTILANE-DIVIDED
- SECONDARY PAVED
- SECONDARY UNPAVED
- COUNTY PAVED
- COUNTY UNPAVED
- PRIVATE UNPAVED
- RAILROAD

BOUNDARY & HYDROGRAPHY

- NARROW STREAM
- WIDE STREAM OR RIVER
- RESERVOIR, POND OR LAKE
- WETLAND OR MARSH
- STATE LINE
- COUNTY LINE
- INCORPORATED AREA
- MILITARY INSTALLATIONS AND GOVERNMENT INSTITUTIONS
- NATIONAL AND STATE FORESTS, STATE PARKS, AND NATIONAL WILDLIFE REFUGES

MAP FEATURES

- PARK AND RIDE
- ARMORY
- CHURCH AND CEMETERY
- COURTHOUSE
- AIRPORT COMPLETE FACILITIES
- AIRPORT LIMITED FACILITIES
- SCDOT DISTRICT OFFICE / MAINTENANCE SHOP
- HOSPITAL
- SCHOOL
- POINT OF INTEREST
- CEMETERY
- WELCOME CENTER AND REST AREA
- AIRPORT LIMITED FACILITIES



Approved
For Division Administrator

By:
Federal Highway Administration