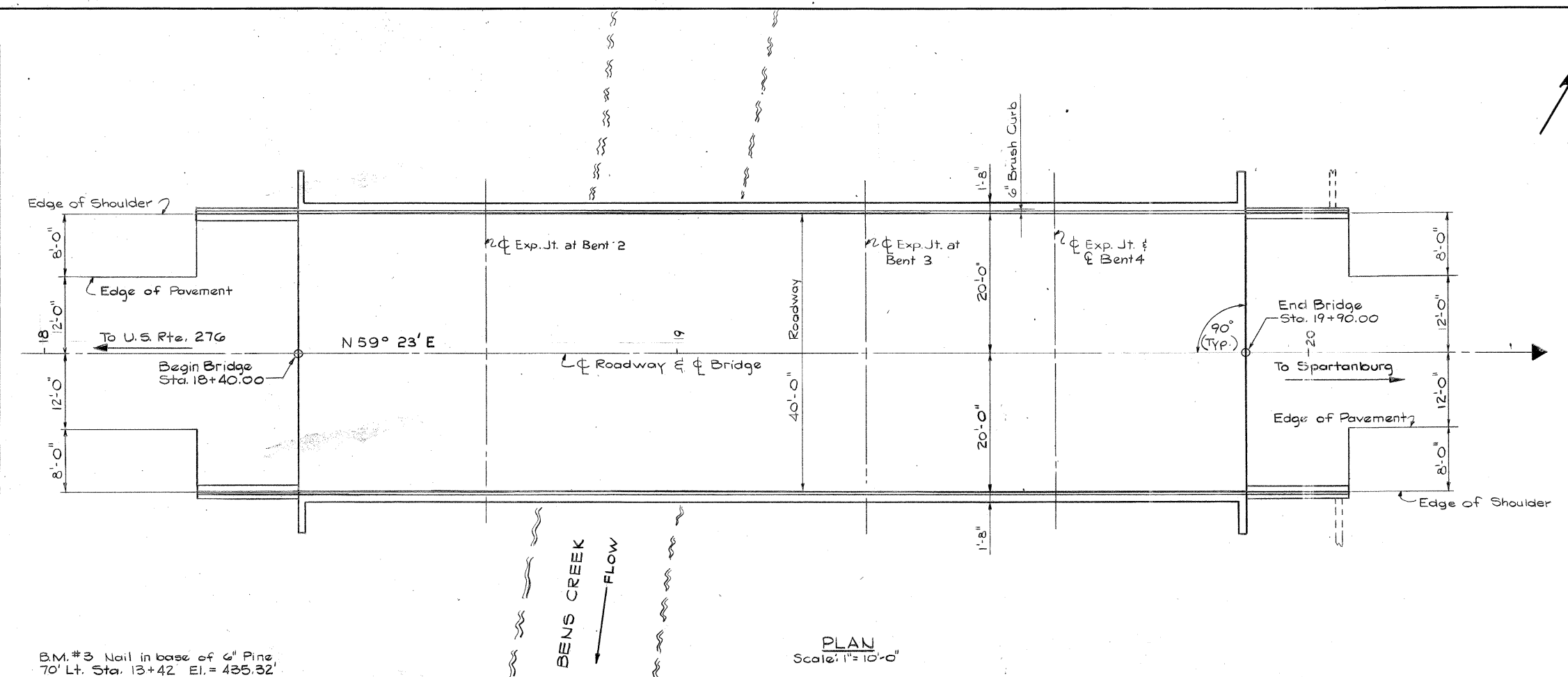
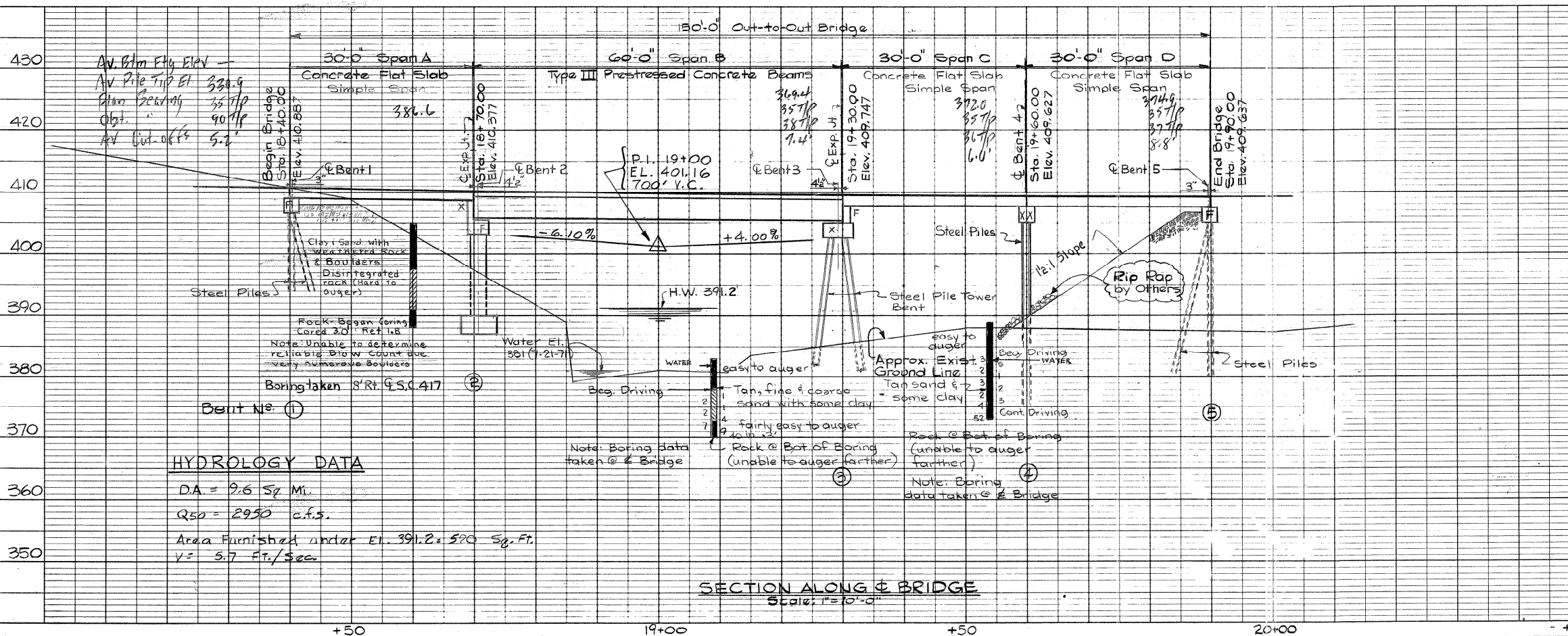


FED. RD. DIV. NO.	STATE	COUNTY	FILE NO.	ROUTE NO.	SHEET NO.	TOTAL SHEETS
3	S.C.	SPARTANBURG	42.735	S.C.417	12	28



B.M. #3 Nail in base of 6" Pine  
70' Lt. Sta. 13+42 El. = 435.32'

B.M. #5 Nail in base of 14" Oak  
50' Lt. Sta. 23+25 El. = 412.53'



**HYDROLOGY DATA**  
 DA = 9.6 Sq. Mi.  
 Q50 = 2950 c.f.s.  
 Area Furnished under El. 391.2 = 520 Sq. Ft.  
 V = 5.7 Ft./Sec

**NOTES:**  
 Live Load HS 20-44  
 For Standard Notes see Sheet No. 2.  
 For Standard Details see Sheets No. 3 & 4.  
 Construct curb & gutter on each side of roadway at both ends of bridge.  
 For Summary of Quantities, see Sheet No. 13.  
 The existing bridge shall be removed by the contractor see special provisions.

REV.			
REV.			
REV.			
REV.			
REVIEWED	RLW		
IN CHARGE			
QUAN.			
TR.			
DR.	JEL	JLD	11-73
DES.	HDJ	JSL	11-73
BY	CHK'D	DATE	

FILE NO.	COUNTY	ROUTE NO.	DATE
42.735	SPARTANBURG	S.C. 417	12-73

APPROVED BY  
*(Signature)*  
 BRIDGE ENGINEER-DESIGN

APPROVED BY  
*(Signature)*  
 BRIDGE ENGINEER-DESIGN

**SECTION ALONG & BRIDGE**  
 Scale: 1"=10'-0"