

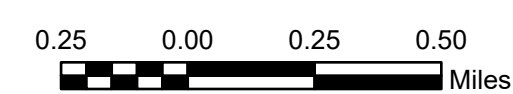
FUNCTIONAL CLASSIFICATION

SHEET 1

CAMDEN URBAN AREA

PREPARED BY THE
SOUTH CAROLINA DEPARTMENT OF TRANSPORTATION
 IN COOPERATION WITH THE
U.S. DEPARTMENT OF TRANSPORTATION
FEDERAL HIGHWAY ADMINISTRATION

October 2025



URBAN FUNCTIONAL CLASSIFICATION

- INTERSTATES [Blue line]
- FREEWAYS & EXPRESSWAYS [Brown line]
- PRINCIPLE ARTERIALS [Red line]
- MINOR ARTERIALS [Green line]
- MAJOR COLLECTORS [Purple line]
- MINOR COLLECTORS [Yellow line]
- PROPOSED ROUTES [Dashed line in color of Functional Classification]

ROAD SYSTEM

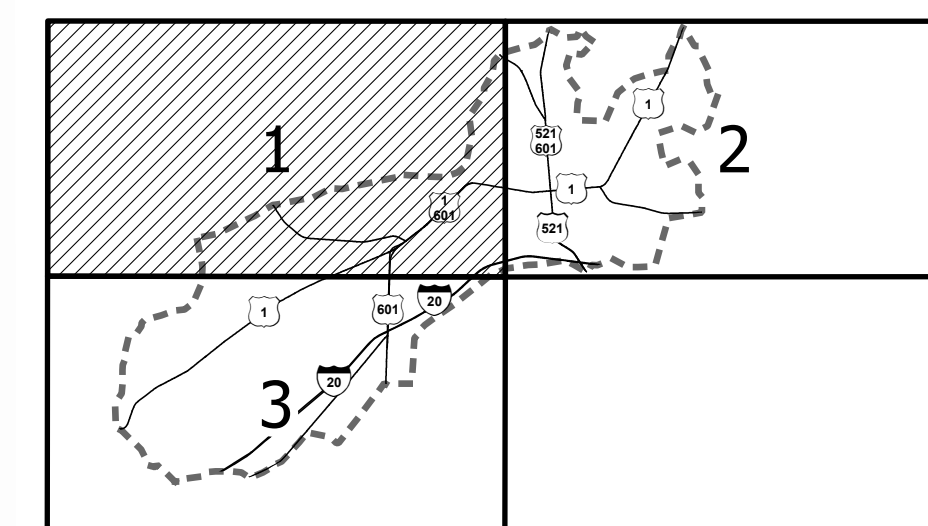
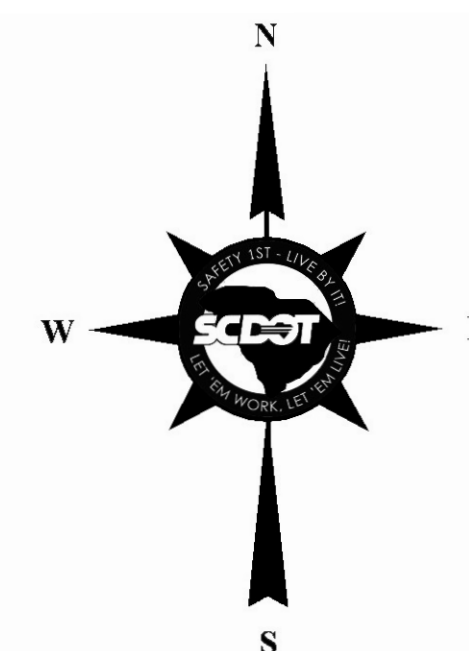
- INTERSTATE [Shield with 999]
- U.S. ROUTE [Shield with 995]
- S.C. ROUTE [Shield with 999]
- SECONDARY ROUTE [Shield with 999]
- EXIT NUMBER [Shield with 999]
- LOCAL ROUTE [Shield with L-999]
- INTERSTATE [Thick double line]
- MULTI-LANE HIGHWAY [Thick single line]
- TWO-LANE HIGHWAY [Thin double line]
- DIVIDED HIGHWAY [Thin double line with center line]
- UNPAVED HIGHWAY [Thin single line]
- PAVED COUNTY [Thick dashed line]
- UNPAVED COUNTY [Thin dashed line]
- PRIVATE [Thin dotted line]

HYDROGRAPHY

- RIVER [Blue wavy line]
- LAKES [Blue irregular shape]

BOUNDARY

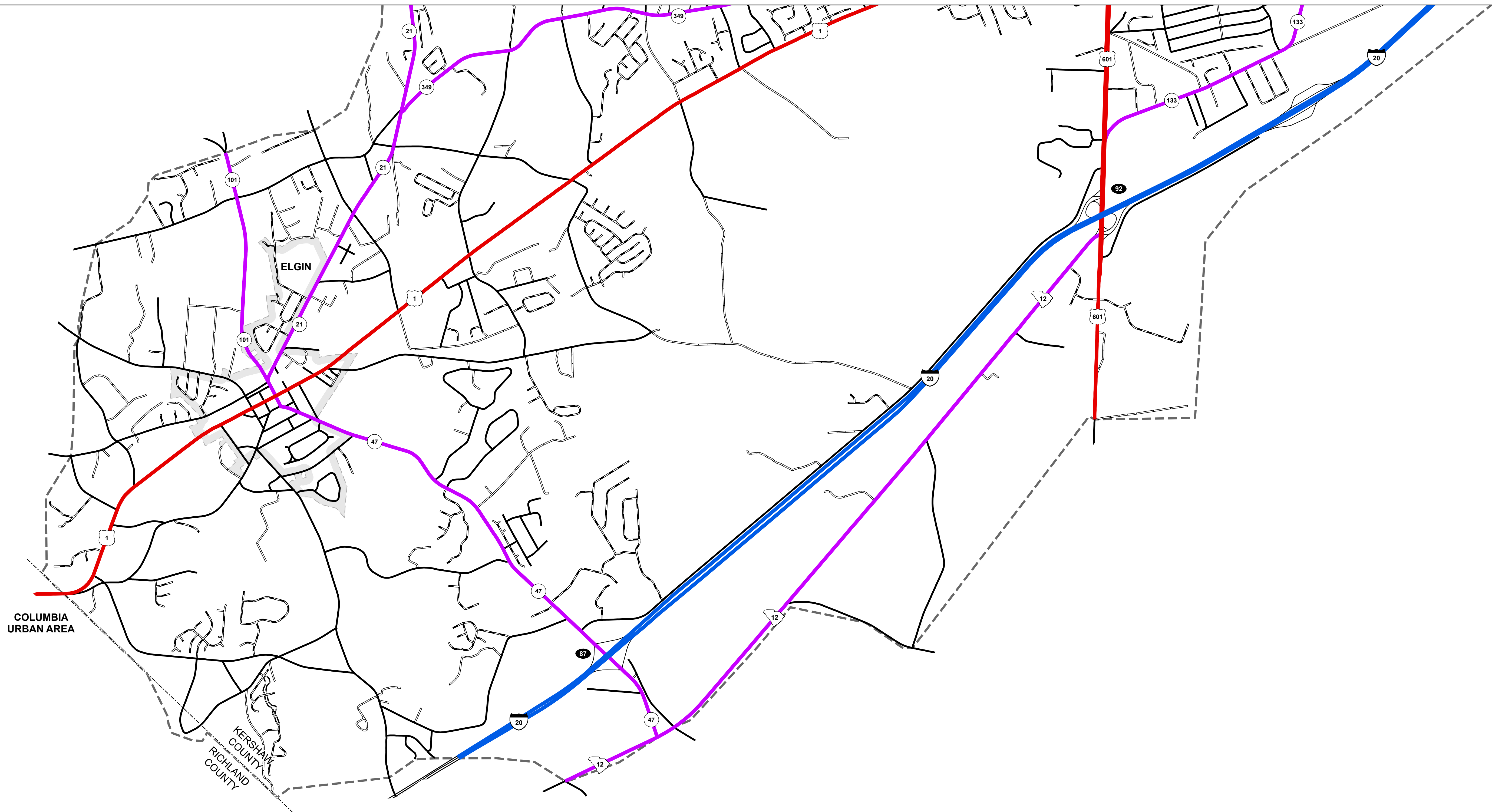
- STATE LINE [Dashed line]
- COUNTY LINE [Dotted line]
- URBAN AREA [Dashed line]
- GOVERNMENT PROPERTY [Hatched area]
- MUNICIPAL AREAS [Dotted area]



Approved
 For Division Administrator

By:

Federal Highway Administration



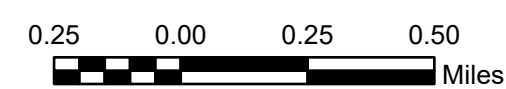
FUNCTIONAL CLASSIFICATION

SHEET 3

CAMDEN URBAN AREA

PREPARED BY THE
SOUTH CAROLINA DEPARTMENT OF TRANSPORTATION
 IN COOPERATION WITH THE
U.S. DEPARTMENT OF TRANSPORTATION
FEDERAL HIGHWAY ADMINISTRATION

October 2025



URBAN FUNCTIONAL CLASSIFICATION

- INTERSTATES - - - - - Blue line
- FREEWAYS & EXPRESSWAYS - - - - - Brown line
- PRINCIPLE ARTERIALS - - - - - Red line
- MINOR ARTERIALS - - - - - Green line
- MAJOR COLLECTORS - - - - - Purple line
- MINOR COLLECTORS - - - - - Yellow line
- PROPOSED ROUTES - - - - - Dashed in color of Functional Classification

ROAD SYSTEM

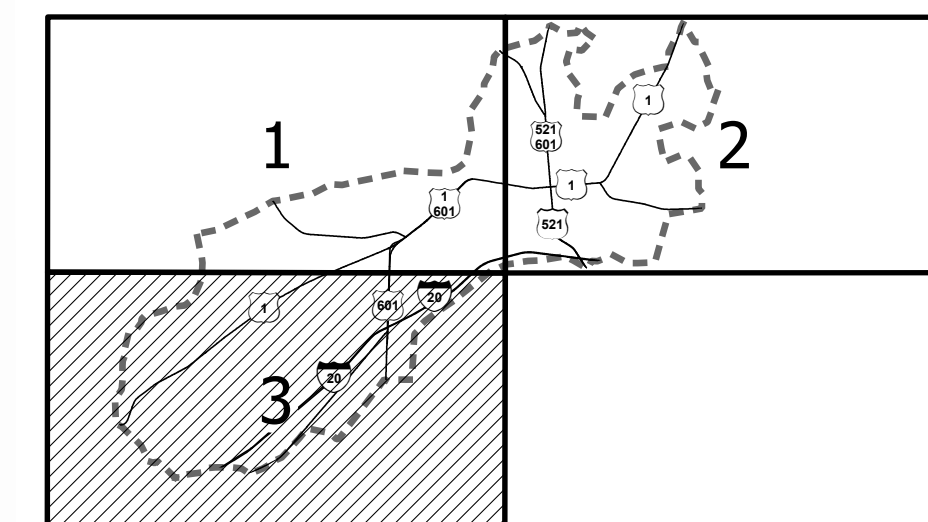
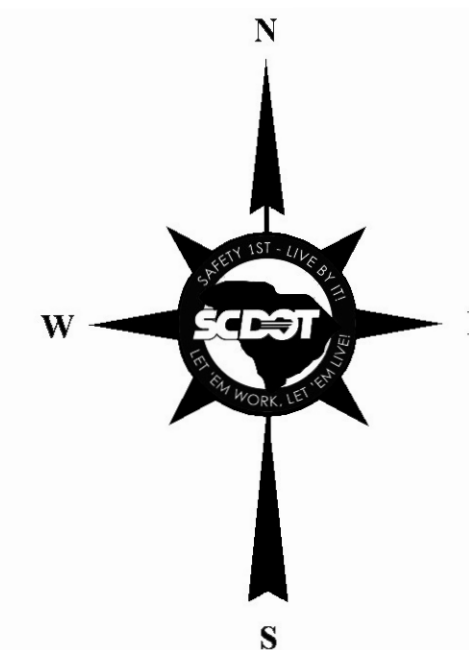
- INTERSTATE - - - - - Interstate shield
- U.S. ROUTE - - - - - U.S. Route shield
- S.C. ROUTE - - - - - S.C. Route shield
- SECONDARY ROUTE - - - - - Secondary Route shield
- EXIT NUMBER - - - - - Exit shield
- LOCAL ROUTE - - - - - Local Route shield
- INTERSTATE - - - - - L-999
- MULTI-LANE HIGHWAY - - - - - Double line
- TWO-LANE HIGHWAY - - - - - Single line
- DIVIDED HIGHWAY - - - - - Line with center divider
- UNPAVED HIGHWAY - - - - - Dashed line
- PAVED COUNTY - - - - - Line with cross-hatch
- UNPAVED COUNTY - - - - - Dashed line with cross-hatch
- PRIVATE - - - - - Dotted line

HYDROGRAPHY

- RIVER - - - - - Blue wavy line
- LAKES - - - - - Blue irregular shape

BOUNDARY

- STATE LINE - - - - - Dashed line
- COUNTY LINE - - - - - Dotted line
- URBAN AREA - - - - - Dashed line
- GOVERNMENT PROPERTY - - - - - Line with cross-hatch
- MUNICIPAL AREAS - - - - - Line with cross-hatch



Approved
 For Division Administrator

By:

Federal Highway Administration