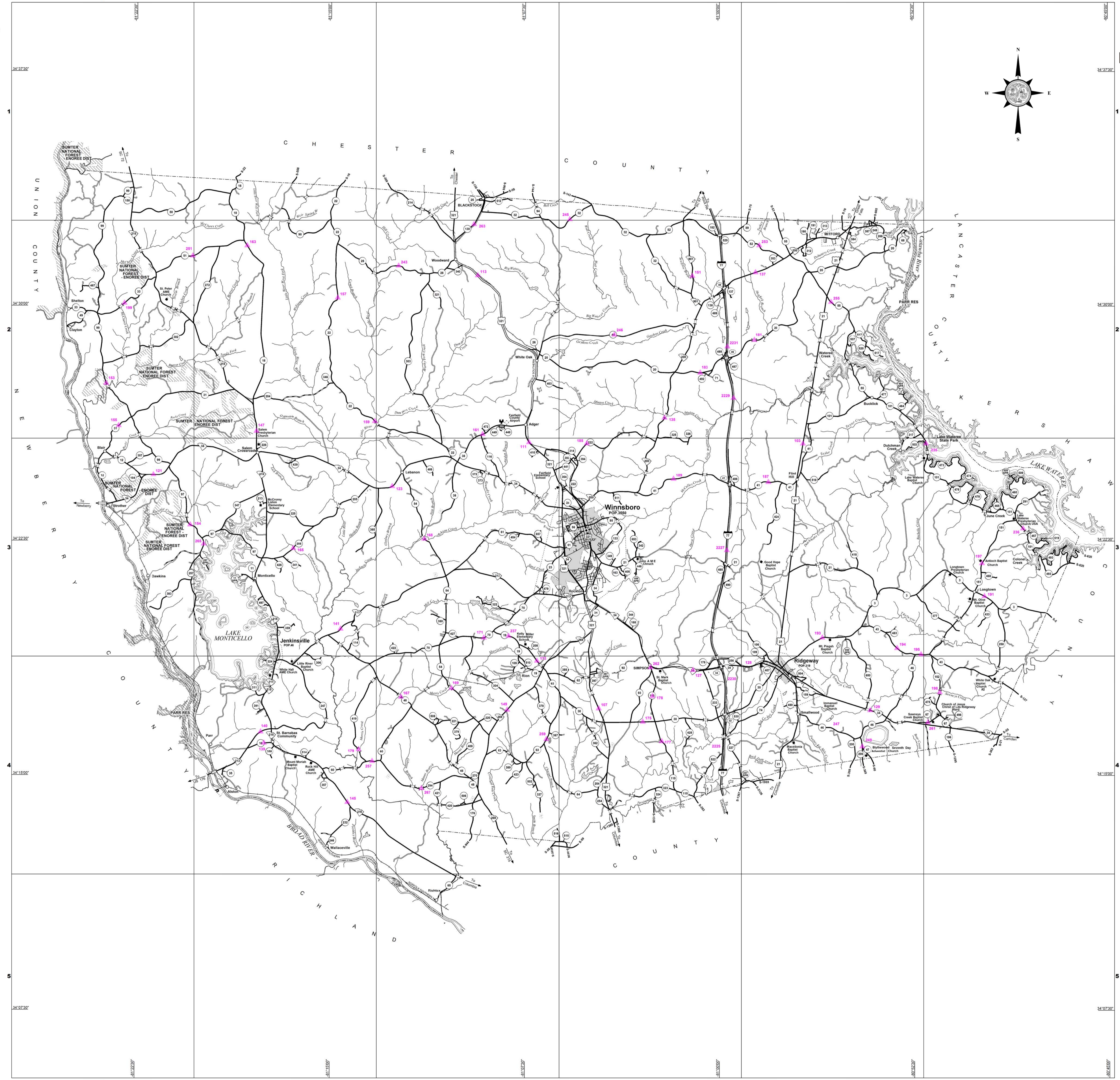
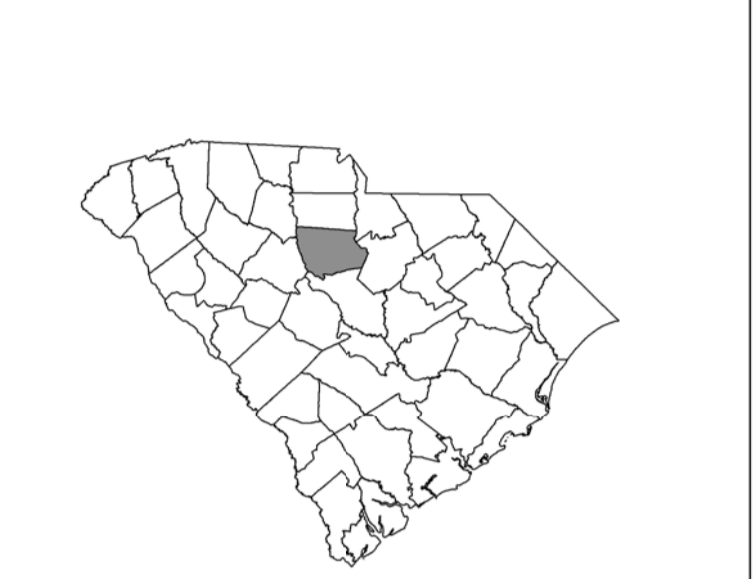


Table listing secondary roads with columns for road name, route number, and location (e.g., WINNSBORO, PARKERSBURG, etc.).



TRAFFIC COUNT STATIONS
FAIRFIELD COUNTY
South Carolina

PREPARED BY THE
SOUTH CAROLINA DEPARTMENT OF TRANSPORTATION
IN COOPERATION WITH THE
U.S. DEPARTMENT OF TRANSPORTATION
FEDERAL HIGHWAY ADMINISTRATION
October 2015

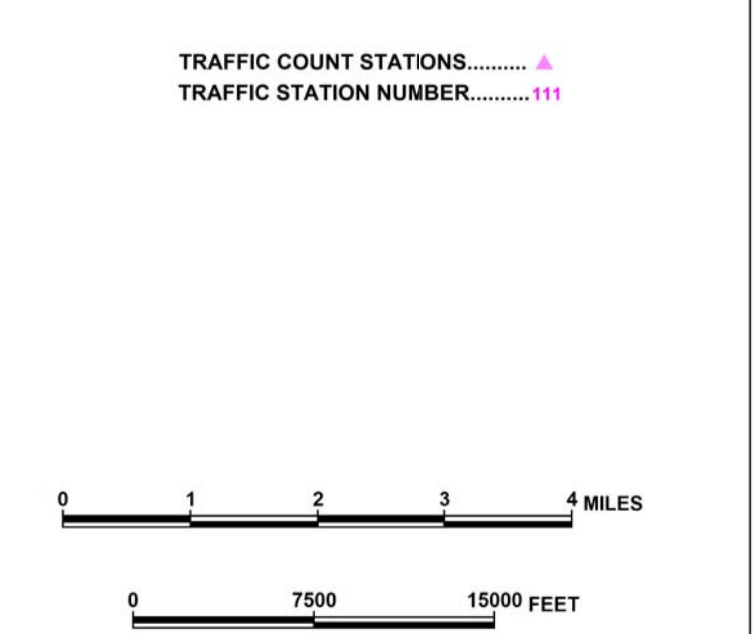


SIGNIFICANT FACTS
EST. 1785
NAMED FROM A STATEMENT "HOW FAIR THESE FIELDS" BY
GENERAL CORNWALLIS
COUNTY POPULATION 2010 CENSUS 23,956
COUNTY AREA IN SQUARE MILES 687

For ordering information, please contact:
South Carolina Department of Transportation
Engineering Publications Sales Office
955 Park Street - Room 122
Columbia, SC 29201 (803) 737-4533
Columbia, SC 29201 e-mail: engrpubsales@scdot.org
For comments concerning this map, please contact:
GIS/Mapping - (803) 737-3103

LEGEND

- ROAD SYSTEM: U.S. HIGHWAY, U.S. & S.C. HIGHWAY, INTERSTATE, SECONDARY ROUTE, COUNTY, PRIVATE, RAILROAD
- BOUNDARIES: STATE LINE, COUNTY BOUNDARY, HOUSING-RELATED AREA, EXTENT OF LARGE SCALE MAP
- HYDROGRAPHY: WATER COURSE, WIDE STREAM OR RIVER, RESERVOIR, POND OR LAKE, WETLAND OR MARSH
- CITIES AND TOWNS: STATE CAPITAL, COUNTY SEAT, VILLAGES OR LOCALITIES
- MAP FEATURES: CHURCH, ANCESTRAL BURIAL, CEMETERY, COURTHOUSE, APPROXIMATE FACILITIES, APPROXIMATE FACILITIES, APPROXIMATE FACILITIES



The South Carolina Department of Transportation makes no representations or warranties, implied or expressed, concerning the accuracy, completeness, reliability, or suitability, for any particular purpose of the information and data contained on this map or any information furnished in connection therewith.