

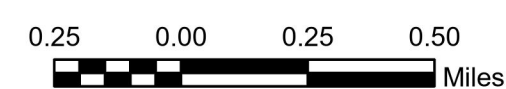
FUNCTIONAL CLASSIFICATION

SHEET 1

FLORENCE URBAN AREA

PREPARED BY THE
SOUTH CAROLINA DEPARTMENT OF TRANSPORTATION
 IN COOPERATION WITH THE
U.S. DEPARTMENT OF TRANSPORTATION
FEDERAL HIGHWAY ADMINISTRATION

October 2025



URBAN FUNCTIONAL CLASSIFICATION

INTERSTATES	
FREEWAYS & EXPRESSWAYS ..	
PRINCIPLE ARTERIALS	
MINOR ARTERIALS	
MAJOR COLLECTORS	
MINOR COLLECTORS	
PROPOSED ROUTES	Dashed in color of Functional Classification

ROAD SYSTEM

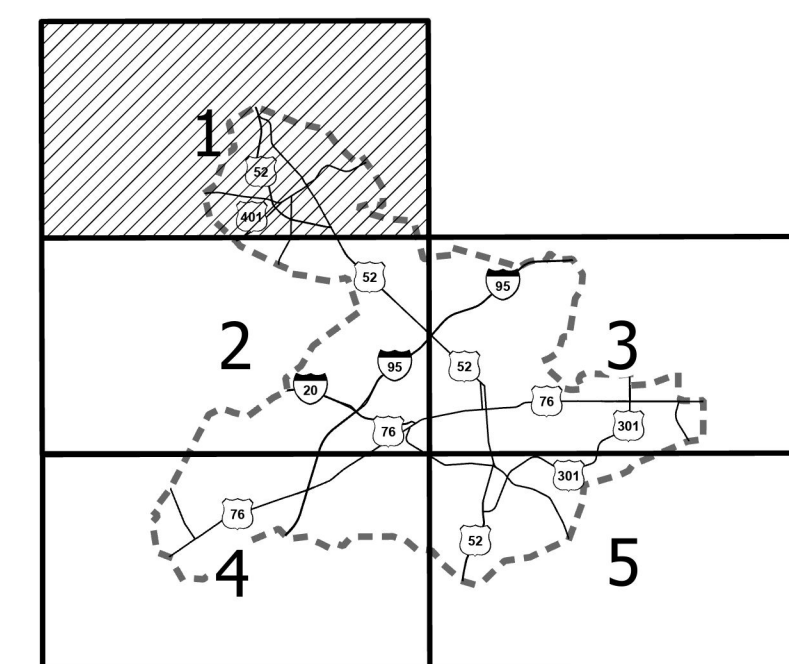
INTERSTATE	
U.S. ROUTE	
S.C. ROUTE	
SECONDARY ROUTE	
EXIT NUMBER	
LOCAL ROUTE	
INTERSTATE	
MULTI-LANE HIGHWAY	
TWO-LANE HIGHWAY	
DIVIDED HIGHWAY	
UNPAVED HIGHWAY	
PAVED COUNTY	
UNPAVED COUNTY	
PRIVATE	

HYDROGRAPHY

RIVER	
LAKES	

BOUNDARY

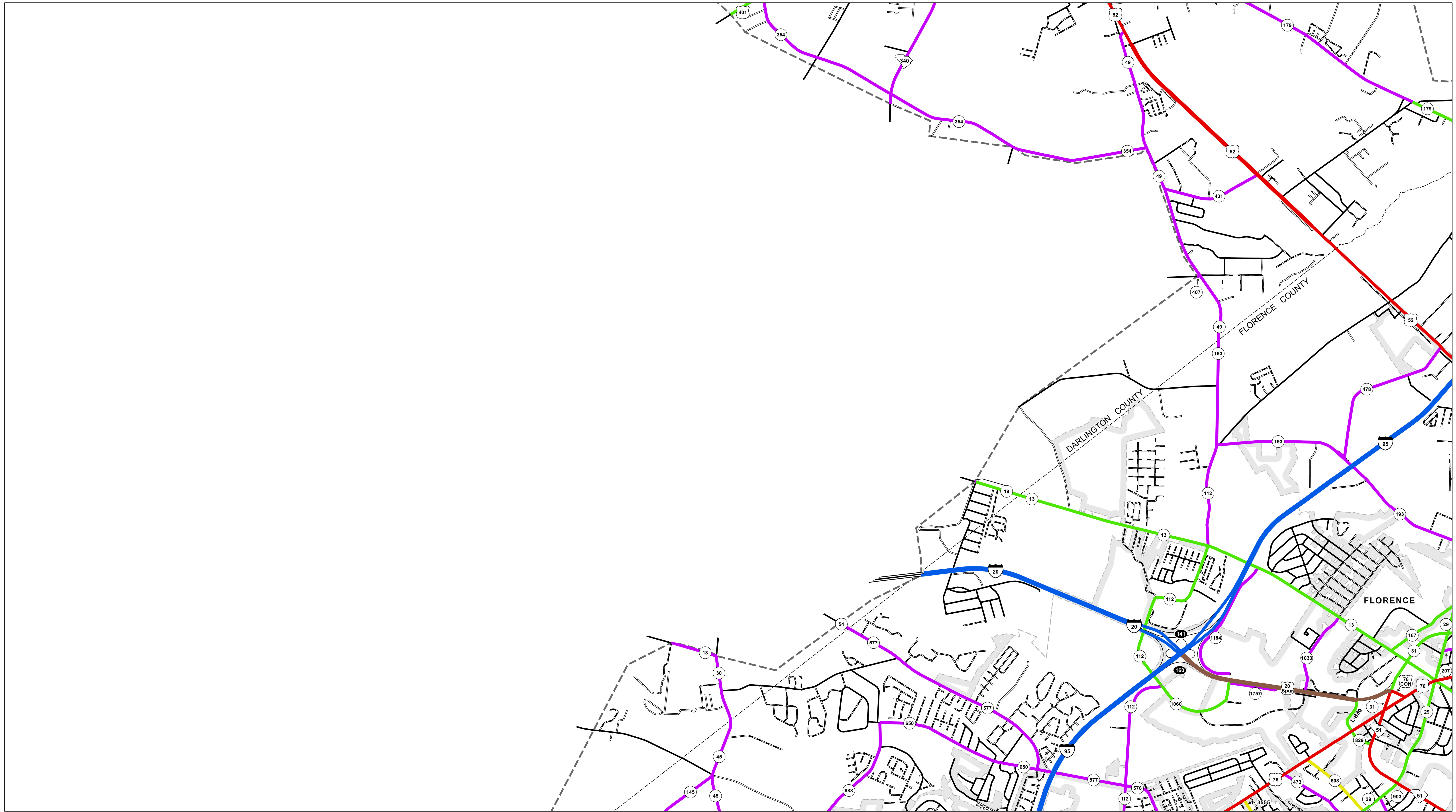
STATE LINE	
COUNTY LINE	
URBAN AREA	
GOVERNMENT PROPERTY	
MUNICIPAL AREAS	



Approved
 For Division Administrator

By:

Federal Highway Administration



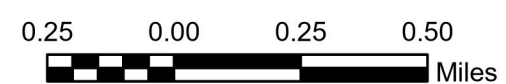
FUNCTIONAL CLASSIFICATION

SHEET 2

FLORENCE URBAN AREA

PREPARED BY THE
SOUTH CAROLINA DEPARTMENT OF TRANSPORTATION
 IN COOPERATION WITH THE
U.S. DEPARTMENT OF TRANSPORTATION
FEDERAL HIGHWAY ADMINISTRATION

October 2025



URBAN FUNCTIONAL CLASSIFICATION

- INTERSTATES
- FREEWAYS & EXPRESSWAYS
- PRINCIPLE ARTERIALS
- MINOR ARTERIALS
- MAJOR COLLECTORS
- MINOR COLLECTORS
- PROPOSED ROUTES Dashed in color of Functional Classification

ROAD SYSTEM

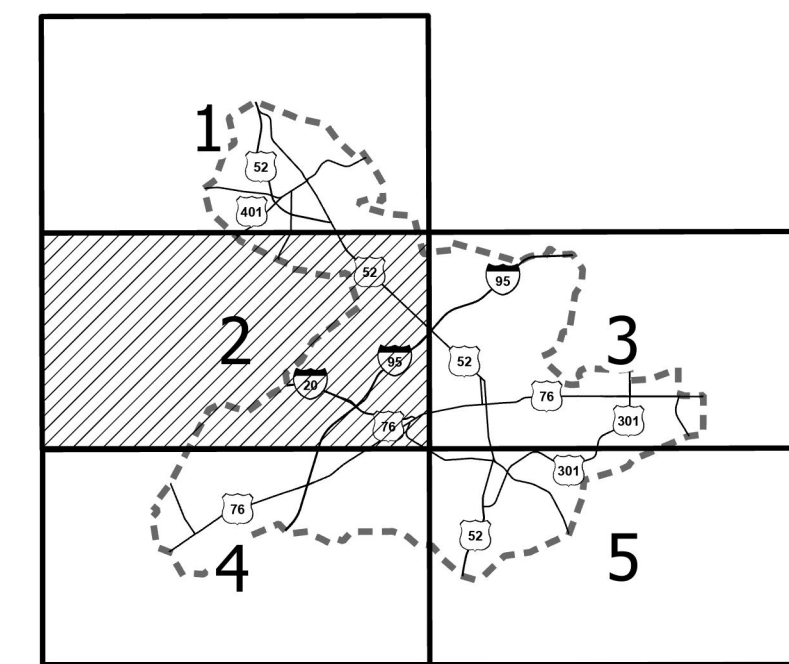
- INTERSTATE
- U.S. ROUTE
- S.C. ROUTE
- SECONDARY ROUTE
- EXIT NUMBER
- LOCAL ROUTE L-999
- INTERSTATE
- MULTI-LANE HIGHWAY
- TWO-LANE HIGHWAY
- DIVIDED HIGHWAY
- UNPAVED HIGHWAY
- PAVED COUNTY
- UNPAVED COUNTY
- PRIVATE

HYDROGRAPHY

- RIVER
- LAKES

BOUNDARY

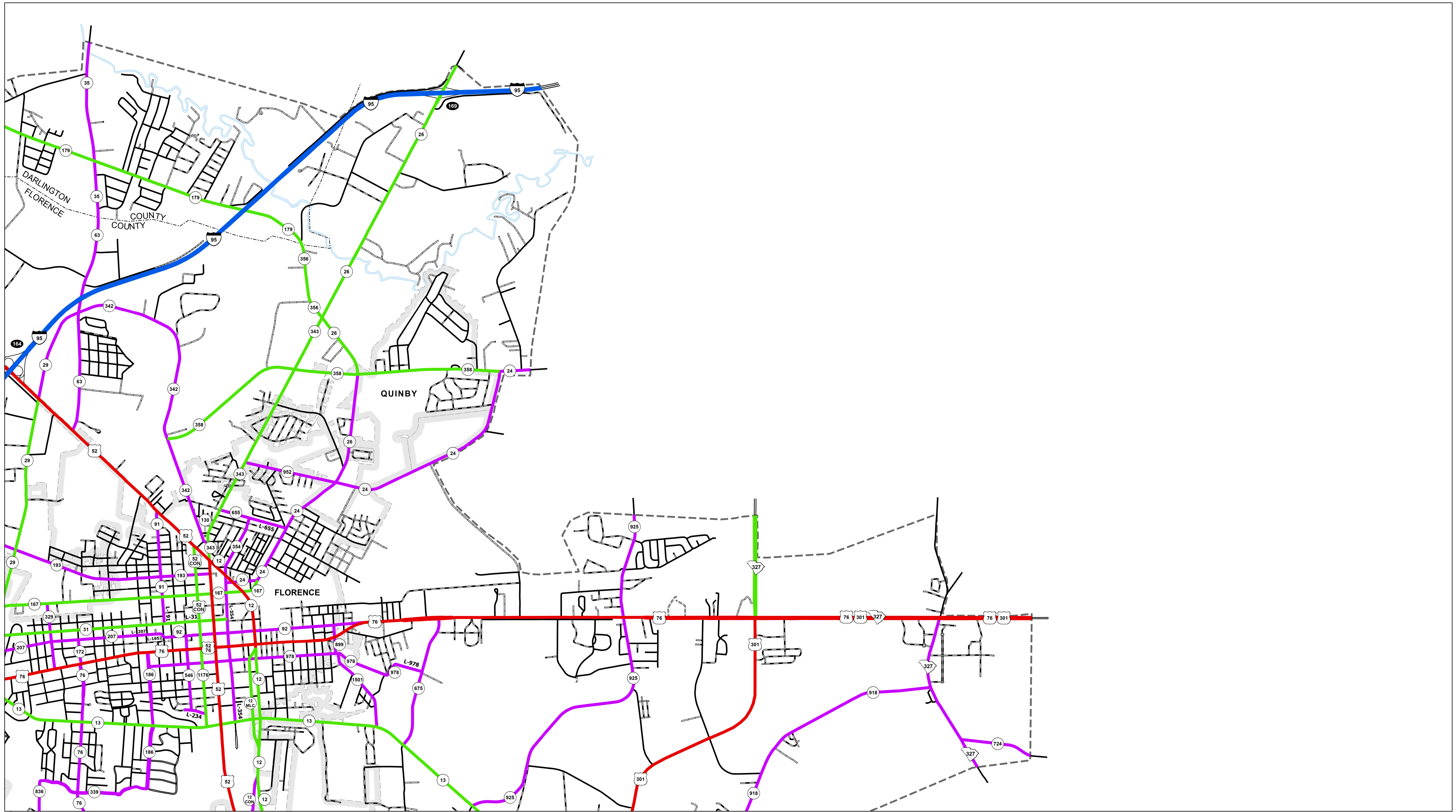
- STATE LINE
- COUNTY LINE
- URBAN AREA
- GOVERNMENT PROPERTY
- MUNICIPAL AREAS



Approved
 For Division Administrator

By: _____

Federal Highway Administration



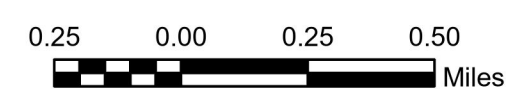
FUNCTIONAL CLASSIFICATION

SHEET 3

FLORENCE URBAN AREA

PREPARED BY THE
SOUTH CAROLINA DEPARTMENT OF TRANSPORTATION
IN COOPERATION WITH THE
U.S. DEPARTMENT OF TRANSPORTATION
FEDERAL HIGHWAY ADMINISTRATION

October 2025



URBAN FUNCTIONAL CLASSIFICATION

- INTERSTATES Blue
- FREEWAYS & EXPRESSWAYS Red
- PRINCIPLE ARTERIALS Green
- MINOR ARTERIALS Purple
- MAJOR COLLECTORS Yellow
- MINOR COLLECTORS Yellow
- PROPOSED ROUTES Dashed in color of Functional Classification

ROAD SYSTEM

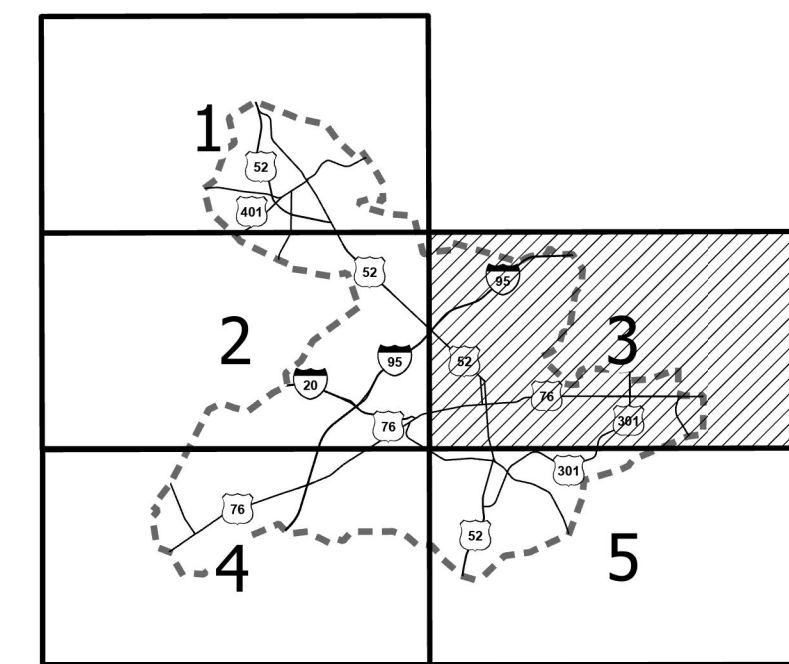
- INTERSTATE I-95
- U.S. ROUTE U.S. 95
- S.C. ROUTE S.C. 95
- SECONDARY ROUTE S.C. 95
- EXIT NUMBER 95
- LOCAL ROUTE L-999
- INTERSTATE I-95
- MULTI-LANE HIGHWAY L-999
- TWO-LANE HIGHWAY L-999
- DIVIDED HIGHWAY L-999
- UNPAVED HIGHWAY L-999
- PAVED COUNTY L-999
- UNPAVED COUNTY L-999
- PRIVATE L-999

HYDROGRAPHY

- RIVER Blue
- LAKES Blue

BOUNDARY

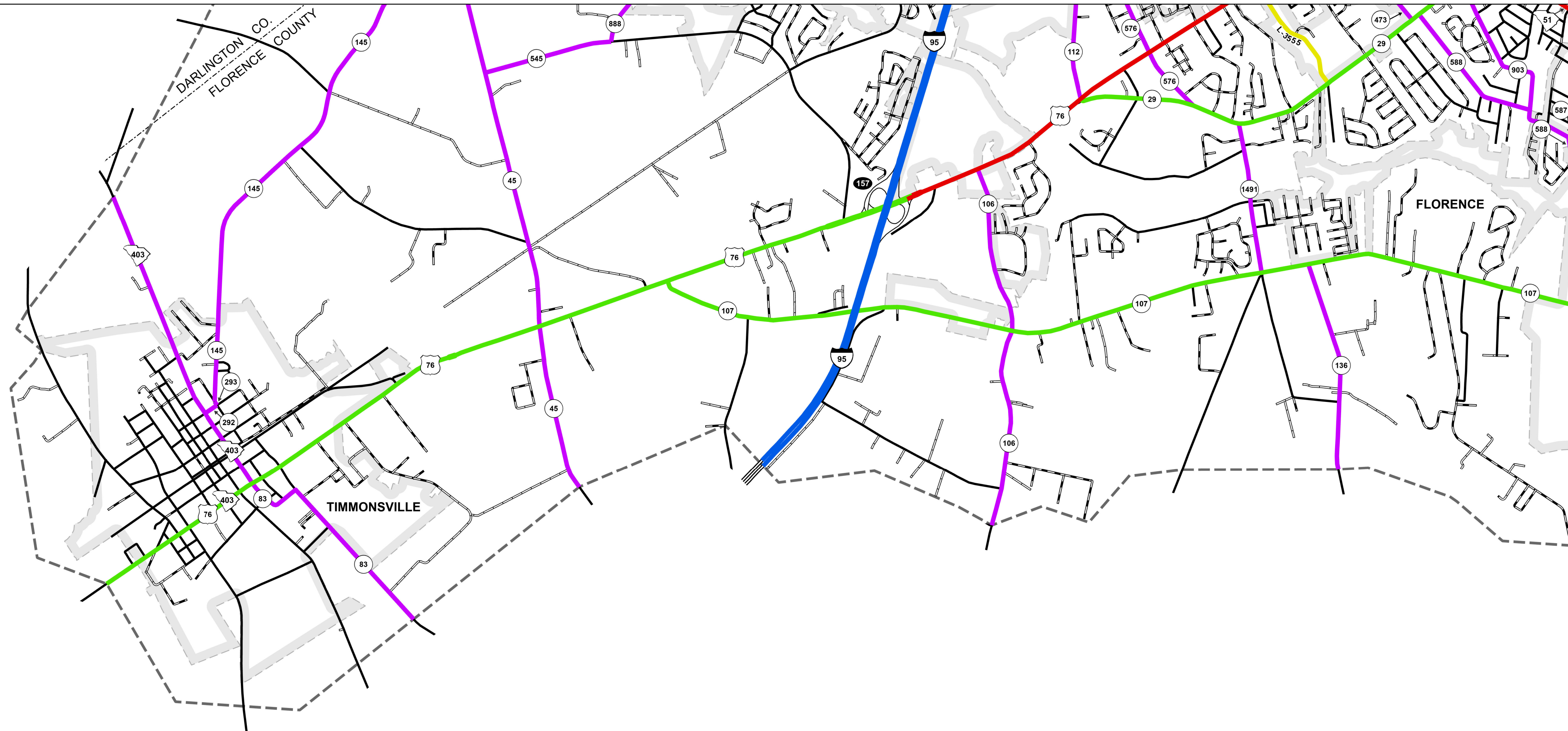
- STATE LINE Dashed
- COUNTY LINE Dashed
- URBAN AREA Shaded
- GOVERNMENT PROPERTY Dashed
- MUNICIPAL AREAS Shaded



Approved
For Division Administrator

By:

Federal Highway Administration



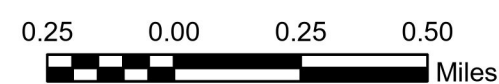
FUNCTIONAL CLASSIFICATION

SHEET 4

FLORENCE URBAN AREA

PREPARED BY THE
SOUTH CAROLINA DEPARTMENT OF TRANSPORTATION
 IN COOPERATION WITH THE
U.S. DEPARTMENT OF TRANSPORTATION
FEDERAL HIGHWAY ADMINISTRATION

October 2025



URBAN FUNCTIONAL CLASSIFICATION

- INTERSTATES [Blue line]
- FREEWAYS & EXPRESSWAYS [Brown line]
- PRINCIPLE ARTERIALS [Red line]
- MINOR ARTERIALS [Green line]
- MAJOR COLLECTORS [Purple line]
- MINOR COLLECTORS [Yellow line]
- PROPOSED ROUTES [Dashed line in color of Functional Classification]

ROAD SYSTEM

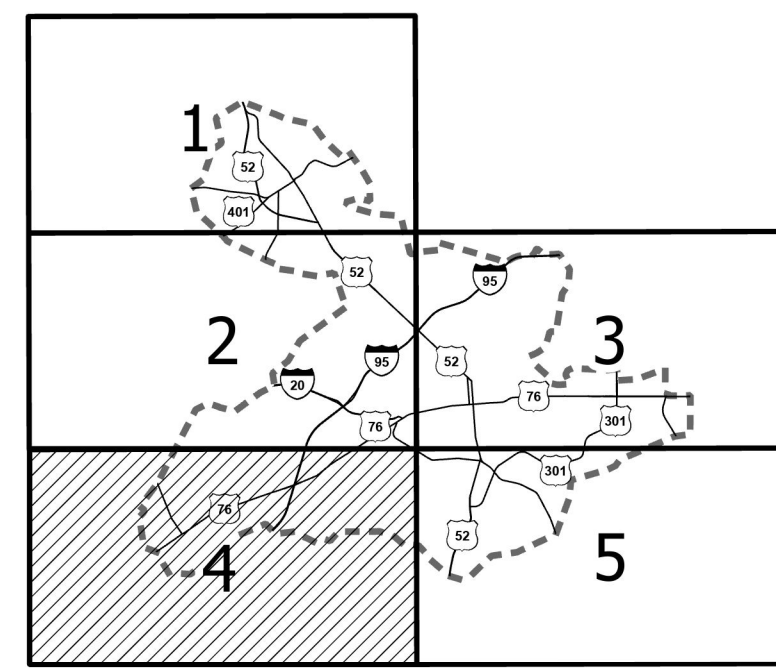
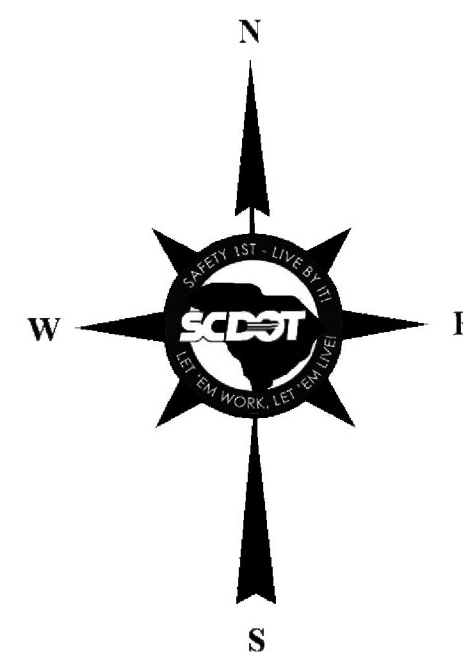
- INTERSTATE [Shield with 999]
- U.S. ROUTE [Shield with 999]
- S.C. ROUTE [Shield with 999]
- SECONDARY ROUTE [Shield with 999]
- EXIT NUMBER [Shield with 999]
- LOCAL ROUTE [Shield with L-999]
- INTERSTATE [Thick black line]
- MULTI-LANE HIGHWAY [Thick black line]
- TWO-LANE HIGHWAY [Thin black line]
- DIVIDED HIGHWAY [Thin black line with dashed center]
- UNPAVED HIGHWAY [Thin black line with dashed center]
- PAVED COUNTY [Thin black line]
- UNPAVED COUNTY [Thin black line]
- PRIVATE [Thin black line]

HYDROGRAPHY

- RIVER [Blue line]
- LAKES [Blue shape]

BOUNDARY

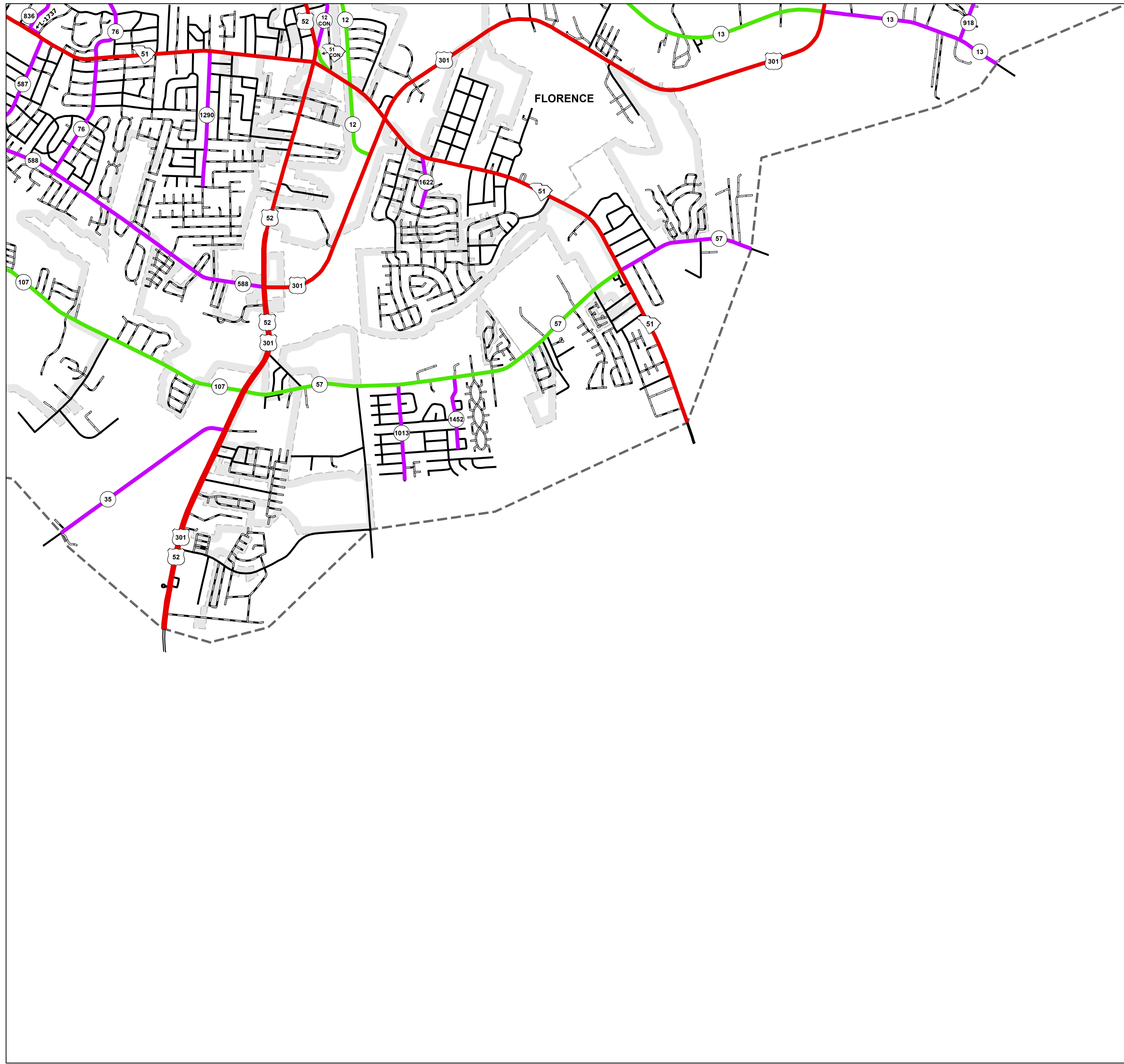
- STATE LINE [Dashed line]
- COUNTY LINE [Dashed line]
- URBAN AREA [Dashed line]
- GOVERNMENT PROPERTY [Hatched area]
- MUNICIPAL AREAS [Hatched area]



Approved
 For Division Administrator

By:

Federal Highway Administration



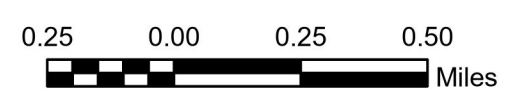
FUNCTIONAL CLASSIFICATION

SHEET 5

FLORENCE URBAN AREA

PREPARED BY THE
SOUTH CAROLINA DEPARTMENT OF TRANSPORTATION
IN COOPERATION WITH THE
U.S. DEPARTMENT OF TRANSPORTATION
FEDERAL HIGHWAY ADMINISTRATION

October 2025



www.scdot.org

URBAN FUNCTIONAL CLASSIFICATION

INTERSTATES	
FREEWAYS & EXPRESSWAYS	
PRINCIPLE ARTERIALS	
MINOR ARTERIALS	
MAJOR COLLECTORS	
MINOR COLLECTORS	
PROPOSED ROUTES	Dashed in color of Functional Classification

ROAD SYSTEM

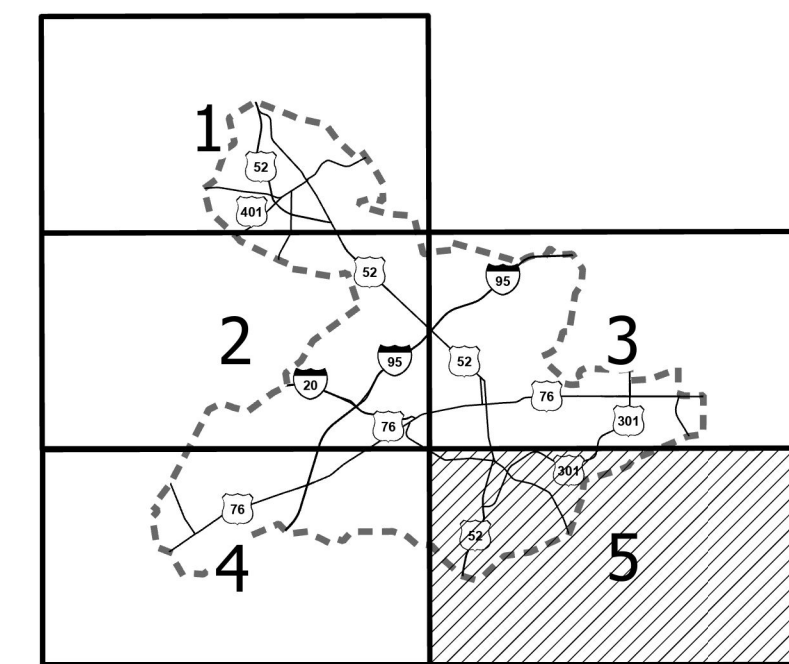
INTERSTATE	
U.S. ROUTE	
S.C. ROUTE	
SECONDARY ROUTE	
EXIT NUMBER	
LOCAL ROUTE	
INTERSTATE	
MULTI-LANE HIGHWAY	
TWO-LANE HIGHWAY	
DIVIDED HIGHWAY	
UNPAVED HIGHWAY	
PAVED COUNTY	
UNPAVED COUNTY	
PRIVATE	

HYDROGRAPHY

RIVER	
LAKES	

BOUNDARY

STATE LINE	
COUNTY LINE	
URBAN AREA	
GOVERNMENT PROPERTY	
MUNICIPAL AREAS	



Approved
For Division Administrator

By:

Federal Highway Administration