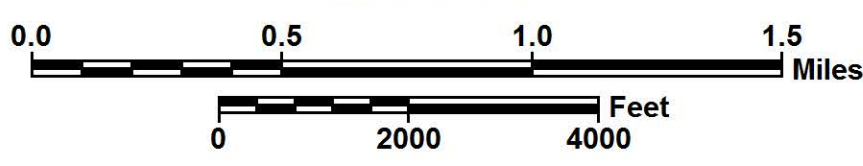


Functional Classification CITY OF GEORGETOWN GEORGETOWN COUNTY

PREPARED BY THE
SOUTH CAROLINA DEPARTMENT OF TRANSPORTATION
IN COOPERATION WITH THE
U.S. DEPARTMENT OF TRANSPORTATION
FEDERAL HIGHWAY ADMINISTRATION

MARCH 2015



Legend

- Interstates
- Freeways / Expressways
- Principle Arterials
- Minor Arterials
- Major Collectors
- Minor Collectors
- Proposed Routes
(Shown Dashed in Color
of Functional
Classification)
- Urban Areas

ROAD SYSTEM

- INTERSTATE
- U.S. ROUTE
- S.C. ROUTE
- SECONDARY ROUTE
- EXIT NUMBER
- INTERSTATE
- U.S. & S.C.
- SECONDARY
- COUNTY
- PRIVATE
- RAILROAD
- GENERAL HIGHWAY BRIDGE (BETWEEN 20' - 150')

BOUNDARY & HYDROGRAPHY

- NARROW STREAM
- WIDE STREAM OR RIVER
- RESERVOIR, POND OR LAKE
- WETLAND OR MARSH
- STATE LINE
- COUNTY LINE
- INCORPORATED AREA
- EXTENT OF LARGE SCALE MAP
- MILITARY INSTALLATIONS AND GOVERNMENT INSTITUTIONS
- NATIONAL AND STATE FORESTS, STATE PARKS, AND NATIONAL WILDLIFE REFUGES

MAP FEATURES

- PARK AND RIDE
- ARMORY
- CHURCH
- CHURCH AND CEMETERY
- COURTHOUSE
- AIRPORT COMPLETE FACILITIES
- SCDOT DISTRICT OFFICE / MAINTENANCE SHOP
- HOSPITAL
- SCHOOL
- POINT OF INTEREST
- CEMETERY
- WELCOME CENTER AND REST AREA
- AIRPORT LIMITED FACILITIES

Approved
For Division Administrator
By: *Golanda Morris*
Federal Highway Administration

Updated 03/16/2020