

STATE BARRIERS ROAD INDEX table with columns for barrier number, county, and road name. Includes entries for major roads like I-85, I-95, and various state routes.

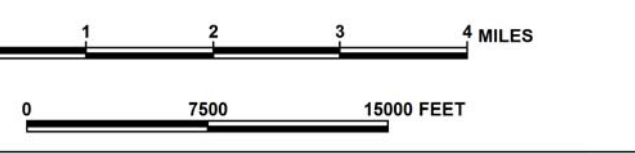
TRAFFIC COUNT STATIONS GREENVILLE COUNTY South Carolina

PREPARED BY THE
SOUTH CAROLINA DEPARTMENT OF TRANSPORTATION
IN COOPERATION WITH THE
U.S. DEPARTMENT OF TRANSPORTATION
FEDERAL HIGHWAY ADMINISTRATION

January 2016



SIGNIFICANT FACTS
EST. 1786
NAMED EITHER FOR REVOLUTIONARY WAR GENERAL NATHANIEL GREEN OR FOR AN EARLY RESIDENT, ISAAC GREEN
COUNTY POPULATION 2010 CENSUS 451,225
COUNTY AREA IN SQUARE MILES 790



LEGEND

ROAD SYSTEM

- INTERSTATE
- U.S. ROUTE
- STATE ROUTE
- SECONDARY ROUTE
- LOCAL ROAD
- PRIVATE ROAD
- RAILROAD

BOUNDARIES

- COUNTY LINE
- CITY/TOWN BOUNDARY
- WATER BOUNDARY
- WETLAND OR MARSH
- STATE CAPITAL
- CITY/TOWN

HYDROGRAPHY

- WATER BOUNDARY
- WETLAND OR MARSH

CITIES AND TOWNS

- STATE CAPITAL
- CITY/TOWN

MAP FEATURES

- HORIZONTAL
- SCHOOL
- POINT OF INTEREST
- GENEALOGY
- WELCOME CENTER
- AIRPORT LIMITED FACILITIES
- TRAFFIC COUNT STATIONS
- TRAFFIC STATION NUMBER

For ordering information, please contact:
South Carolina Department of Transportation
Engineering Publications Sales Office
955 Park Street - Room 122 (803) 737-4533
Columbia, SC 29201 E-Mail: engrpubsales@scdot.org

For comments concerning this map, please contact:
GIS/Mapping (803) 737-3103

The South Carolina Department of Transportation makes no representations or warranties, implied or expressed, concerning the accuracy, completeness, reliability, or suitability, for any particular purpose of the information and data contained on this map or any information furnished in connection therewith.