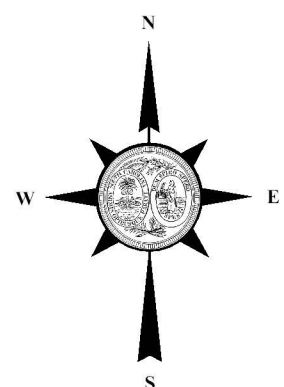
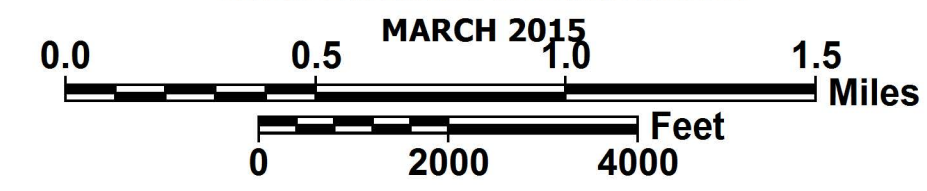




**Functional Classification  
SHEET 1**

**SUMTER URBANIZED AREA**

SUMTER COUNTY  
 PREPARED BY THE  
 SOUTH CAROLINA DEPARTMENT OF TRANSPORTATION  
 IN COOPERATION WITH THE  
 U.S. DEPARTMENT OF TRANSPORTATION  
 FEDERAL HIGHWAY ADMINISTRATION



**Legend**

- Interstates
- Freeways / Expressways
- Principle Arterials
- Minor Arterials
- Major Collectors
- Minor Collectors
- Proposed Routes  
(Shown Dashed in Color  
of Functional  
Classification)
- Urban Areas

**ROAD SYSTEM**

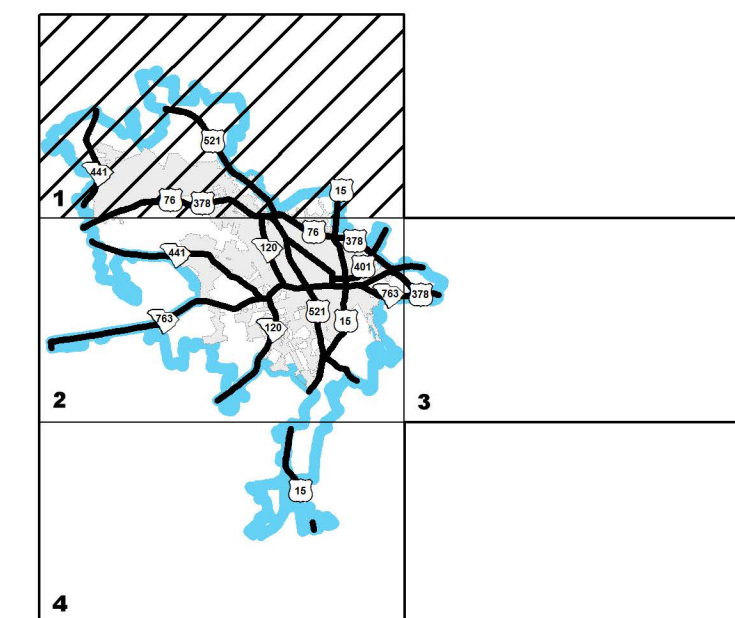
- INTERSTATE
- U.S. ROUTE
- S.C. ROUTE
- SECONDARY ROUTE
- INTERSTATE
- U.S. & S.C. MULTI-LANE DIVIDED
- SECONDARY PAVED
- SECONDARY UNPAVED
- COUNTY PAVED
- COUNTY UNPAVED
- PRIVATE
- RAILROAD

**BOUNDARY & HYDROGRAPHY**

- NARROW STREAM
- WIDE STREAM OR RIVER
- RESERVOIR, POND OR LAKE
- WETLAND OR MARSH
- STATE LINE
- COUNTY LINE
- INCORPORATED AREA
- MILITARY INSTALLATIONS AND GOVERNMENT INSTITUTIONS
- NATIONAL AND STATE FORESTS, STATE PARKS, AND NATIONAL WILDLIFE REFUGES

**MAP FEATURES**

- PARK AND RIDE
- ARMORY
- CHURCH AND CEMETERY
- COURTHOUSE
- AIRPORT COMPLETE FACILITIES
- AIRPORT LIMITED FACILITIES
- SCDOT DISTRICT OFFICE / MAINTENANCE SHOP
- HOSPITAL
- SCHOOL
- POINT OF INTEREST
- CEMETERY
- WELCOME CENTER AND REST AREA
- AIRPORT LIMITED FACILITIES



Approved  
 For Division Administrator  
 By:  
 Federal Highway Administration