

INMAN URBAN AREA

FUNCTIONAL CLASSIFICATION

SHEET 1

SPARTANBURG URBAN AREA

PREPARED BY THE
SOUTH CAROLINA DEPARTMENT OF TRANSPORTATION
IN COOPERATION WITH THE
U.S. DEPARTMENT OF TRANSPORTATION
FEDERAL HIGHWAY ADMINISTRATION

October 2025



URBAN FUNCTIONAL CLASSIFICATION

- INTERSTATES ----- Blue line
- FREEWAYS & EXPRESSWAYS ----- Brown line
- PRINCIPLE ARTERIALS ----- Red line
- MINOR ARTERIALS ----- Green line
- MAJOR COLLECTORS ----- Purple line
- MINOR COLLECTORS ----- Yellow line
- PROPOSED ROUTES ----- Dashed in color of Functional Classification

ROAD SYSTEM

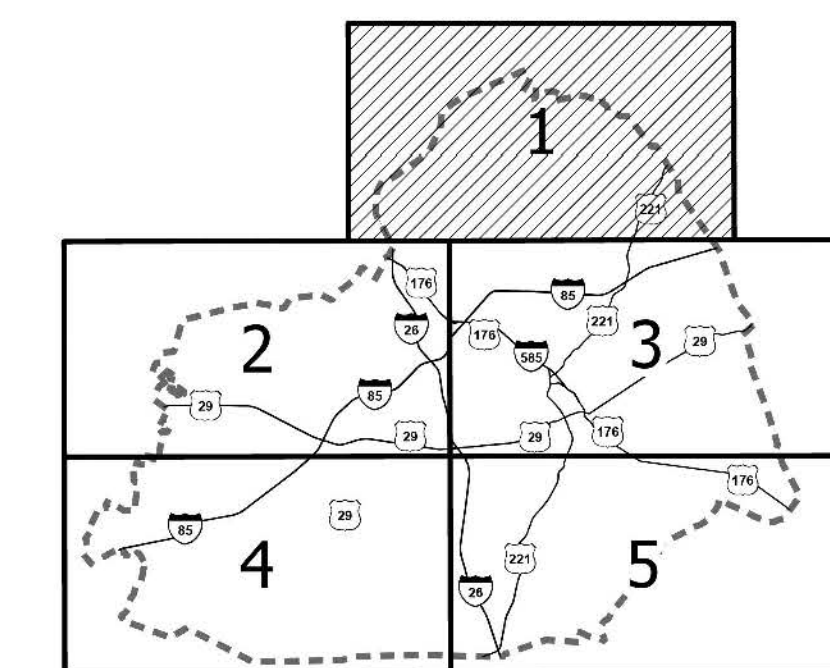
- INTERSTATE ----- [Shield icon]
- U.S. ROUTE ----- [Shield icon]
- S.C. ROUTE ----- [Shield icon]
- SECONDARY ROUTE ----- [Shield icon]
- EXIT NUMBER ----- [Shield icon]
- LOCAL ROUTE ----- [Shield icon]
- LOCAL ROUTE ----- L-999
- LOCAL ROUTE ----- L-999
- INTERSTATE ----- [Thick line icon]
- MULTI-LANE HIGHWAY ----- [Thick line icon]
- TWO-LANE HIGHWAY ----- [Thin line icon]
- DIVIDED HIGHWAY ----- [Thin line icon]
- UNPAVED HIGHWAY ----- [Thin line icon]
- PAVED COUNTY ----- [Thin line icon]
- UNPAVED COUNTY ----- [Thin line icon]
- PRIVATE ----- [Thin line icon]

HYDROGRAPHY

- RIVER ----- [Blue line icon]
- LAKES ----- [Blue area icon]

BOUNDARY

- STATE LINE ----- [Dashed line icon]
- COUNTY LINE ----- [Dashed line icon]
- URBAN AREA ----- [Dashed line icon]
- GOVERNMENT PROPERTY ----- [Hatched area icon]
- MUNICIPAL AREAS ----- [Hatched area icon]

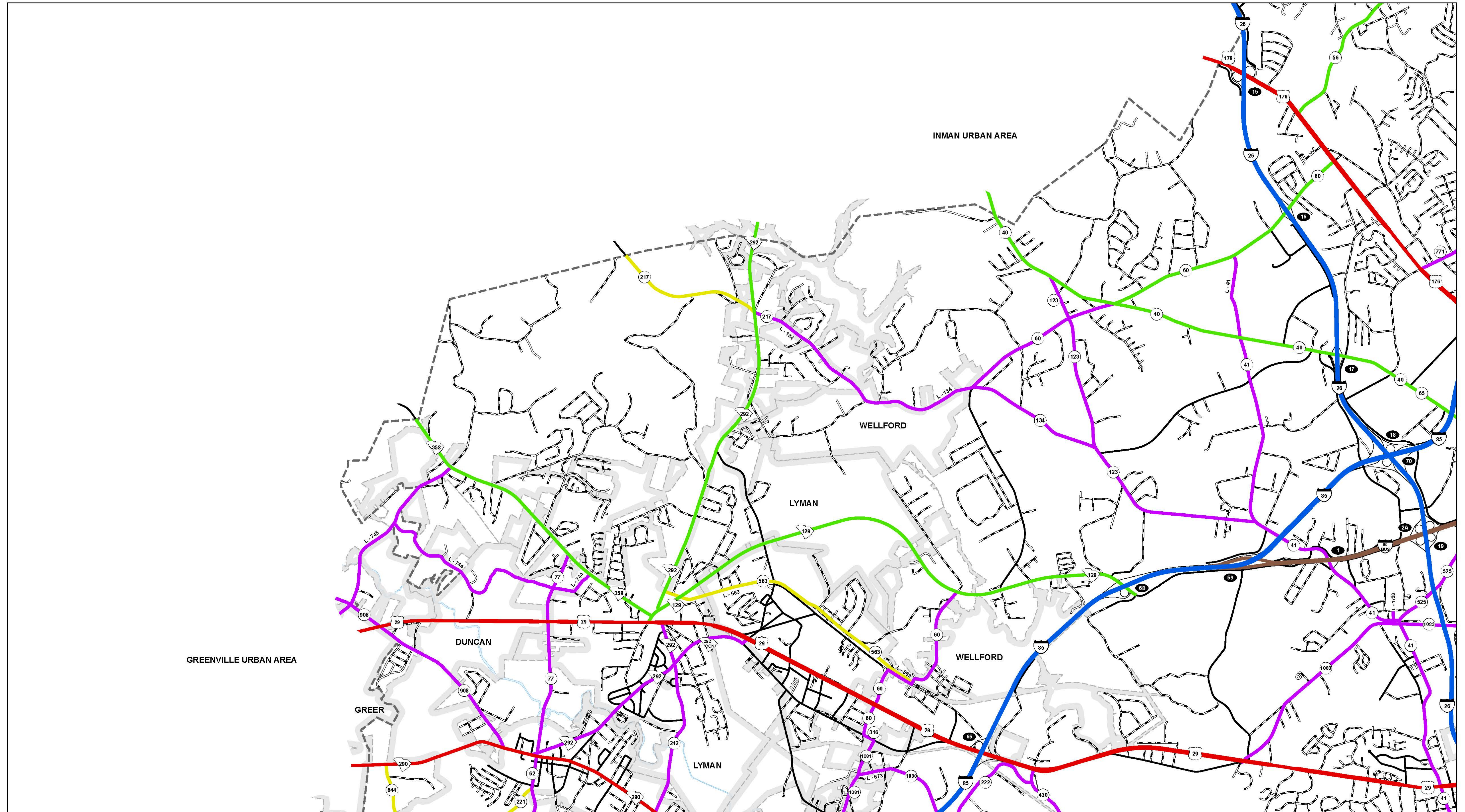


Approved
For Division Administrator

By: **MARK DURANT PLEASANT**
T

Digitally signed
by MARK DURANT PLEASANT
Date: 2025.11.12 15:22:08 -05'00'

Federal Highway Administration



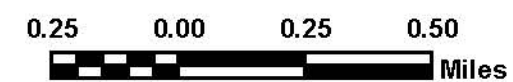
FUNCTIONAL CLASSIFICATION

SHEET 2

SPARTANBURG URBAN AREA

PREPARED BY THE
SOUTH CAROLINA DEPARTMENT OF TRANSPORTATION
IN COOPERATION WITH THE
U.S. DEPARTMENT OF TRANSPORTATION
FEDERAL HIGHWAY ADMINISTRATION

November 2025



www.scdot.org

URBAN FUNCTIONAL CLASSIFICATION

- INTERSTATES -----
- FREEWAYS & EXPRESSWAYS ---
- PRINCIPLE ARTERIALS -----
- MINOR ARTERIALS -----
- MAJOR COLLECTORS -----
- MINOR COLLECTORS -----
- PROPOSED ROUTES -----

Dashed in color of Functional Classification

ROAD SYSTEM

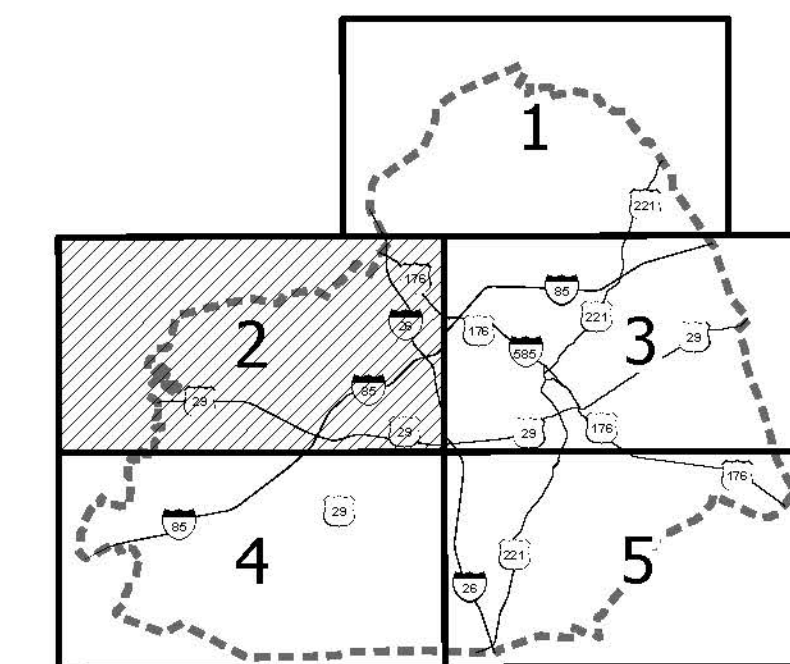
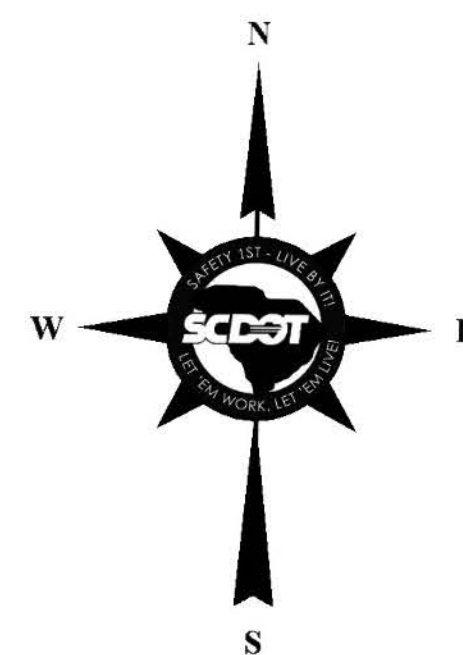
- INTERSTATE
- U.S. ROUTE
- S.C. ROUTE
- SECONDARY ROUTE -----
- EXIT NUMBER -----
- LOCAL ROUTE -----
- L-999
- INTERSTATE
- MULTI-LANE HIGHWAY -----
- TWO-LANE HIGHWAY -----
- DIVIDED HIGHWAY -----
- UNPAVED HIGHWAY -----
- PAVED COUNTY -----
- UNPAVED COUNTY -----
- PRIVATE -----

HYDROGRAPHY

- RIVER -----
- LAKES -----

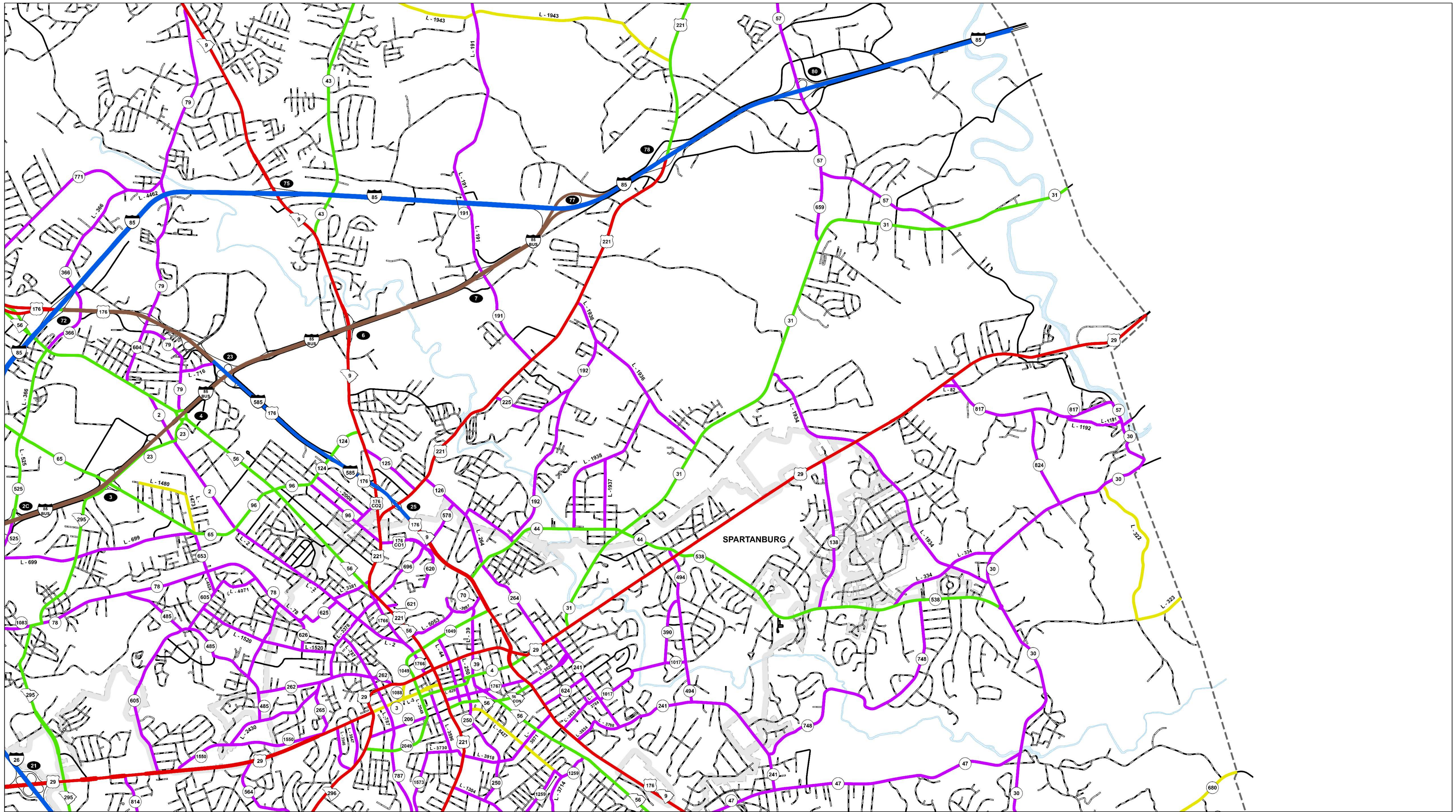
BOUNDARY

- STATE LINE -----
- COUNTY LINE -----
- URBAN AREA -----
- GOVERNMENT PROPERTY -----
- MUNICIPAL AREAS -----



Approved
For Division Administrator

By: **MARK DURANT PLEASANT**
Digitally signed by MARK DURANT PLEASANT
Date: 2026.01.29 12:54:23 -05'00'
Federal Highway Administration



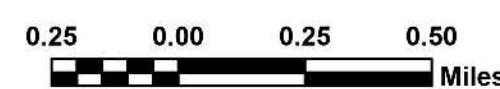
FUNCTIONAL CLASSIFICATION

SHEET 3

SPARTANBURG URBAN AREA

PREPARED BY THE
SOUTH CAROLINA DEPARTMENT OF TRANSPORTATION
IN COOPERATION WITH THE
U.S. DEPARTMENT OF TRANSPORTATION
FEDERAL HIGHWAY ADMINISTRATION

October 2025



www.scdot.org

URBAN FUNCTIONAL CLASSIFICATION

- INTERSTATES -----
- FREWAYS & EXPRESSWAYS ---
- PRINCIPLE ARTERIALS -----
- MINOR ARTERIALS -----
- MAJOR COLLECTORS -----
- MINOR COLLECTORS -----
- PROPOSED ROUTES -----

Dashed in color of Functional Classification

ROAD SYSTEM

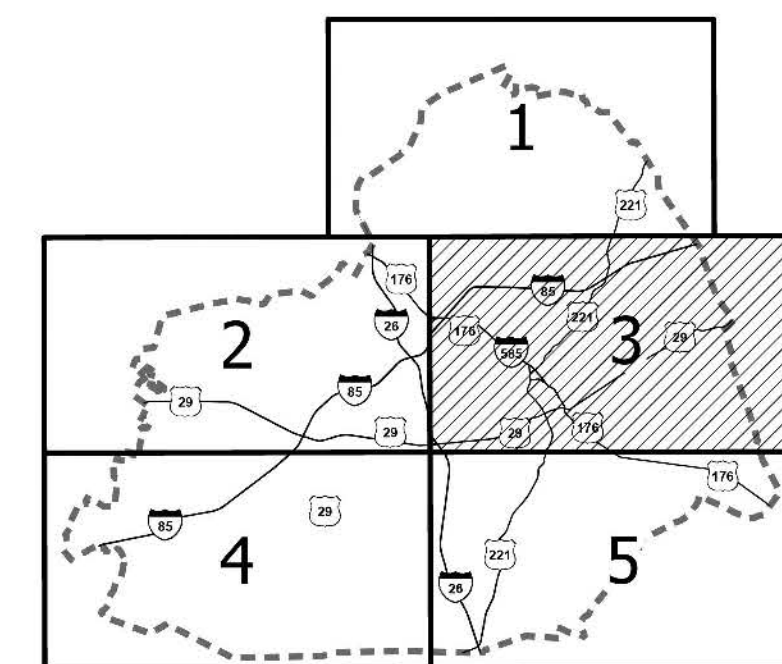
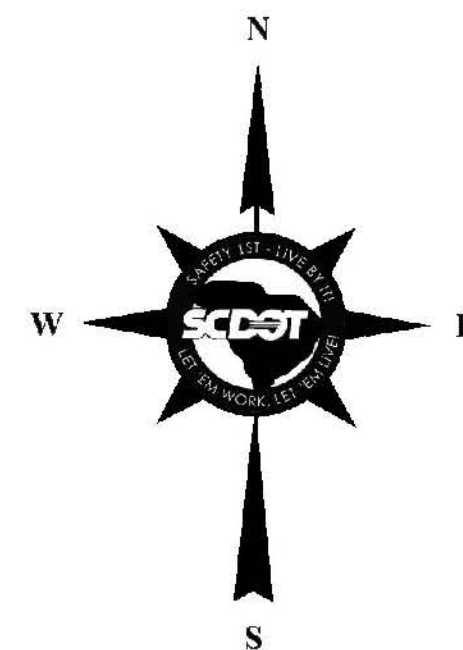
- INTERSTATE
- U.S. ROUTE
- S.C. ROUTE
- SECONDARY ROUTE
- EXIT NUMBER
- LOCAL ROUTE
- INTERSTATE
- MULTI-LANE HIGHWAY
- TWO-LANE HIGHWAY
- DIVIDED HIGHWAY
- UNPAVED HIGHWAY
- PAVED COUNTY
- UNPAVED COUNTY
- PRIVATE

HYDROGRAPHY

- RIVER
- LAKES

BOUNDARY

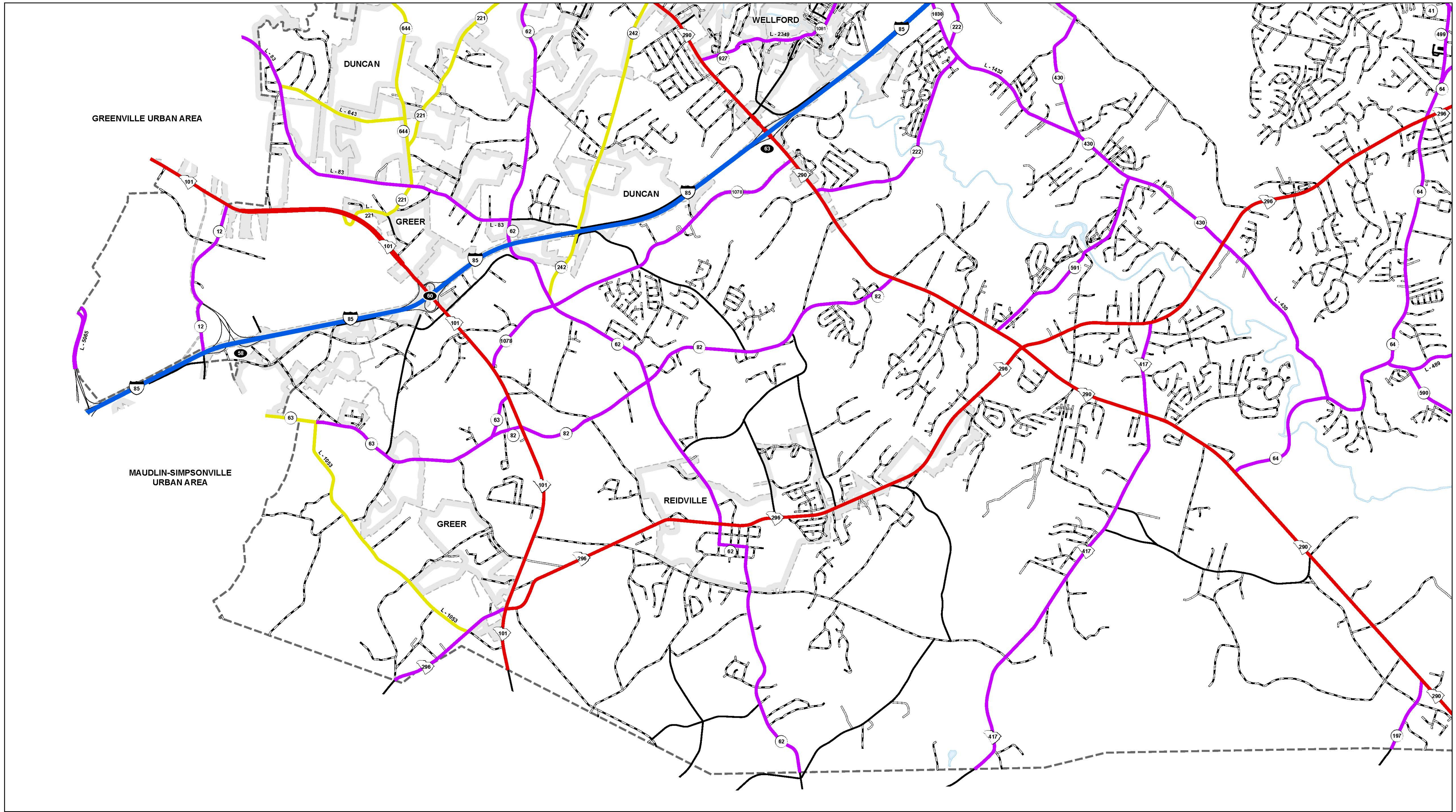
- STATE LINE
- COUNTY LINE
- URBAN AREA
- GOVERNMENT PROPERTY
- MUNICIPAL AREAS



Approved
For Division Administrator

By: **MARK DURANT PLEASANT**
Digitally signed by MARK DURANT PLEASANT
Date: 2025.11.12 15:23:12 -05'00'

Federal Highway Administration



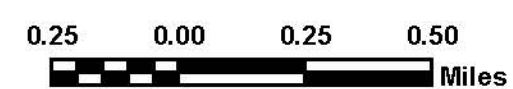
FUNCTIONAL CLASSIFICATION

SHEET 4

SPARTANBURG URBAN AREA

PREPARED BY THE
SOUTH CAROLINA DEPARTMENT OF TRANSPORTATION
IN COOPERATION WITH THE
U.S. DEPARTMENT OF TRANSPORTATION
FEDERAL HIGHWAY ADMINISTRATION

November 2025



URBAN FUNCTIONAL CLASSIFICATION

- INTERSTATES ----- Blue line
- FREEWAYS & EXPRESSWAYS ----- Red line
- PRINCIPLE ARTERIALS ----- Purple line
- MINOR ARTERIALS ----- Yellow line
- MAJOR COLLECTORS ----- Dashed purple line
- MINOR COLLECTORS ----- Dashed yellow line
- PROPOSED ROUTES ----- Dashed in color of Functional Classification

ROAD SYSTEM

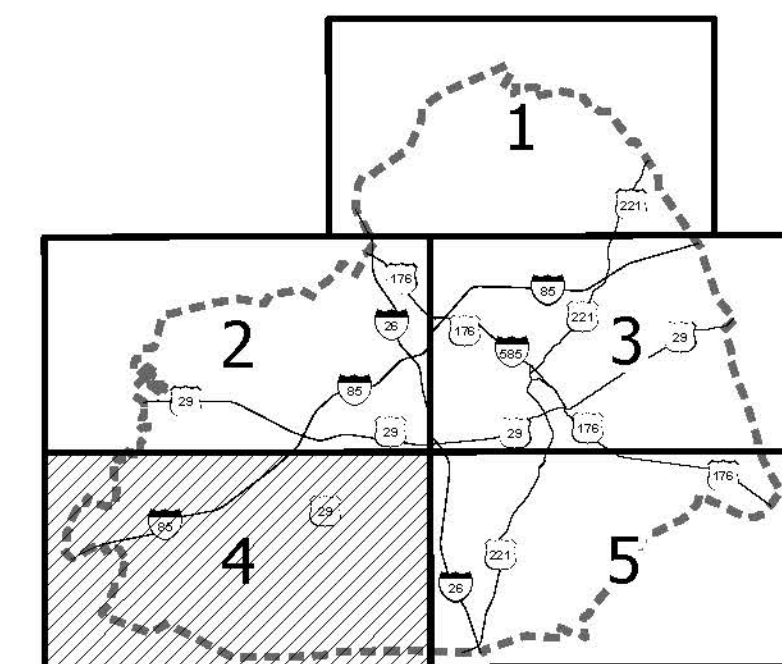
- INTERSTATE ----- Blue line with shield
- U.S. ROUTE ----- Red line with shield
- S.C. ROUTE ----- Purple line with shield
- SECONDARY ROUTE ----- Yellow line with shield
- EXIT NUMBER ----- Dashed line with shield
- LOCAL ROUTE ----- Dashed line with shield
- L-999 ----- Dashed line with shield
- INTERSTATE ----- Solid blue line
- MULTI-LANE HIGHWAY ----- Solid red line
- TWO-LANE HIGHWAY ----- Solid purple line
- DIVIDED HIGHWAY ----- Solid yellow line
- UNPAVED HIGHWAY ----- Dashed black line
- PAVED COUNTY ----- Solid black line
- UNPAVED COUNTY ----- Dashed black line
- PRIVATE ----- Dotted black line

HYDROGRAPHY

- RIVER ----- Blue wavy line
- LAKES ----- Blue irregular shape

BOUNDARY

- STATE LINE ----- Dashed line
- COUNTY LINE ----- Dotted line
- URBAN AREA ----- Solid black line
- GOVERNMENT PROPERTY ----- Dashed black line
- MUNICIPAL AREAS ----- Dotted black line



Approved

For Division Administrator

By: **MARK DURANT PLEASANT**

Digitally signed
by MARK DURANT PLEASANT
Date: 2026.01.29
12:55:42 -05'00'

Federal Highway Administration

