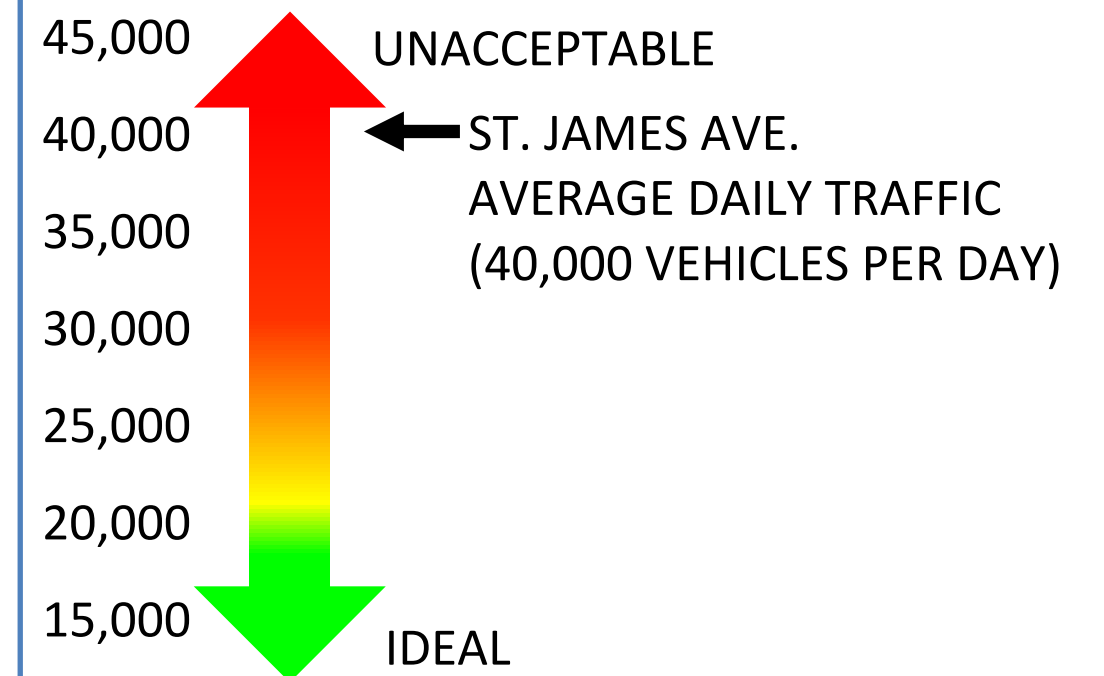


# CRASH ANALYSIS

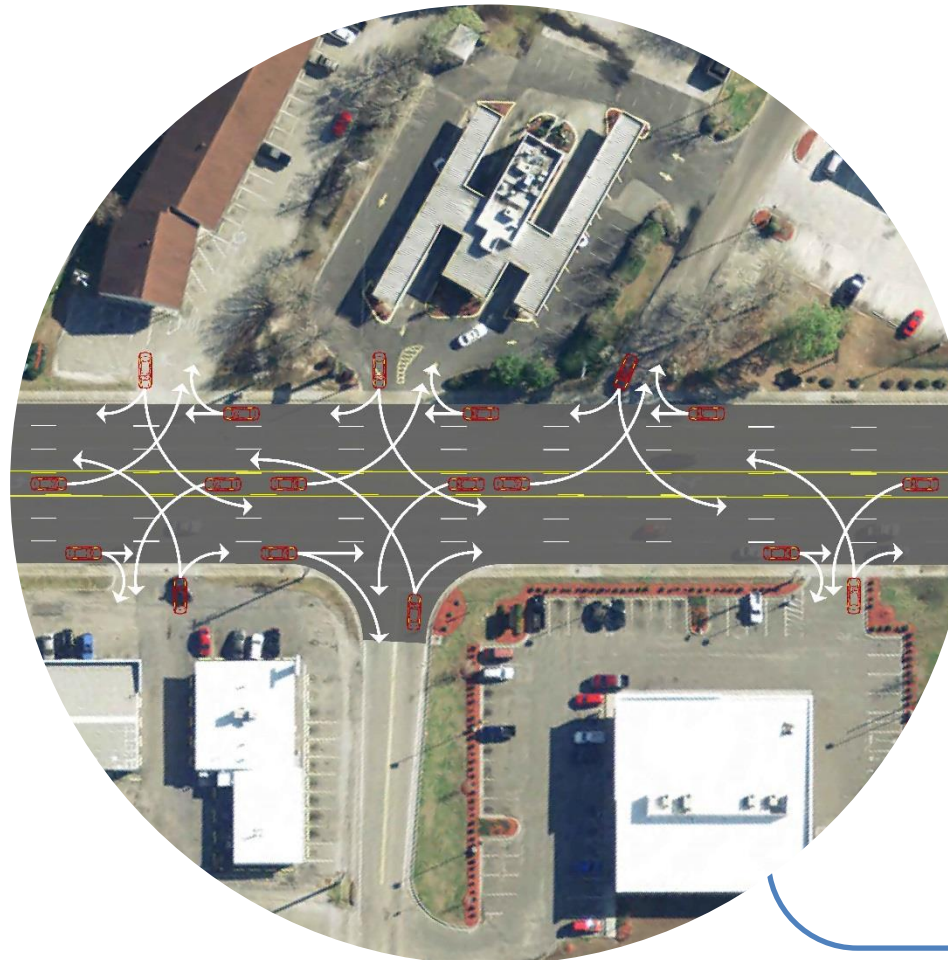
## US 176 ST. JAMES AVENUE SAFETY IMPROVEMENTS



Each dot above represents a crash location. Note the red dots, which represent right angle crashes. These tend to have the highest injury rates.



Traffic volumes on St. James Avenue have grown beyond the generally recommended level for two-way left-turn lanes.



The high volumes combined with numerous conflicting turning movements force drivers to make multiple decisions quickly. This results in both right angle and rear end crashes.