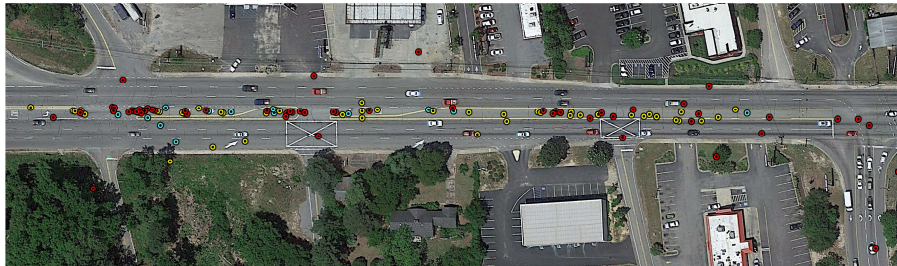


Project Background

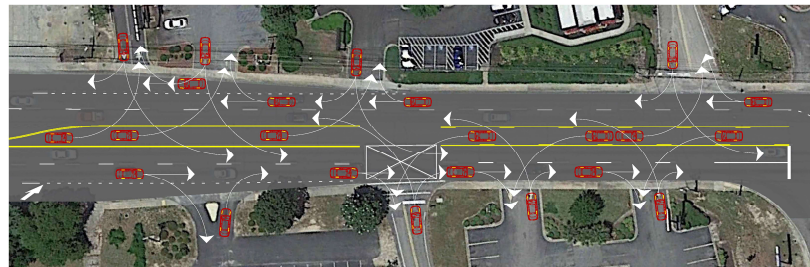
This project was initiated by SCDOT's Office of Traffic Safety. The project began with a Road Safety Audit (RSA) performed by a multidisciplinary team which included **SCDOT**, **Federal Highway Administration (FHWA)**, engineering firm **Stantec**, **Lexington County**, the **City of West Columbia**, the **South Carolina Highway Patrol**, and the **City of West Columbia Police Department**.

Through team input, the RSA provided recommendations for improving safety and traffic operations along US 1. The recommendations are now being designed for implementation.

Crash Analysis



Each dot above represents a crash location. Note the red dots, which represent right angle crashes. These tend to have the highest injury rates.



High volumes combined with numerous conflicting turning movements force drivers to make multiple decisions quickly. This results in both right angle and rear end crashes.

Crash History

1,113 Crashes
278 Injuries
3 Fatalities

2014

302

(25 CRASHES PER MONTH)



2013

276

(23 CRASHES PER MONTH)



2012

276

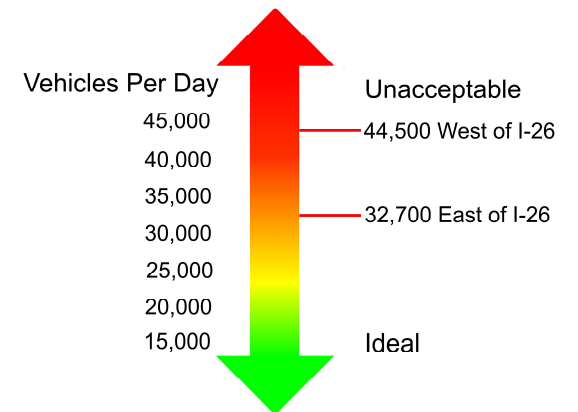
(23 CRASHES PER MONTH)



2011

259

(22 CRASHES PER MONTH)



Traffic volumes on US 1 have grown beyond the generally recommended level for two-way left-turn lanes.