

### Map Legend

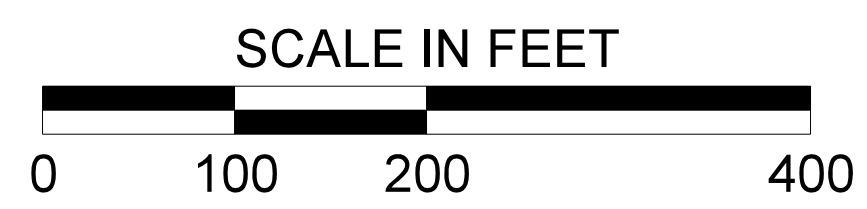
- ROADWAY PAVEMENT
- PAVEMENT REMOVAL
- EXISTING CONCRETE MEDIAN
- PROPOSED MEDIAN
- PROPOSED CONCRETE ISLAND
- PROPOSED SIDEWALK
- CHARLESTON COUNTY BIKE/PED IMPROVEMENT PROJECT
- EXISTING RIGHT OF WAY
- PROPOSED RIGHT OF WAY
- EXISTING PROPERTY LINE
- EXISTING SIGNAL
- CARTA BUS STOP LOCATION

### Improvements Timeline

**SHORT TERM:**  
 -UPDATE ALL CROSSWALKS TO HIGH VISIBILITY  
 -UPGRADE PAVEMENT MARKINGS  
 -CLEAN AND MAINTAIN BIKE LANES  
 -TRIM OVERGROWN VEGETATION AND REMOVE SEDIMENT BUILDUP FROM SIDEWALKS  
 -REVIEW YELLOW CLEARANCE INTERVALS AT SIGNALIZED INTERSECTIONS

**MEDIUM TERM:**  
 -RECONSTRUCT RAMPS/CURBS TO BE ADA COMPLIANT  
 -INSTALL RAISED MEDIAN AND U-TURN BULBS  
 -INSTALL FLASHING YELLOW ARROWS, LEADING PEDESTRIAN INTERVALS, AND NEAR-SIDE SIGNAL HEADS, AT SELECT INTERSECTIONS  
 -CONVERT LANE ORIENTATION AT SELECT INTERSECTIONS  
 -EVALUATE PEDESTRIAN CROSSWALK CROSSING TIMES AND PEDESTRIAN SIGNAL HEAD SIGHT DISTANCE  
 -EVALUATE TRANSIT STOPS  
 -INSTALL RETROREFLECTIVE BACK PLATES TO IMPROVE SIGNAL HEAD VISIBILITY

**LONG TERM:**  
 -INSTALL SIDEWALK

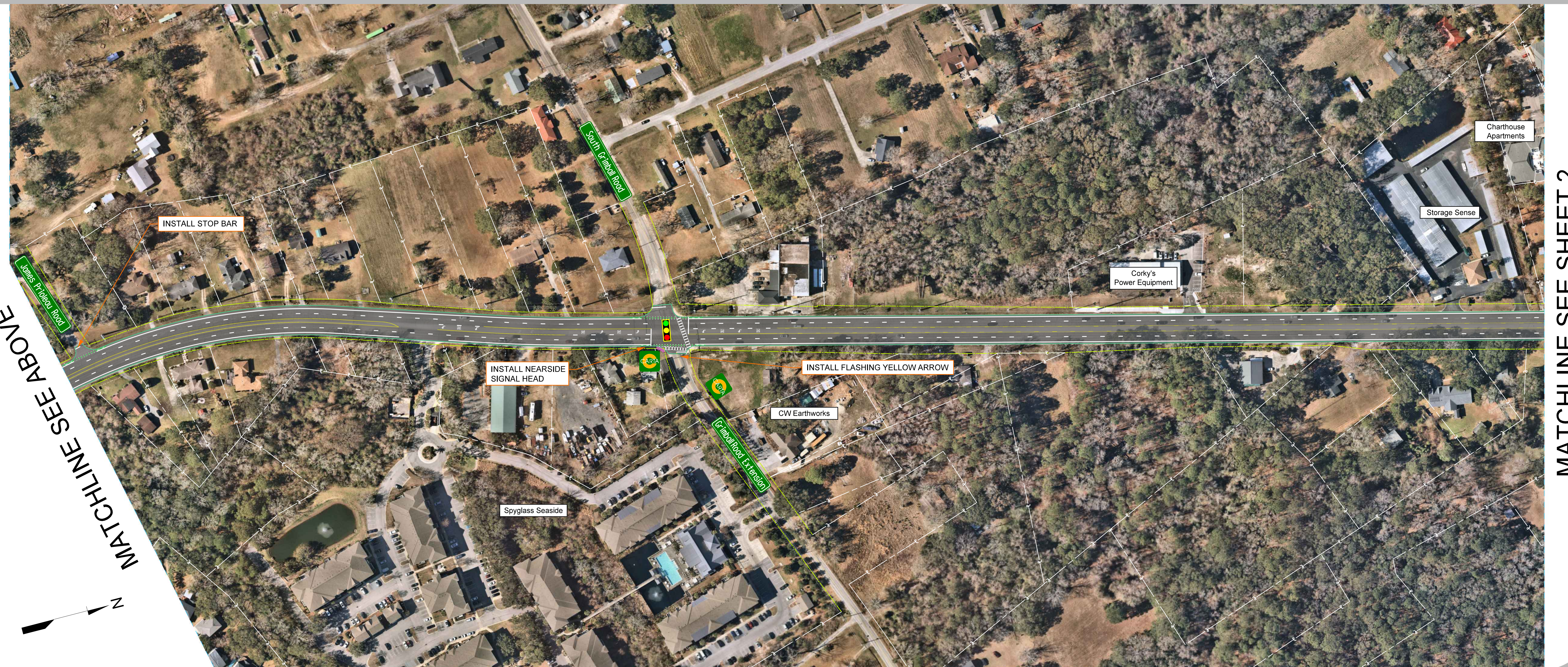
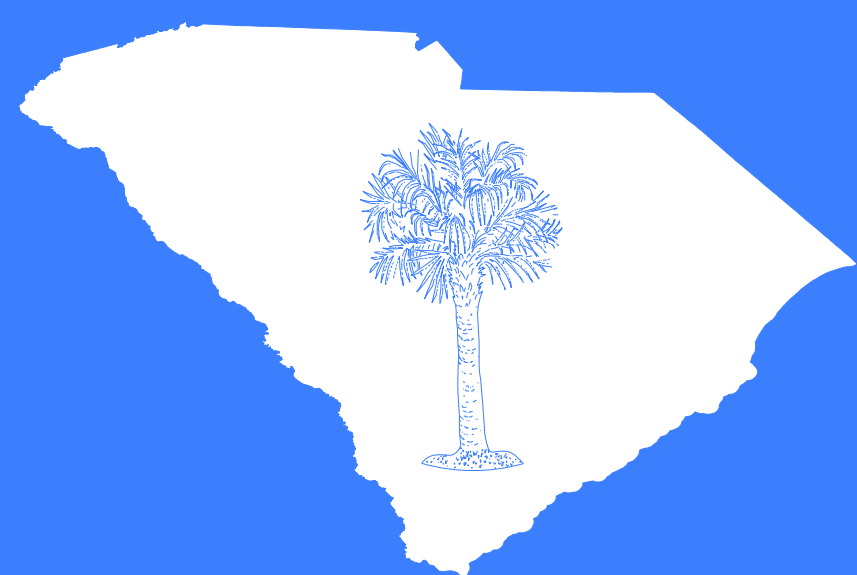


### Contact Information

Questions/comments may be sent to:  
 Shawn Salley, SCDOT Traffic Safety Program Manager  
 Phone: 803-723-4843  
 Email: [salleyse@scdot.org](mailto:salleyse@scdot.org)  
 Project Website:  
<https://scdotgis.online/SC171safety>

### Disclaimer

These displays are meant to show concepts for planning purposes only and are subject to change.



### Map Legend

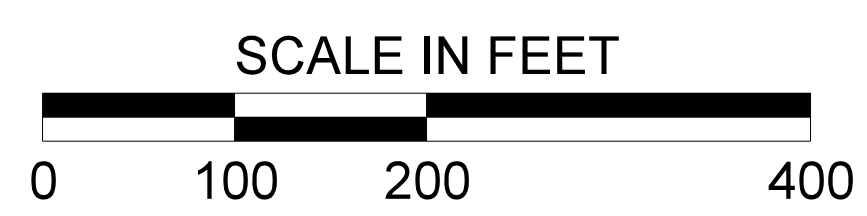
- ROADWAY PAVEMENT
- PAVEMENT REMOVAL
- EXISTING CONCRETE MEDIAN
- PROPOSED MEDIAN
- PROPOSED CONCRETE ISLAND
- PROPOSED SIDEWALK
- CHARLESTON COUNTY BIKE/PEDESTRIAN IMPROVEMENT PROJECT
- EXISTING RIGHT OF WAY
- PROPOSED RIGHT OF WAY
- EXISTING PROPERTY LINE
- EXISTING SIGNAL
- CARTA BUS STOP LOCATION

### Improvements Timeline

- SHORT TERM:**
- UPDATE ALL CROSSWALKS TO HIGH VISIBILITY
  - UPGRADE PAVEMENT MARKINGS
  - CLEAN AND MAINTAIN BIKE LANES
  - TRIM OVERGROWN VEGETATION AND REMOVE SEDIMENT BUILDUP FROM SIDEWALKS
  - REVIEW YELLOW CLEARANCE INTERVALS AT SIGNALIZED INTERSECTIONS

- MEDIUM TERM:**
- RECONSTRUCT RAMPS/CURBS TO BE ADA COMPLIANT
  - INSTALL RAISED MEDIAN AND U-TURN BULBS
  - INSTALL FLASHING YELLOW ARROWS, LEADING PEDESTRIAN INTERVALS, AND NEARSIDE SIGNAL HEADS, AT SELECT INTERSECTIONS
  - CONVERT LANE ORIENTATION AT SELECT INTERSECTIONS
  - EVALUATE PEDESTRIAN CROSSWALK CROSSING TIMES AND PEDESTRIAN SIGNAL HEAD SIGHT DISTANCE
  - EVALUATE TRANSIT STOPS
  - INSTALL RETROREFLECTIVE BACK PLATES TO IMPROVE SIGNAL HEAD VISIBILITY

- LONG TERM:**
- INSTALL SIDEWALK

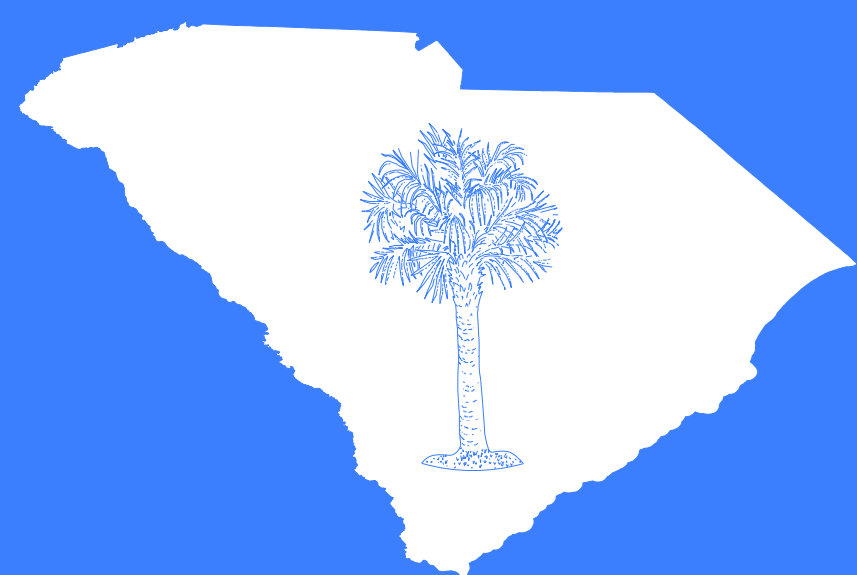


### Contact Information

Questions/comments may be sent to:  
 Shawn Salley, SCDOT Traffic Safety Program Manager  
 Phone: 803-723-4843  
 Email: [salleyse@scdot.org](mailto:salleyse@scdot.org)  
 Project Website:  
<https://scdotgis.online/SC171safety>

### Disclaimer

These displays are meant to show concepts for planning purposes only and are subject to change.



### Map Legend

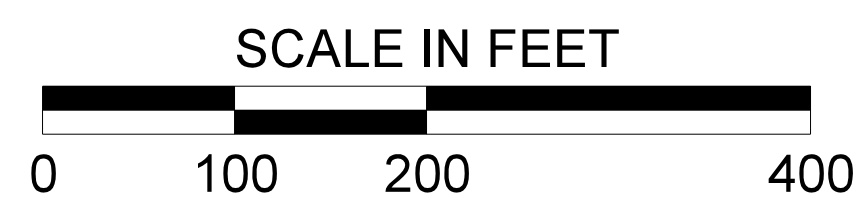
- ROADWAY PAVEMENT
- PAVEMENT REMOVAL
- EXISTING CONCRETE MEDIAN
- PROPOSED MEDIAN
- PROPOSED CONCRETE ISLAND
- PROPOSED SIDEWALK
- CHARLESTON COUNTY BIKE/PED IMPROVEMENT PROJECT
- EXISTING RIGHT OF WAY
- PROPOSED RIGHT OF WAY
- EXISTING PROPERTY LINE
- EXISTING SIGNAL
- CARTA BUS STOP LOCATION

### Improvements Timeline

**SHORT TERM:**  
 -UPDATE ALL CROSSWALKS TO HIGH VISIBILITY  
 -UPGRADE PAVEMENT MARKINGS  
 -CLEAN AND MAINTAIN BIKE LANES  
 -TRIM OVERGROWN VEGETATION AND REMOVE SEDIMENT BUILDUP FROM SIDEWALKS  
 -REVIEW YELLOW CLEARANCE INTERVALS AT SIGNALIZED INTERSECTIONS

**MEDIUM TERM:**  
 -RECONSTRUCT RAMPS/CURBS TO BE ADA COMPLIANT  
 -INSTALL RAISED MEDIAN AND U-TURN BULBS  
 -INSTALL FLASHING YELLOW ARROWS, LEADING PEDESTRIAN INTERVALS, AND NEARSIDE SIGNAL HEADS, AT SELECT INTERSECTIONS  
 -CONVERT LANE ORIENTATION AT SELECT INTERSECTIONS  
 -EVALUATE PEDESTRIAN CROSSWALK CROSSING TIMES AND PEDESTRIAN SIGNAL HEAD SIGHT DISTANCE  
 -EVALUATE TRANSIT STOPS  
 -INSTALL RETROREFLECTIVE BACK PLATES TO IMPROVE SIGNAL HEAD VISIBILITY

**LONG TERM:**  
 -INSTALL SIDEWALK

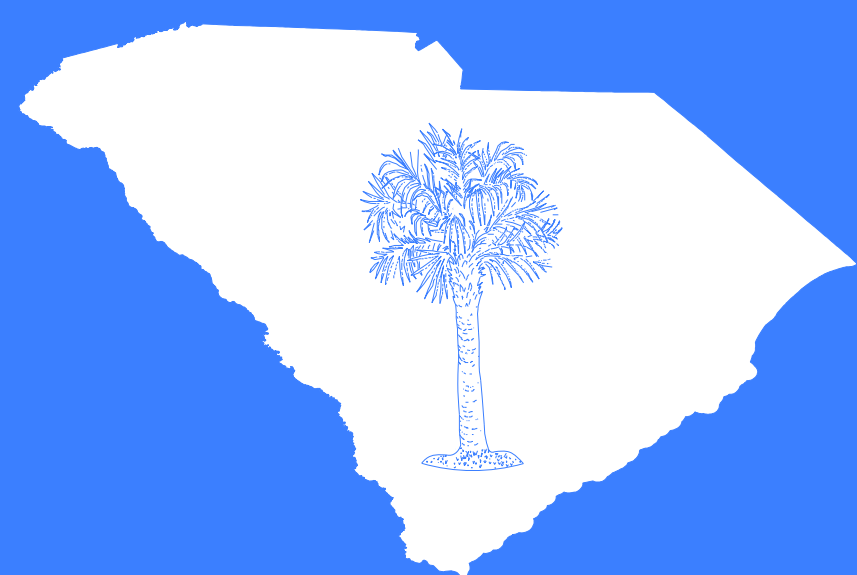


### Contact Information

Questions/comments may be sent to:  
 Shawn Salley, SCDOT Traffic Safety Program Manager  
 Phone: 803-723-4843  
 Email: [salleyse@scdot.org](mailto:salleyse@scdot.org)  
 Project Website:  
<https://scdotgis.online/SC171safety>

### Disclaimer

These displays are meant to show concepts for planning purposes only and are subject to change.



### Map Legend

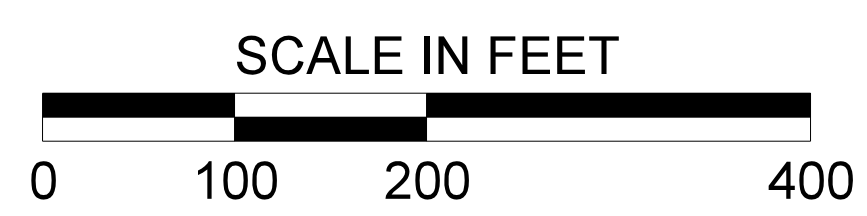
- ROADWAY PAVEMENT
- PAVEMENT REMOVAL
- EXISTING CONCRETE MEDIAN
- PROPOSED MEDIAN
- PROPOSED CONCRETE ISLAND
- PROPOSED SIDEWALK
- CHARLESTON COUNTY BIKE/PEDESTRIAN IMPROVEMENT PROJECT
- EXISTING RIGHT OF WAY
- PROPOSED RIGHT OF WAY
- EXISTING PROPERTY LINE
- EXISTING SIGNAL
- CARTA BUS STOP LOCATION

### Improvements Timeline

**SHORT TERM:**  
 -UPDATE ALL CROSSWALKS TO HIGH VISIBILITY  
 -UPGRADE PAVEMENT MARKINGS  
 -CLEAN AND MAINTAIN BIKE LANES  
 -TRIM OVERGROWN VEGETATION AND REMOVE SEDIMENT BUILDUP FROM SIDEWALKS  
 -REVIEW YELLOW CLEARANCE INTERVALS AT SIGNALIZED INTERSECTIONS

**MEDIUM TERM:**  
 -RECONSTRUCT RAMPS/CURBS TO BE ADA COMPLIANT  
 -INSTALL RAISED MEDIAN AND U-TURN BULBS  
 -INSTALL FLASHING YELLOW ARROWS, LEADING PEDESTRIAN INTERVALS, AND NEARSIDE SIGNAL HEADS, AT SELECT INTERSECTIONS  
 -CONVERT LANE ORIENTATION AT SELECT INTERSECTIONS  
 -EVALUATE PEDESTRIAN CROSSWALK CROSSING TIMES AND PEDESTRIAN SIGNAL HEAD SIGHT DISTANCE  
 -EVALUATE TRANSIT STOPS  
 -INSTALL RETROREFLECTIVE BACK PLATES TO IMPROVE SIGNAL HEAD VISIBILITY

**LONG TERM:**  
 -INSTALL SIDEWALK

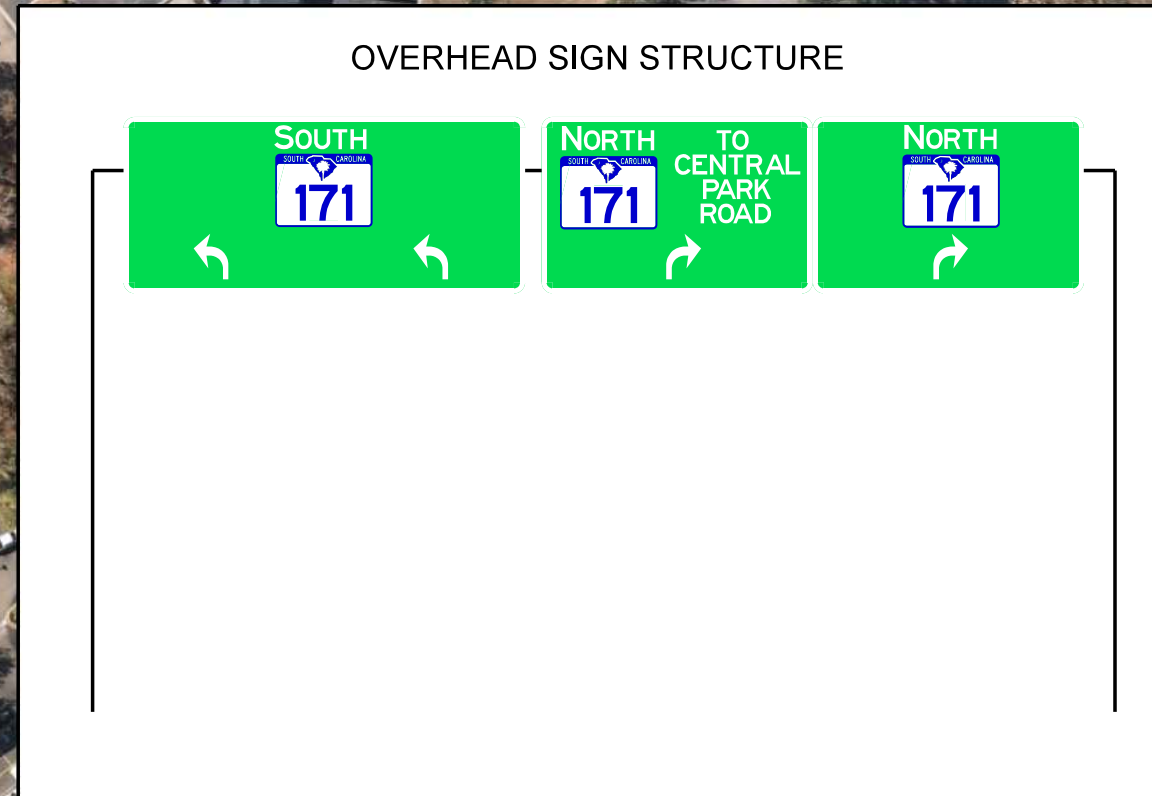
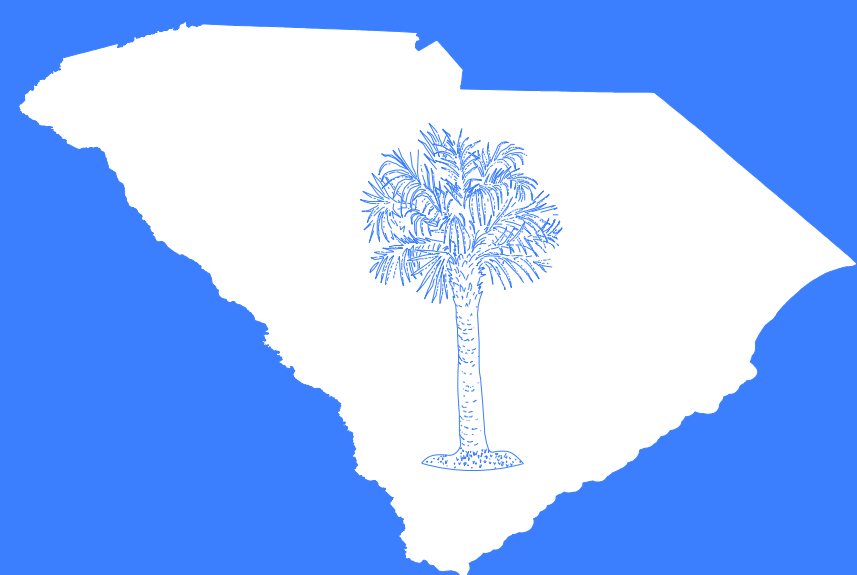


### Contact Information

Questions/comments may be sent to:  
 Shawn Salley, SCDOT Traffic Safety Program Manager  
 Phone: 803-723-4843  
 Email: [salleyse@scdot.org](mailto:salleyse@scdot.org)  
 Project Website:  
<https://scdotgis.online/SC171safety>

### Disclaimer

These displays are meant to show concepts for planning purposes only and are subject to change.



### Map Legend

- ROADWAY PAVEMENT
- PAVEMENT REMOVAL
- EXISTING CONCRETE MEDIAN
- PROPOSED MEDIAN
- PROPOSED CONCRETE ISLAND
- PROPOSED SIDEWALK
- CHARLESTON COUNTY BIKE/PED IMPROVEMENT PROJECT
- EXISTING RIGHT OF WAY
- PROPOSED RIGHT OF WAY
- EXISTING PROPERTY LINE
- EXISTING SIGNAL
- CARTA BUS STOP LOCATION

### Improvements Timeline

**SHORT TERM:**  
 -UPDATE ALL CROSSWALKS TO HIGH VISIBILITY  
 -UPGRADE PAVEMENT MARKINGS  
 -CLEAN AND MAINTAIN BIKE LANES  
 -TRIM OVERGROWN VEGETATION AND REMOVE SEDIMENT BUILDUP FROM SIDEWALKS  
 -REVIEW YELLOW CLEARANCE INTERVALS AT SIGNALIZED INTERSECTIONS

**MEDIUM TERM:**  
 -RECONSTRUCT RAMPS/CURBS TO BE ADA COMPLIANT  
 -INSTALL RAISED MEDIAN AND U-TURN BULBS  
 -INSTALL FLASHING YELLOW ARROWS, LEADING PEDESTRIAN INTERVALS, AND NEARSIDE SIGNAL HEADS, AT SELECT INTERSECTIONS  
 -CONVERT LANE ORIENTATION AT SELECT INTERSECTIONS  
 -EVALUATE PEDESTRIAN CROSSWALK CROSSING TIMES AND PEDESTRIAN SIGNAL HEAD SIGHT DISTANCE  
 -EVALUATE TRANSIT STOPS  
 -INSTALL RETROREFLECTIVE BACK PLATES TO IMPROVE SIGNAL HEAD VISIBILITY

**LONG TERM:**  
 -INSTALL SIDEWALK



### Contact Information

Questions/comments may be sent to:  
 Shawn Salley, SCDOT Traffic Safety Program Manager  
 Phone: 803-723-4843  
 Email: [salleyse@scdot.org](mailto:salleyse@scdot.org)  
 Project Website:  
<https://scdotgis.online/SC171safety>

### Disclaimer

These displays are meant to show concepts for planning purposes only and are subject to change.



MATCHLINE SEE SHEET 4