

# WELCOME

## US 176 (RIVER DRIVE) BRIDGE REPLACEMENT

PUBLIC  
INFORMATION  
MEETING



South Carolina Department of Transportation

## PROJECT PURPOSE

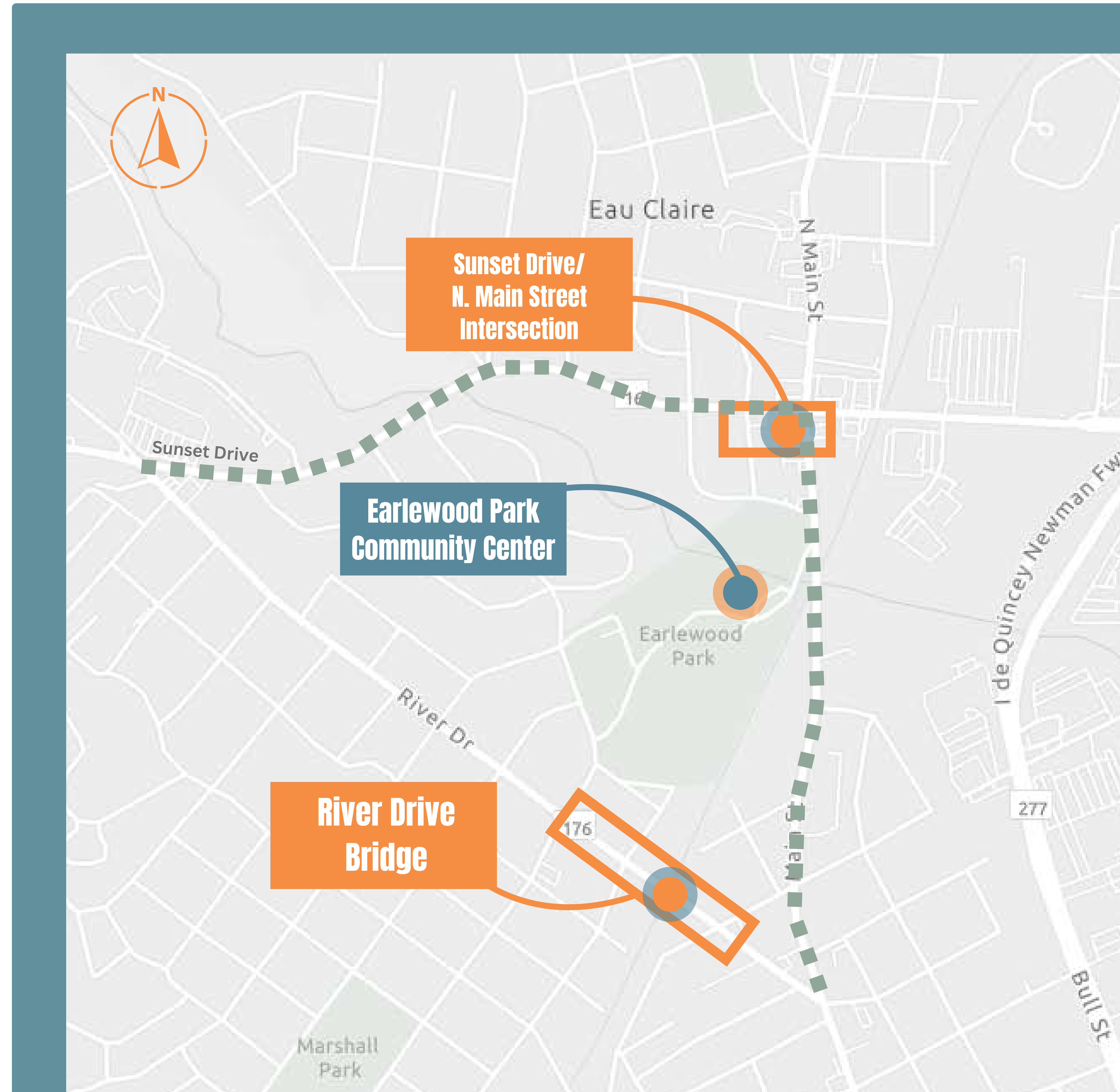
The **purpose** of the project is to correct **structural deficiencies\*** on the US 176 (River Drive) bridge over the CSX Railroad and upgrade the roadway to meet current **design and safety standards**.

\* Structurally deficient means that the bridge has one or more structural defects that require attention. **It does not mean the bridge is unsafe for traffic.**

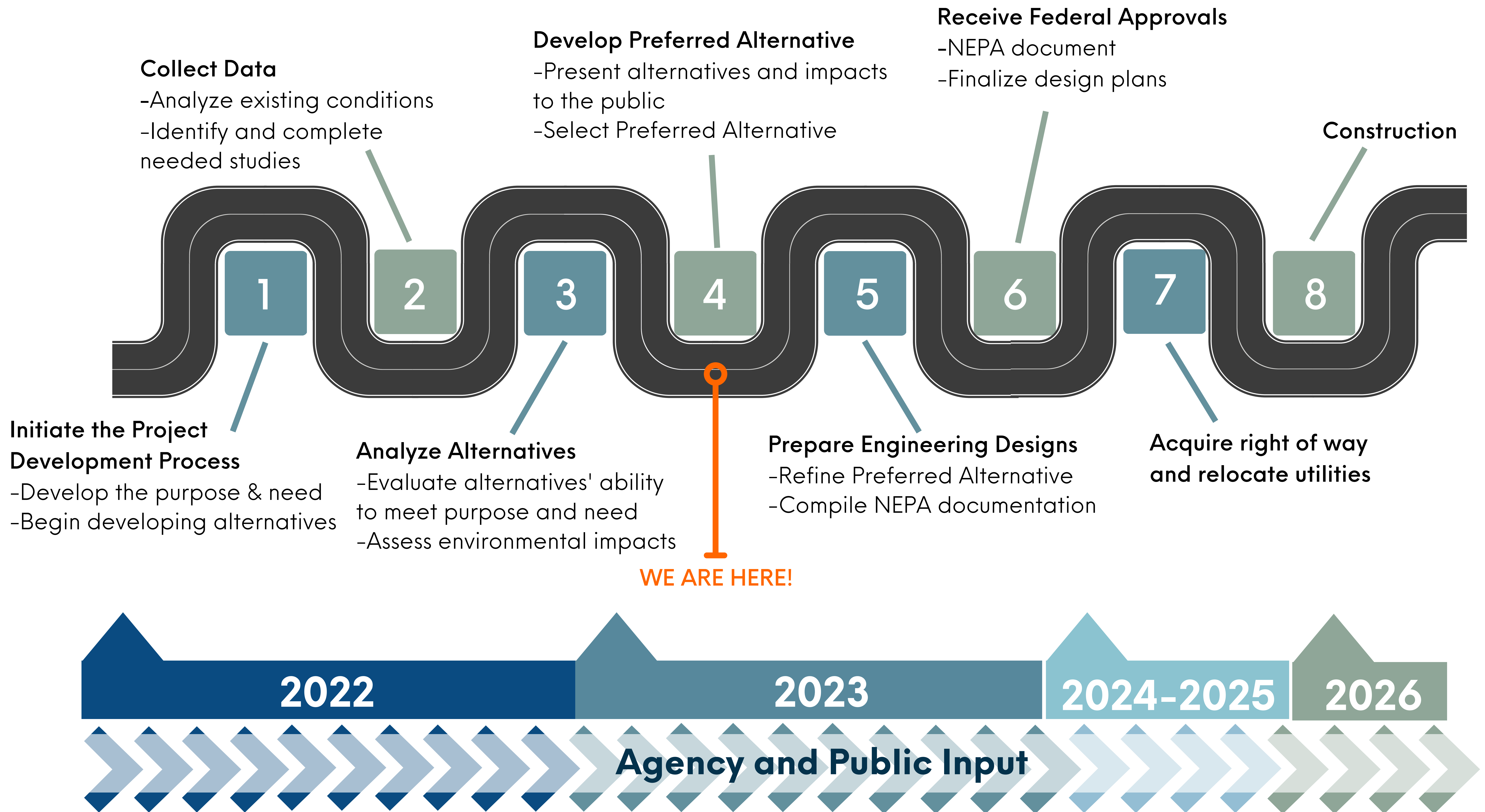
## DETOUR ROUTE

The signed **detour route** would use Sunset Drive (SC 16) and N. Main Street (US 21). Improvements to the Sunset Drive/N. Main Street intersection would be made to accommodate detoured traffic during construction.

Total detour length = 1.5 miles / Net increase = 0.5 mile



# PROJECT DEVELOPMENT PROCESS



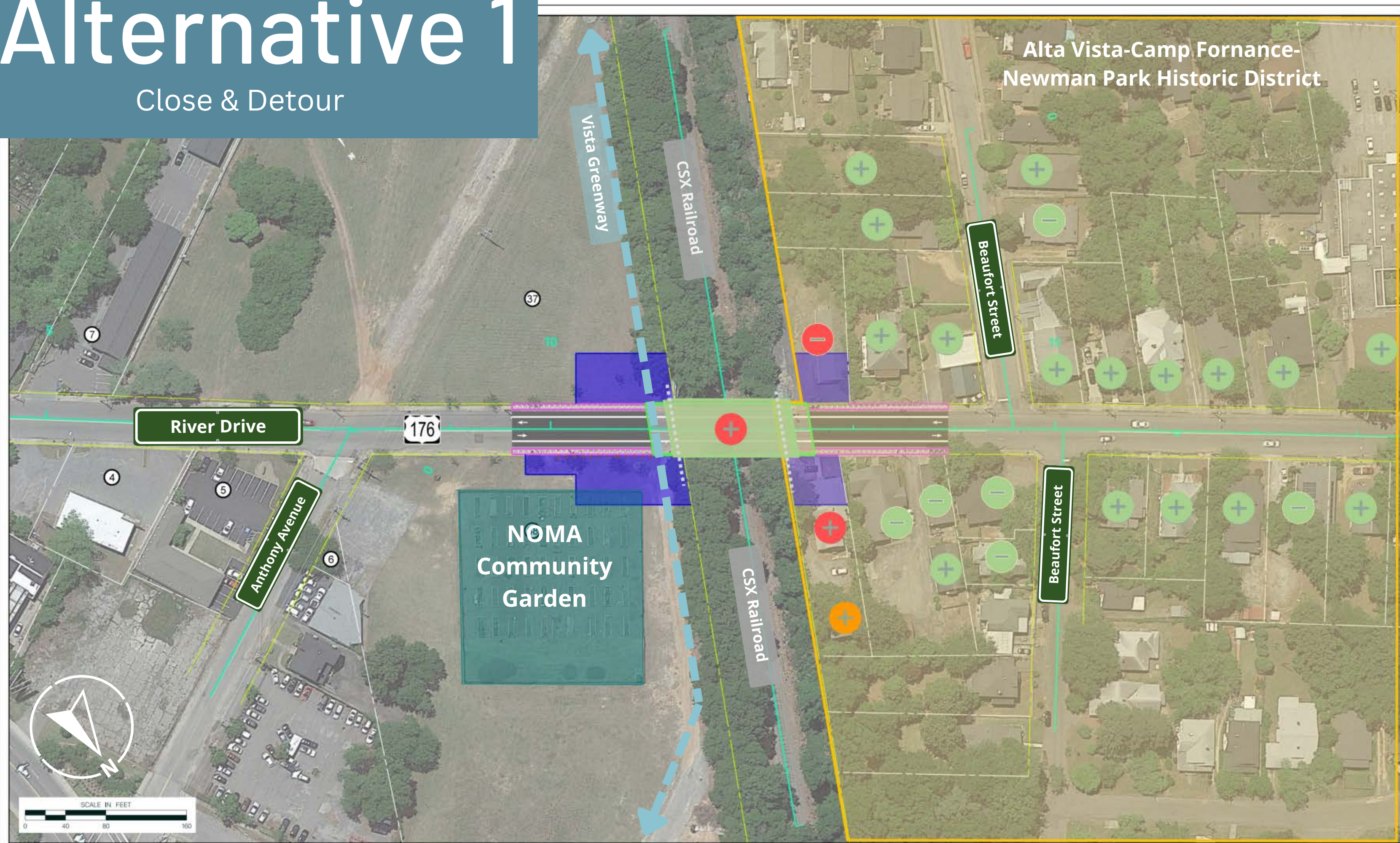
## ALTERNATIVES CONSIDERED

**Alta Vista-Camp Fornance-Newman Park Historic District**

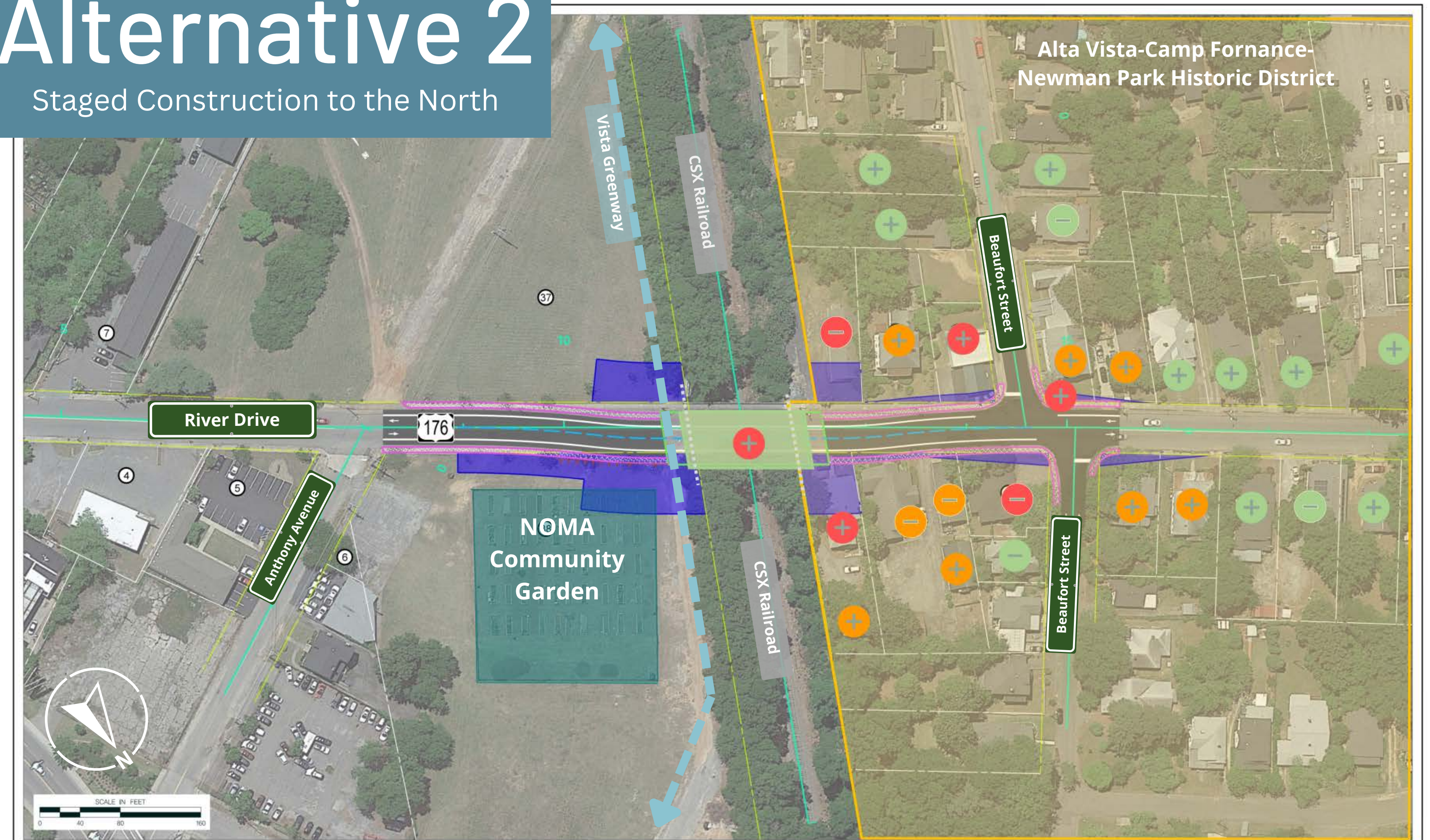
—	+	●	●	●
Non-Contributing Resource	Contributing Resource	No Use of Property	Permanent Use of Property	Permanent Use of Structure
■ New Right of Way				

### RECOMMENDED

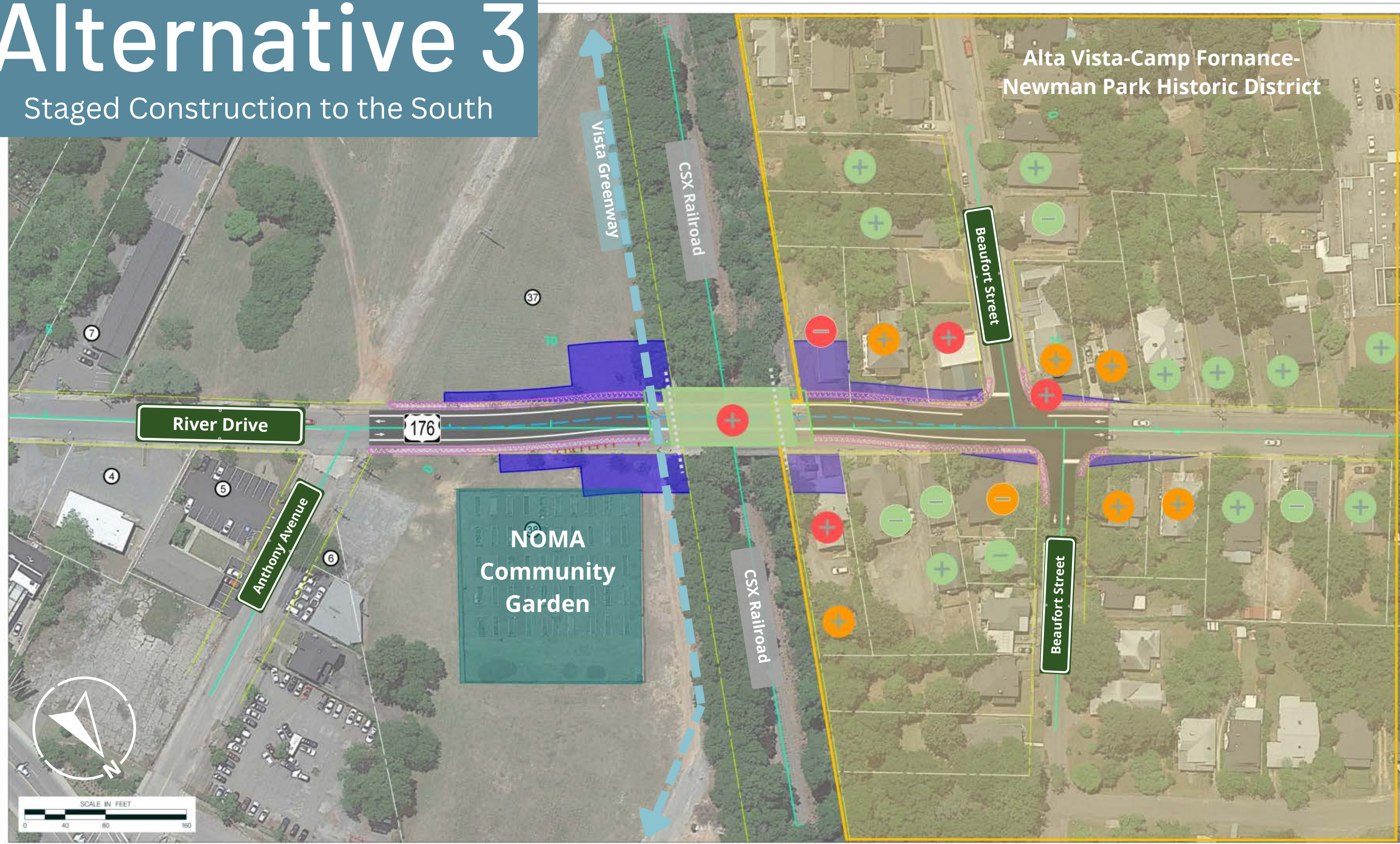
**Alternative 1**  
Close & Detour



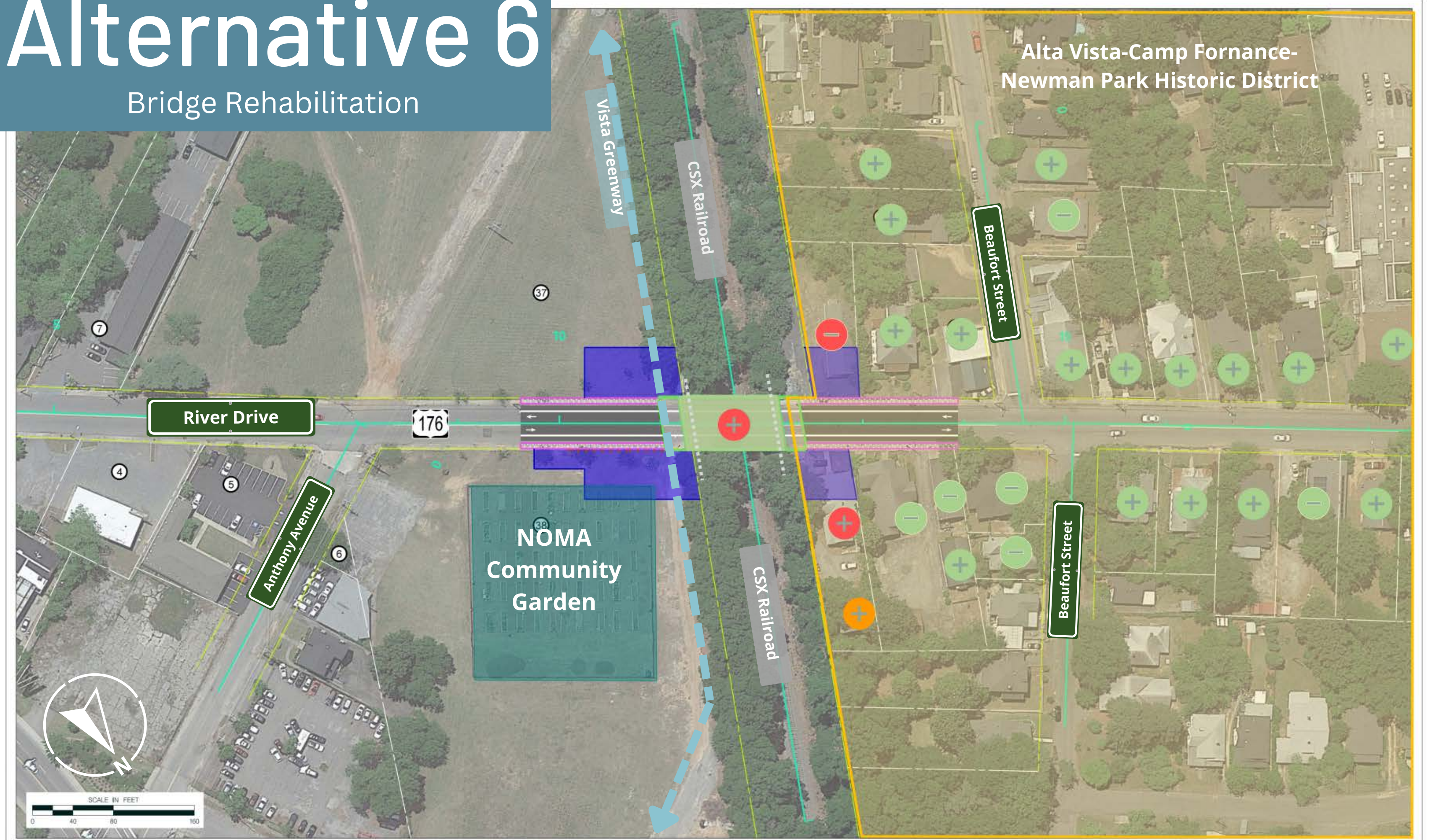
**Alternative 2**  
Staged Construction to the North










**Alternative 3**  
Staged Construction to the South



**Alternative 6**  
Bridge Rehabilitation



## POTENTIAL IMPACTS

EVALUATION CRITERIA	ALTERNATIVE 1 CLOSE & DETOUR	ALTERNATIVE 2 STAGE NORTH	ALTERNATIVE 3 STAGE SOUTH	ALTERNATIVE 6 REHABILITATION
 <b>ROW (ACRES)</b>	0.38	0.51	0.50	0.38
 <b>HISTORIC RESOURCES IMPACTED</b>	2	10	9	2
 <b>POTENTIAL DISPLACEMENTS</b>	2	4	3	2
 <b>NOMA GARDEN IMPACT</b>	YES	YES	NO	YES
 <b>CONSTRUCTION DURATION</b>	12 MONTHS	24 MONTHS	24 MONTHS	12 MONTHS
 <b>LIFESPAN</b>	75 YEARS	75 YEARS	75 YEARS	25 YEARS
 <b>COST</b>	LOWEST	HIGH	HIGH	HIGHEST

**RECOMMENDED**

## SECTION 4(F)

### DEPARTMENT OF TRANSPORTATION ACT OF 1966

#### What are Section 4(f) properties?

- Public parks, recreation areas, and wildlife or waterfowl refuges
- Historic sites listed or eligible for listing on the National Register of Historic Places

#### How are Section 4(f) properties protected?

Section 4(f) requires a substantive review of whether there is a transportation project-related **use** of a Section 4(f) property. The use can only be approved if:

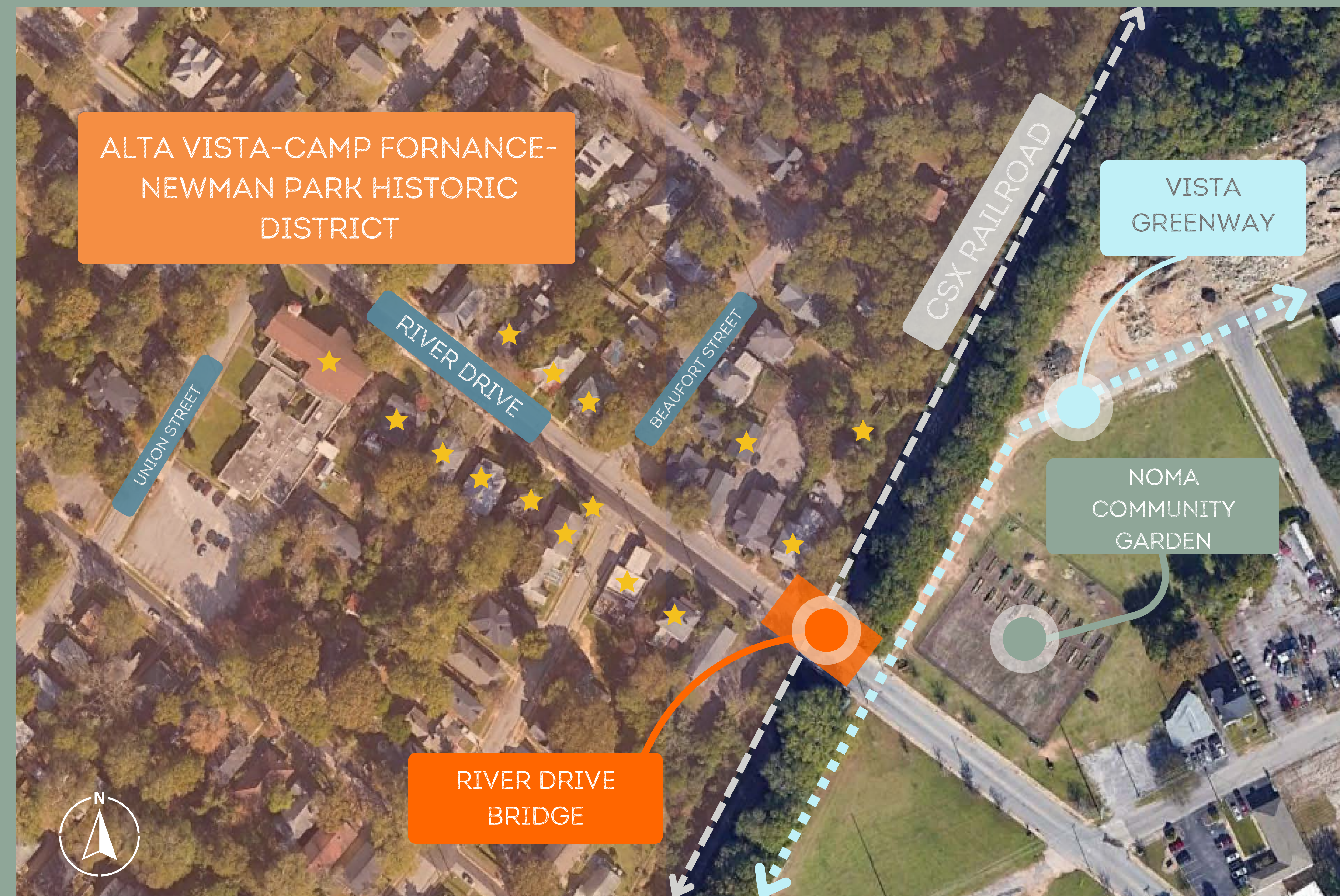
- there is **no feasible and prudent alternative** to using the Section 4(f) property and all possible planning to minimize harm has been incorporated **AND**
- the selected alternative has the **least overall harm** to the resource **OR**
- the use will have a **de minimis** (negligible) impact on the property, as agreed to by the agency with jurisdiction over the resource

#### What are the impacts of the Recommended Alternative?

- NOMA Community Garden - **de minimis** impact
- Vista Greenway - **de minimis** impact
- Historic District - **least overall harm**
- River Drive Bridge - only **feasible and prudent alternative**

#### This project contains Section 4(f) properties:

- NOMA Community Garden
- Vista Greenway (proposed)
- Alta Vista-Camp Fornance-Newman Park Historic District (including contributing properties ★)
- River Drive Bridge over CSX Railroad



## CONTACT US



Fill out a comment form and leave it in the comment box



Email the Project Manager at [LedbetteDL@scdot.org](mailto:LedbetteDL@scdot.org)



SCDOT  
ATTN: Darren Ledbetter  
P.O. Box 191  
955 Park Street  
Columbia, SC 29201



Call the Project Manager at (803) 737-0172



Fill out an online form on the project website:  
[scdotgis.online/US176RiverDrive](http://scdotgis.online/US176RiverDrive)  
(Note: Not Compatible with Internet Explorer)